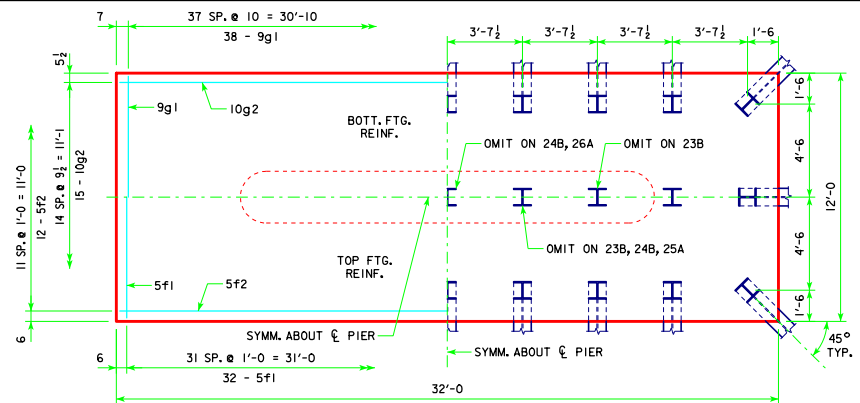
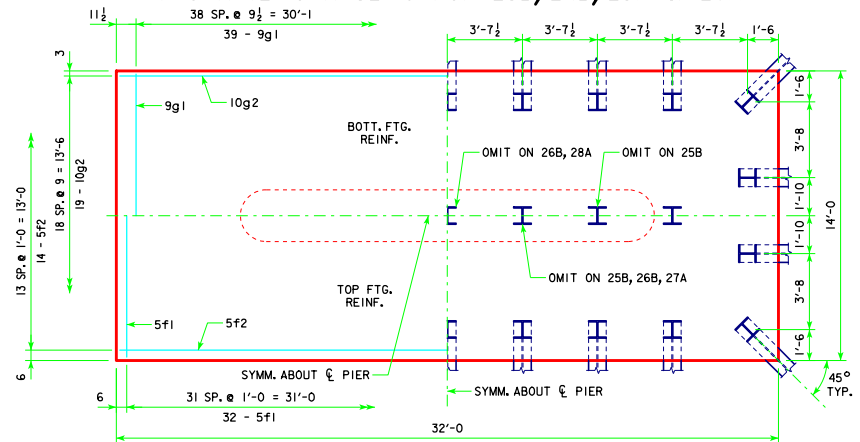


4'-0 x 11'-0 x 30'-0 FOR 21B, 22A, 23A & 24A



4'-0 x 12'-0 x 32'-0 FOR 23B, 24B, 25A & 26A



4'-0 x 14'-0 x 32'-0 FOR 25B, 26B, 27A & 28A

NOTE:  
SEE SHEET RS40-128-14 FOR FOOTING NOTES.

LATEST REVISION DATE	<i>Thomas E. McQuinn</i> APPROVED BY BRIDGE ENGINEER	<b>IOWADOT</b> Highway Division
		STANDARD DESIGN - 40' ROADWAY, 3 SPAN BRIDGES <b>ROLLED STEEL BEAM BRIDGES</b> OCTOBER, 2014
TEE PIER-HPI0x57 SRL-1 STEEL PILE FOOTINGS 10° SKEW - SHEET 3		<b>RS40-130-14</b>