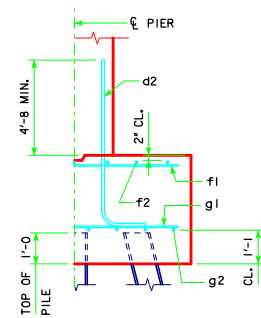
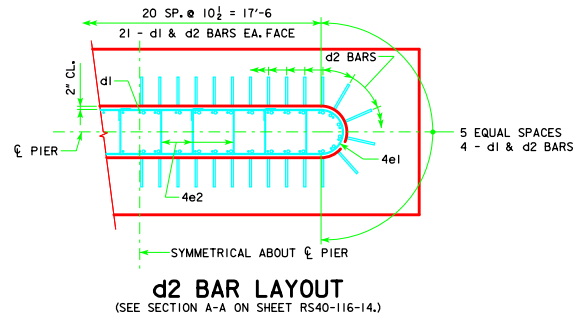


H IN FT.	CL - CL ABUT. BRG.	PILING (HP10x57)		FOOTING SIZE
		NO. & LAYOUT	① LRFD P _u , STRENGTH I, DES. LOAD (KIPS)	
16 TO 18	160'-0	15A	146	4' x 9' x 24'
	180'-0	16A	146	
	200'-0	18A	142	
	220'-0	18E	145	
	240'-0	20A	142	
	260'-0	20B	145	
	280'-0	22A	144	
	300'-0	23B	144	
	320'-0	24B	146	
	340'-0	25A	144	
19 TO 21	160'-0	16A	141	4' x 9' x 24'
	180'-0	17A	145	
	200'-0	18D	143	
	220'-0	18E	145	
	240'-0	20A	145	
	260'-0	21B	143	
	280'-0	23A	143	
	300'-0	23B	146	
	320'-0	25A	144	
	340'-0	26A	147	
22 TO 24	160'-0	16B	143	4' x 10' x 24'
	180'-0	18B	142	
	200'-0	18D	146	
	220'-0	19A	144	
	240'-0	20B	141	
	260'-0	21B	146	
	280'-0	23A	145	
	300'-0	24B	143	
	320'-0	25A	147	
	340'-0	26B	142	
25 TO 27	160'-0	16C	144	4' x 10' x 26'
	180'-0	18C	142	
	200'-0	18E	141	
	220'-0	19A	146	
	240'-0	20B	144	
	260'-0	22A	142	
	280'-0	24A	143	
	300'-0	24B	145	
	320'-0	26A	144	
	340'-0	26B	144	
28 TO 30	160'-0	17B	142	4' x 10' x 26'
	180'-0	18C	145	
	200'-0	18E	144	
	220'-0	20A	143	
	240'-0	20B	146	
	260'-0	22A	144	
	280'-0	24A	145	
	300'-0	25A	143	
	320'-0	26A	146	
	340'-0	26B	145	
31 TO 33	160'-0	17C	143	4' x 11' x 26'
	180'-0	18D	146	
	200'-0	18E	146	
	220'-0	20A	145	
	240'-0	21B	143	
	260'-0	22A	146	
	280'-0	24B	140	
	300'-0	25A	144	
	320'-0	26B	141	
	340'-0	27A	143	
34 TO 36	160'-0	17D	141	4' x 11' x 28'
	180'-0	18E	141	
	200'-0	19A	144	
	220'-0	21A	143	
	240'-0	21B	145	
	260'-0	23A	144	
	280'-0	24B	142	
	300'-0	25A	146	
	320'-0	26B	142	
	340'-0	27A	144	

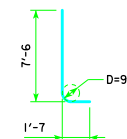
H IN FT.	CL - CL ABUT. BRG.	PILING (HP10x57)		FOOTING SIZE
		NO. & LAYOUT	① LRFD P _u , STRENGTH I, DES. LOAD (KIPS)	
37 TO 40	160'-0	18E	136	4' x 11' x 28'
	180'-0	18E	144	
	200'-0	20A	141	
	220'-0	21A	146	
	240'-0	22A	142	
	260'-0	23A	146	
	280'-0	24B	144	
	300'-0	26A	143	
	320'-0	26B	144	
	340'-0	27A	146	

FOOTING SIZE	REINFORCING STEEL (ONE FOOTING)			TOTAL WEIGHT (L.B.)	STRUCTURAL CONCRETE (CY)	
	BAR NO., SIZE & SPACING	LENGTH	WEIGHT (L.B.)			
4' x 9' x 24'	d2	50 - #9 AS SHOWN	9'-1	1544	2694	32.0
	f1	24 - #5 @ 1'-0	8'-8	217		
	f2	9 - #5 @ 1'-0	23'-8	222		
	g1	30 - #6 @ 0'-9 1/2	8'-8	391		
	g2	9 - #6 @ 1'-0	23'-8	320		
	d2	50 - #9 AS SHOWN	9'-1	1544		
4' x 10' x 24'	f1	24 - #5 @ 1'-0	9'-8	242	2941	35.6
	f2	10 - #5 @ 1'-0	23'-8	247		
	g1	28 - #7 @ 0'-10	9'-8	553		
	g2	10 - #6 @ 1'-0	23'-8	355		
	d2	50 - #9 AS SHOWN	9'-1	1544		
	f1	26 - #5 @ 1'-0	9'-8	262		
4' x 10' x 26'	f2	10 - #5 @ 1'-0	25'-8	268	3309	38.5
	g1	28 - #7 @ 0'-11	9'-8	553		
	g2	13 - #7 @ 0'-9 1/2	25'-8	682		
	d2	50 - #9 AS SHOWN	9'-1	1544		
	f1	26 - #5 @ 1'-0	10'-8	289		
	f2	11 - #5 @ 1'-0	25'-8	294		
4' x 11' x 28'	g1	27 - #8 @ 0'-11 1/2	10'-8	769	4164	45.6
	g2	13 - #7 @ 0'-10 1/2	25'-8	682		
	d2	50 - #9 AS SHOWN	9'-1	1544		
	f1	28 - #5 @ 1'-0	10'-8	312		
	f2	11 - #5 @ 1'-0	27'-8	317		
	g1	31 - #8 @ 0'-11	10'-8	883		
4' x 12' x 30'	g2	15 - #8 @ 0'-9	27'-8	1108	5142	53.3
	d2	50 - #9 AS SHOWN	9'-1	1544		
	f1	30 - #5 @ 1'-0	11'-8	365		
	f2	12 - #5 @ 1'-0	29'-8	371		
	g1	34 - #9 @ 0'-10 1/2	11'-8	1349		
	g2	15 - #9 @ 0'-9 1/2	29'-8	1513		
4' x 12' x 32'	d2	50 - #9 AS SHOWN	9'-1	1544	5880	56.9
	f1	32 - #5 @ 1'-0	11'-8	389		
	f2	12 - #5 @ 1'-0	31'-8	396		
	g1	38 - #9 @ 0'-10	11'-8	1507		
	g2	15 - #10 @ 0'-9 1/2	31'-8	2044		
	d2	50 - #9 AS SHOWN	9'-1	1544		
4' x 14' x 32'	f1	32 - #5 @ 1'-0	13'-8	456	6681	66.4
	f2	14 - #5 @ 1'-0	31'-8	462		
	g1	38 - #9 @ 0'-10	13'-8	1766		
	g2	18 - #10 @ 0'-9 1/2	31'-8	2453		

① NOTE: P_u, STRENGTH I DESIGN LOAD (KIPS) IS NOT THE VALUE USED IN THE FIELD FOR DRIVING PILES.



TYPICAL SECTION



d2

NOTE: D = PIN DIAMETER. DIMENSIONS ARE OUT TO OUT.

NOTE: THE REINFORCING STEEL QUANTITY IS TO BE INCLUDED ON THE SUMMARY QUANTITIES SHEET IN THE PLAN.

NOTE: THE CONCRETE QUANTITY IS TO BE INCLUDED ON THE SUMMARY QUANTITIES SHEET IN THE PLAN.

NOTE: THE PILE TYPE IS TO BE INCLUDED ON THE SUMMARY QUANTITIES SHEET IN THE PLAN.

FOOTING NOTES:

THESE FOOTINGS ARE DESIGNED AND DETAILED TO BE USED WITH THE CAP AND COLUMN DETAILS OF THE TEE PIERS AS SHOWN ON SHEET RS40-116-14.

BATTER PILES IN EXTERIOR ROWS 1:4 IN THE DIRECTION SHOWN.

STEEL PILING USED AS POINT BEARING SHALL HAVE A MINIMUM DISTANCE OF APPROXIMATELY 10 FEET FROM BOTTOM OF FOOTING TO TOP OF BEARING ROCK. THE PILE LAYOUTS ARE SUCH THAT THE DISTANCE CENTER TO CENTER OF ADJACENT PILING SHALL NOT EXCEED 8'-0.

PIER PILES SHALL BE DRIVEN TO VALUES SHOWN IN DESIGN PLANS.

LATEST REVISION DATE	 APPROVED BY BRIDGE ENGINEER	 STANDARD DESIGN - 40' ROADWAY, 3 SPAN BRIDGES ROLLED STEEL BEAM BRIDGES OCTOBER, 2014	TEE PIER-HP10x57 SRL-1 STEEL PILE FOOTINGS	RS40-118-14 0° SKEW - SHEET 1