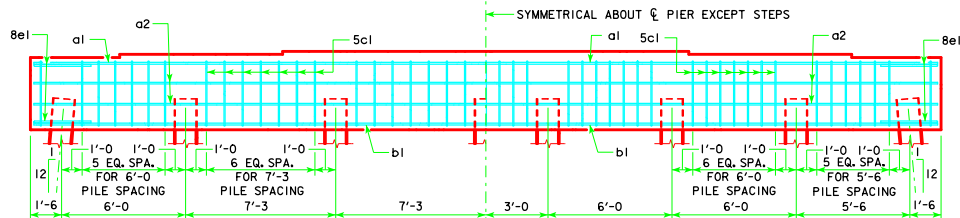
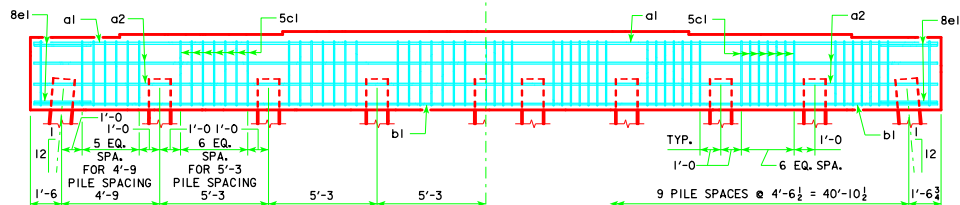


TYPICAL PLAN

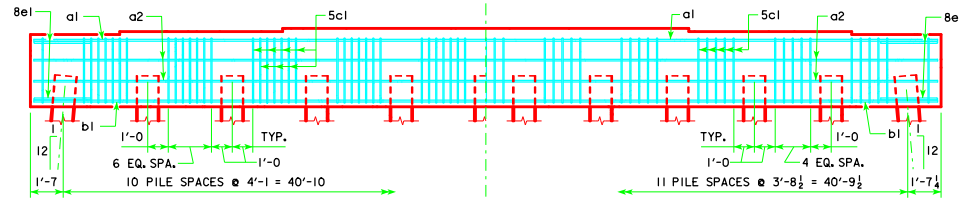
NOTE:
 THE HEIGHT OF THE STEPS ON THE BRIDGE SEAT IS EQUAL TO THE DIFFERENCE IN ELEVATIONS OF THE TOP OF SLAB AT ADJACENT BEAMS ALONG \bar{C} PIER.
 ANCHOR BOLTS REQUIRED FOR FIXED PIER BEARINGS ONLY. FOR BOLT AND BEARING SIZES, SEE RS40-093-14, RS40-094-14 OR RS40-095-14.



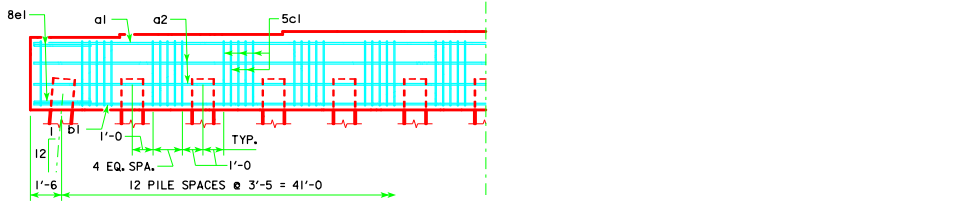
7 PILE BENT



9 PILE BENT



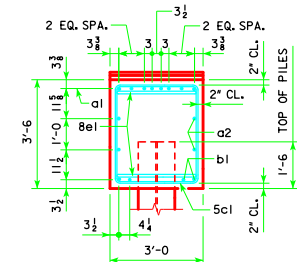
11 PILE BENT



13 PILE BENT

8 PILE BENT

10 PILE BENT



VIEW A-A

FOR 7, 8, 9, 10, 11, 12 & 13 PILE BENTS

LATEST REVISION DATE APPROVED BY BRIDGE ENGINEER <i>Thomas E. Mc Donnell</i>	
	STANDARD DESIGN - 40' ROADWAY, 3 SPAN BRIDGES ROLLED STEEL BEAM BRIDGES OCTOBER, 2014
	PILE BENT PIERS HPI4 PILES 20° SKEW
RS40-106-14	