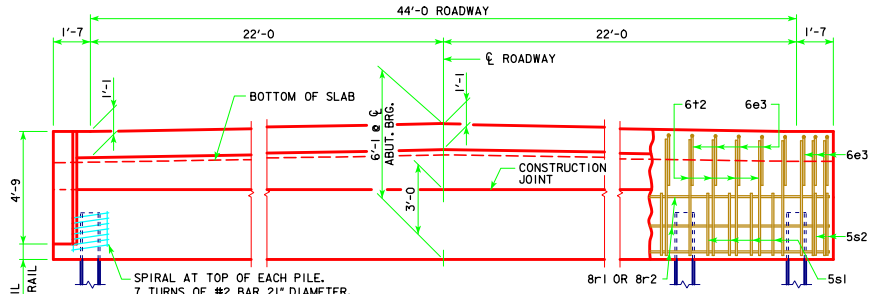


PLAN VIEW

**ABUTMENT NOTES:**

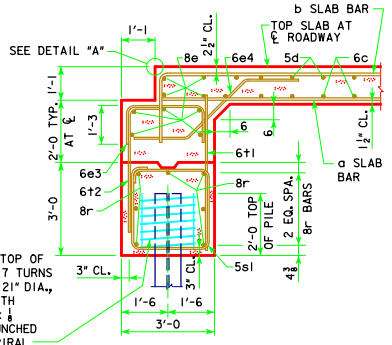
- ALL PILING HP10x42.
- THE CONCRETE AND REINFORCING STEEL FOR THE WINGS IS INCLUDED WITH THE SUPERSTRUCTURE.
- DETAILS ON THIS SHEET ARE TO BE USED ONLY WHEN ABUTMENTS ARE PLACED ON STEEL PILES. IF ROCK IS ENCOUNTERED CLOSER THAN 12' BELOW ABUTMENT FOOTING, SPECIAL ANALYSIS MAY BE REQUIRED.
- THE MINIMUM CLEAR DISTANCE FROM THE FACE OF THE CONCRETE TO NEAR REINFORCING BAR IS TO BE 2 INCHES UNLESS OTHERWISE NOTED OR SHOWN.
- STEEL ABUTMENT PILES SHALL BE DRIVEN TO FULL PENETRATION IF PRACTICABLE BUT IN NO CASE TO A BEARING VALUE LESS THAN SHOWN IN DESIGN PLANS.
- ALL REINFORCING STEEL IS TO BE GRADE 60.
- ABUTMENT PILING WAS DESIGNED FOR HL-93 LOADING WITH AN ALLOWANCE FOR 20 LBS. PER SQ. FT. FUTURE WEARING SURFACE.

NOTE: WING REINFORCING AND RAIL NOT SHOWN.  
6e3, 6e4 AND 8e ARE INCLUDED WITH SUPERSTRUCTURE QUANTITIES.

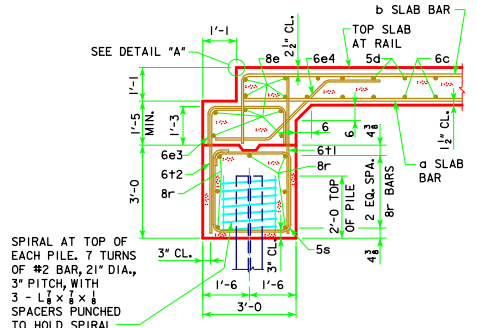


REAR ELEVATION

NOTE: THE BOTTOM OF FOOTING IS TO BE SLOPED TO COMPENSATE FOR GRADE ON THIS SKEWED ABUTMENT. THEREFORE BOTTOM OF FOOTING ELEVATIONS WILL BE REQUIRED AT EACH EXTERIOR PILE.



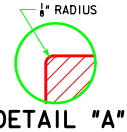
SECTION NORMAL TO ABUTMENT AT CL



SECTION NORMAL TO ABUTMENT AT GUTTERLINE

SPIRAL AT TOP OF EACH PILE. 7 TURNS OF #2 BAR, 2 1/2" DIA., 3" PITCH, WITH 3 - 1/2" x 1/2" x 1/2" SPACERS PUNCHED TO HOLD SPIRAL.

SPIRAL AT TOP OF EACH PILE. 7 TURNS OF #2 BAR, 2 1/2" DIA., 3" PITCH, WITH 3 - 1/2" x 1/2" x 1/2" SPACERS PUNCHED TO HOLD SPIRAL.



DETAIL "A"

LATEST REVISION DATE		STANDARD DESIGN - 44' ROADWAY, 3 SPAN BRIDGES <b>CONTINUOUS CONCRETE SLAB BRIDGES</b> JULY, 2014
	APPROVED BY BRIDGE ENGINEER 	<b>45° ABUTMENT DETAILS</b> <b>45° SKEW - STEEL PILING</b>
	J44-42-14	