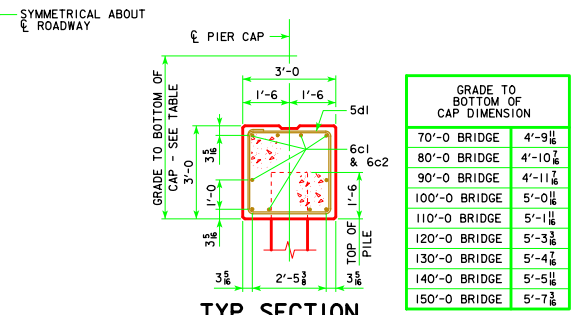
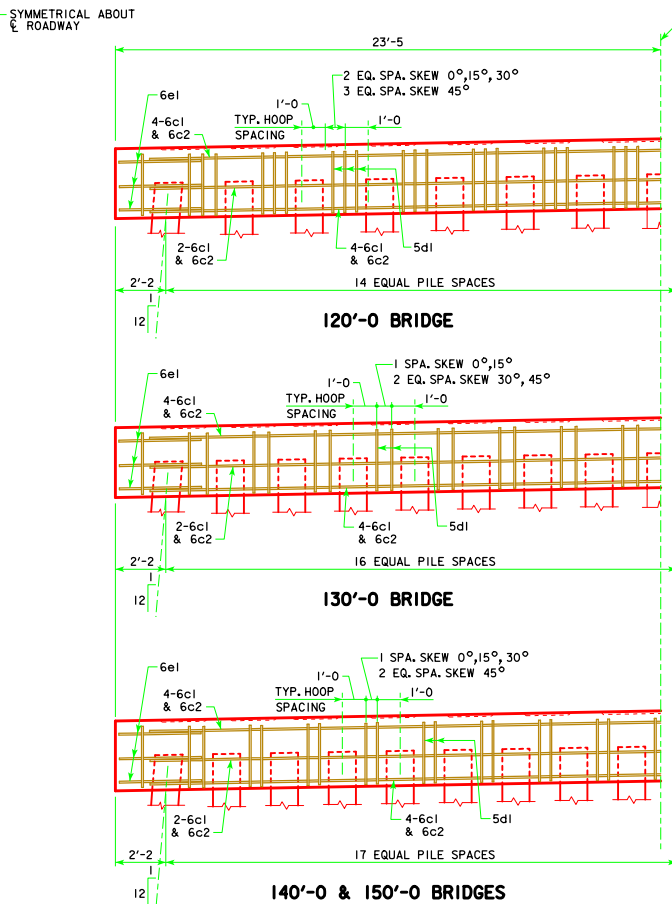
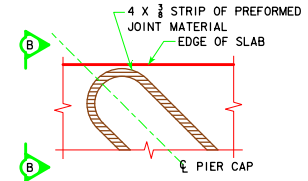


**TYP. HALF ELEVATION PIER CAP**  
(LOOKING PARALLEL TO  $\bar{C}$  ROADWAY)



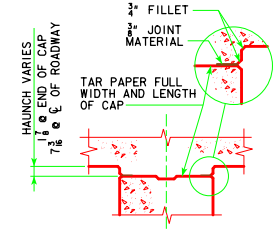
**TYP. SECTION**

GRADE TO BOTTOM OF CAP DIMENSION	
70'-0" BRIDGE	4'-9 1/8"
80'-0" BRIDGE	4'-10 1/8"
90'-0" BRIDGE	4'-11 1/8"
100'-0" BRIDGE	5'-0 1/8"
110'-0" BRIDGE	5'-1 1/8"
120'-0" BRIDGE	5'-3 1/8"
130'-0" BRIDGE	5'-4 1/8"
140'-0" BRIDGE	5'-5 1/8"
150'-0" BRIDGE	5'-7 1/8"

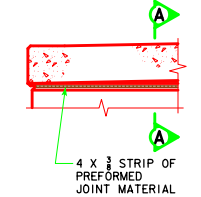


**PART PLAN**

SHOWING TREATMENT OF 4 X 3/8 STRIP OF PREFORMED JOINT MATERIAL AT ENDS OF PIER CAP. NOTE THAT JOINT MATERIAL IS TO GO ALL THE WAY AROUND PIER CAP FOR SQUARE AND SKEWED BRIDGES.



**PART SECT A-A**



**PART SECT B-B**

LATEST REVISION DATE  APPROVED BY BRIDGE ENGINEER <i>Thomas E. M. [Signature]</i>	
	STANDARD DESIGN - 44' ROADWAY, 3 SPAN BRIDGES <b>CONTINUOUS CONCRETE SLAB BRIDGES</b> JULY, 2014
	<b>NON-MONOLITHIC PIER CAP DETAILS ALL BRIDGES</b>
<b>J44-27-14</b>	