

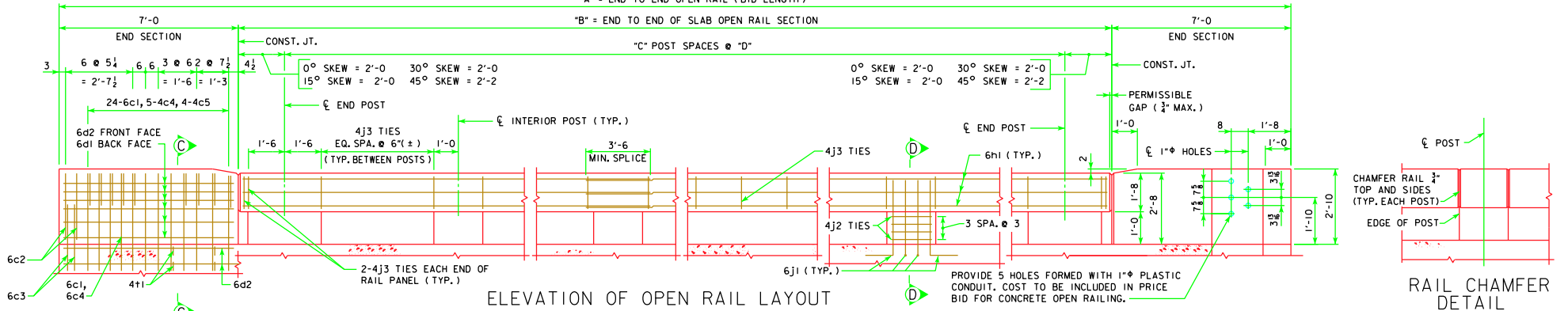
TABLE OF OPEN RAIL DIMENSIONS AND NUMBERS

DIMENSION OR NUMBER	70'-0"				80'-0"				90'-0"				100'-0"				110'-0"				120'-0"				130'-0"				140'-0"				150'-0"			
	0°	15°	30°	45°	0°	15°	30°	45°	0°	15°	30°	45°	0°	15°	30°	45°	0°	15°	30°	45°	0°	15°	30°	45°	0°	15°	30°	45°	0°	15°	30°	45°	0°	15°	30°	45°
A (FT.-IN.)	81'-0"	81'-1 1/4"	81'-5 1/2"	82'-3"	91'-0"	91'-1 1/4"	91'-5 1/2"	92'-3"	101'-0"	101'-1 1/4"	101'-5 1/2"	102'-3"	111'-0"	111'-1 1/4"	111'-5 1/2"	112'-3"	121'-0"	121'-1 1/4"	121'-5 1/2"	122'-3"	131'-0"	131'-1 1/4"	131'-5 1/2"	132'-3"	141'-0"	141'-1 1/4"	141'-5 1/2"	142'-3"	151'-0"	151'-1 1/4"	151'-5 1/2"	152'-3"	161'-0"	161'-1 1/4"	161'-5 1/2"	162'-3"
B (FT.-IN.)	67'-0"	67'-1 1/4"	67'-5 1/2"	68'-3"	77'-0"	77'-1 1/4"	77'-5 1/2"	78'-3"	87'-0"	87'-1 1/4"	87'-5 1/2"	88'-3"	97'-0"	97'-1 1/4"	97'-5 1/2"	98'-3"	107'-0"	107'-1 1/4"	107'-5 1/2"	108'-3"	117'-0"	117'-1 1/4"	117'-5 1/2"	118'-3"	127'-0"	127'-1 1/4"	127'-5 1/2"	128'-3"	137'-0"	137'-1 1/4"	137'-5 1/2"	138'-3"	147'-0"	147'-1 1/4"	147'-5 1/2"	148'-3"
C	8	8	8	8	10	10	10	10	11	11	11	11	12	12	12	12	13	13	13	13	15	15	15	15	16	16	16	16	17	17	17	17	18	18	18	18
D (FT.-IN.)	7'-10 1/2"	7'-10 1/4"	7'-11 1/2"	7'-11 1/4"	7'-3 3/4"	7'-3 3/2"	7'-4 1/4"	7'-4 1/2"	7'-6 1/4"	7'-6 1/2"	7'-7 1/4"	7'-7 1/2"	7'-9	7'-9 1/4"	7'-9 1/2"	7'-9 3/4"	7'-11 1/4"	7'-11 1/2"	7'-11 3/4"	7'-11 3/2"	7'-6 1/2"	7'-6 1/4"	7'-6 1/2"	7'-7 1/4"	7'-8 1/4"	7'-8 1/2"	7'-8 3/4"	7'-8 3/2"	7'-9 1/4"	7'-9 1/2"	7'-10 1/4"	7'-10 1/2"	7'-11 1/4"	7'-11 1/2"	7'-11 3/4"	7'-11 3/2"

*"A" = END TO END OPEN RAIL (BID LENGTH)

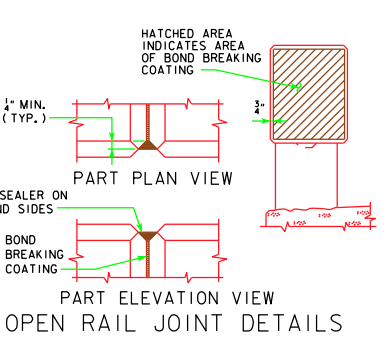
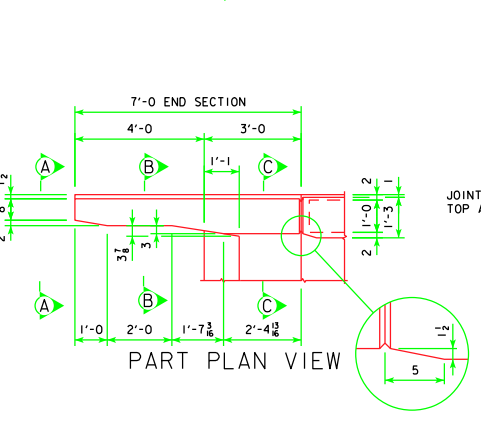
"B" = END TO END OF SLAB OPEN RAIL SECTION

"C" POST SPACES @ "D"

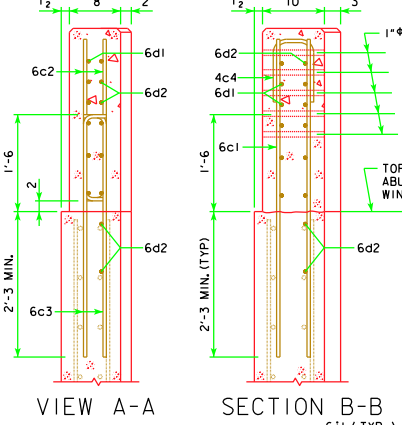


ELEVATION OF OPEN RAIL LAYOUT

RAIL CHAMFER DETAIL

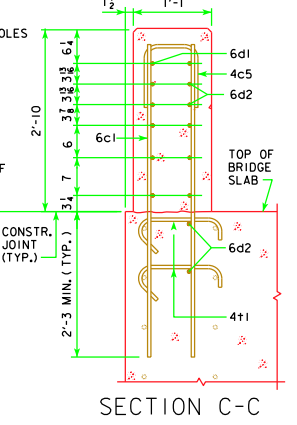


PART ELEVATION VIEW OPEN RAIL JOINT DETAILS

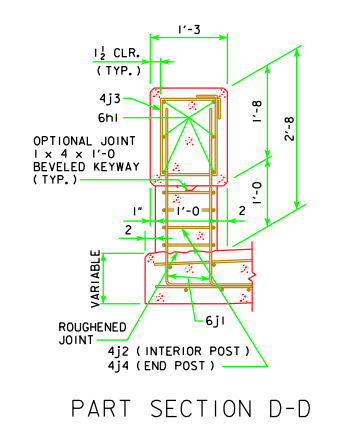


VIEW A-A

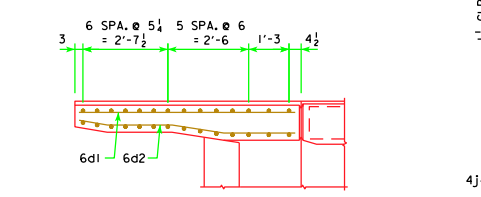
SECTION B-B



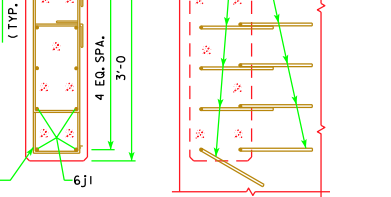
SECTION C-C



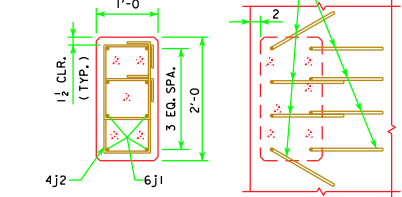
PART SECTION D-D



PART PLAN SECTION



END POST DETAILS (REQUIRED AT ENDS OF OPEN RAIL)



INTERIOR POST DETAILS

LATEST REVISION DATE 12-08	APPROVED BY BRIDGE ENGINEER <i>Thomas E. McQuill</i>		
		STANDARD DESIGN - 30' ROADWAY, 3 SPAN BRIDGES CONTINUOUS CONCRETE SLAB BRIDGES NOVEMBER, 2006	
OPEN RAIL DETAILS (TL-4)		J30-43-06	

REVISION 12-08 - REVISED END SECTION SHAPE AND REINFORCEMENT. RAIL DEPTH CHANGED TO 1'-8".
 REVISION 12-07 - PART SEC D-D MODIFIED TO SHOW VARIABLE DEPTH