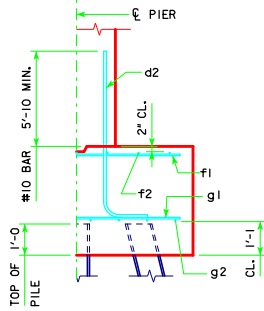
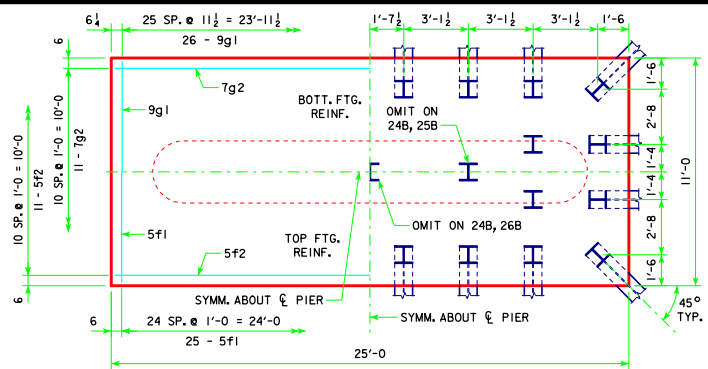


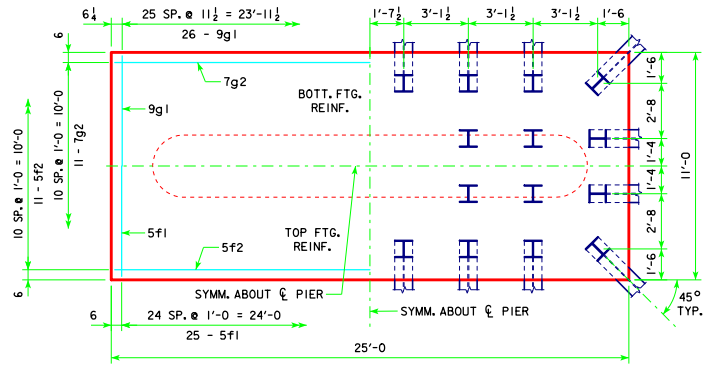
REVISED 05-13 - REVISION FOR LRFD PILE DESIGN.



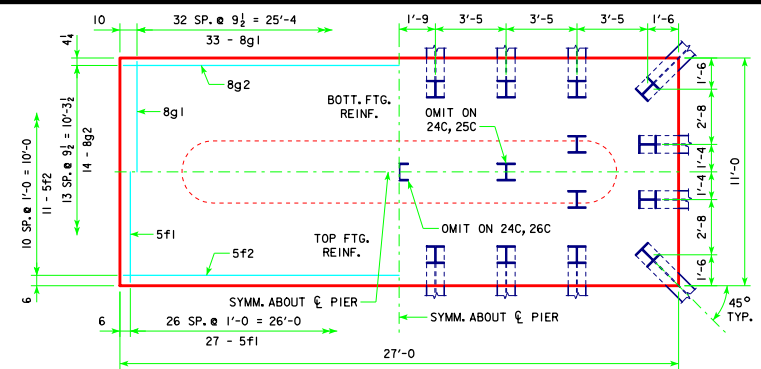
**TYPICAL SECTION**



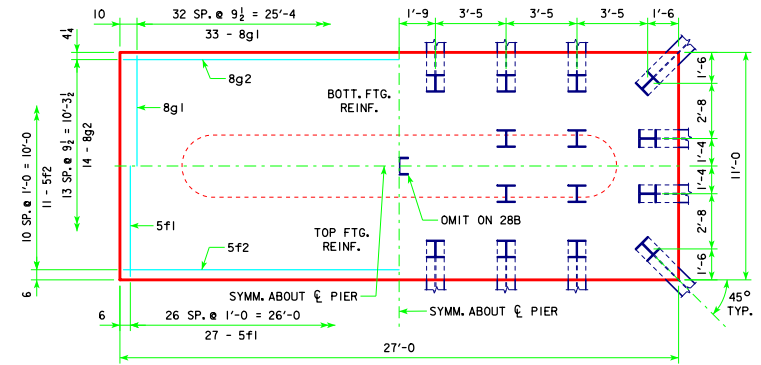
**4'-0 x 11'-0 x 25'-0 FOR 24B, 25B, 26B & 27B**



**4'-0 x 11'-0 x 25'-0 FOR 28A**



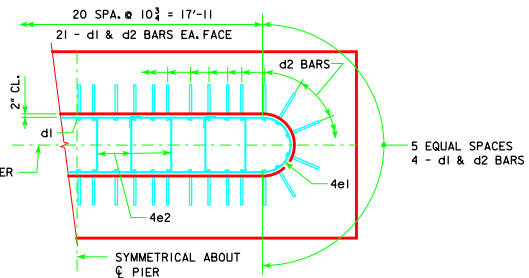
**4'-0 x 11'-0 x 27'-0 FOR 24C, 25C, 26C & 27C**



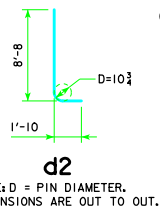
**4'-0 x 11'-0 x 27'-0 FOR 28B & 29A**

H IN FT.	C - ABUT. BRG.	C - LAYOUT	PILING (HP10x57)		FOOTING SIZE
			NO.	DES. BRG. (KIPS)	
20	1'-4	24B	141		4' x 11' x 25'
21	3'-10	24B	146		
22	6'-4	26B	144		
23	9'-0	27B	146		
24	1'-4	24B	143		4' x 11' x 25'
25	3'-10	25B	145		
26	6'-4	26B	146		
27	9'-0	28A	144		
28	1'-4	24C	143		4' x 11' x 27'
29	3'-10	25C	144		
30	6'-4	26C	145		
31	9'-0	28B	143		
32	1'-4	24C	145		4' x 11' x 27'
33	3'-10	25C	146		
34	6'-4	27C	144		
35	9'-0	28B	145		
36	1'-4	25C	145		4' x 11' x 27'
37	3'-10	26C	145		
38	6'-4	28B	142		
39	9'-0	29A	144		

NOTE: P<sub>U</sub> STRENGTH I DESIGN LOAD (KIPS) IS NOT THE VALUE USED IN THE FIELD FOR DRIVING PILES.



**d2 BAR LAYOUT**  
(SEE SECTION A-A ON SHEET H44-66-07.)



**d2**  
NOTE: D = PIN DIAMETER. DIMENSIONS ARE OUT TO OUT.

**FOOTING NOTES:**

- THESE FOOTINGS ARE DESIGNED AND DETAILED TO BE USED WITH THE CAP AND COLUMN DETAILS OF THE TEE PIERS AS SHOWN ON SHEET H44-66-07.
- BATTER PILES IN EXTERIOR ROWS 1:4 IN THE DIRECTION SHOWN.
- STEEL PILING USED AS POINT BEARING SHALL HAVE A MINIMUM DISTANCE OF APPROXIMATELY 10 FEET FROM BOTTOM OF FOOTING TO TOP OF BEARING ROCK. THE PILE LAYOUTS ARE SUCH THAT THE DISTANCE CENTER TO CENTER OF ADJACENT PILING SHALL NOT EXCEED 8'-0".
- PIER PILES SHALL BE DRIVEN TO VALUES SHOWN IN DESIGN PLANS.

05-13  
LATEST REVISION DATE  
*Thomas E. M. Donnell*  
APPROVED BY BRIDGE ENGINEER

STANDARD DESIGN - 44' ROADWAY, THREE SPAN BRIDGE

**PRETENSIONED PRESTRESSED CONCRETE BEAM BRIDGES**

MARCH, 2007

**TEE PIER-HP10x57 SRL-1 STEEL PILE FOOTINGS**

30° SKEW - H=25' TO 40'

**H44-69-07**