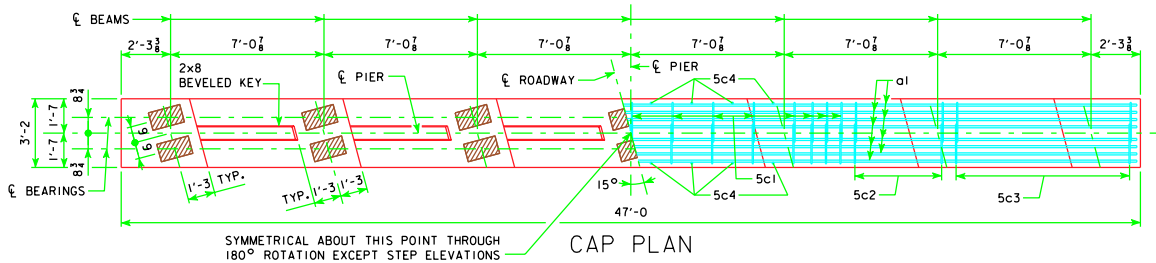


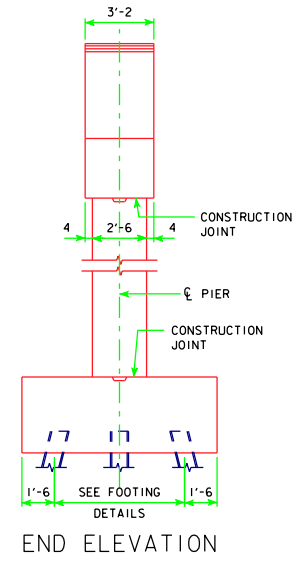
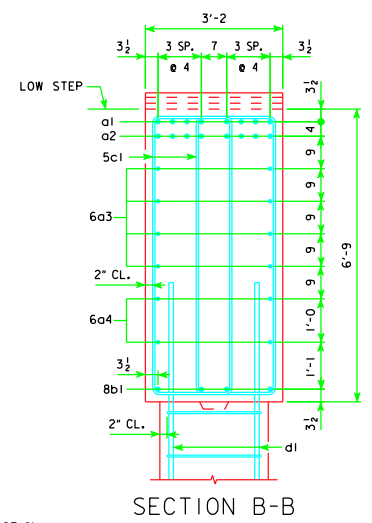
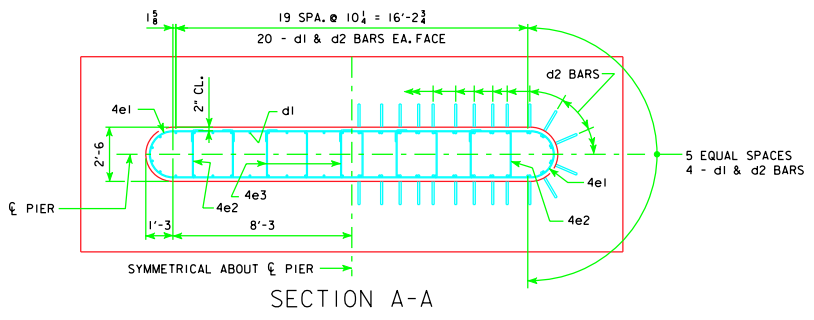
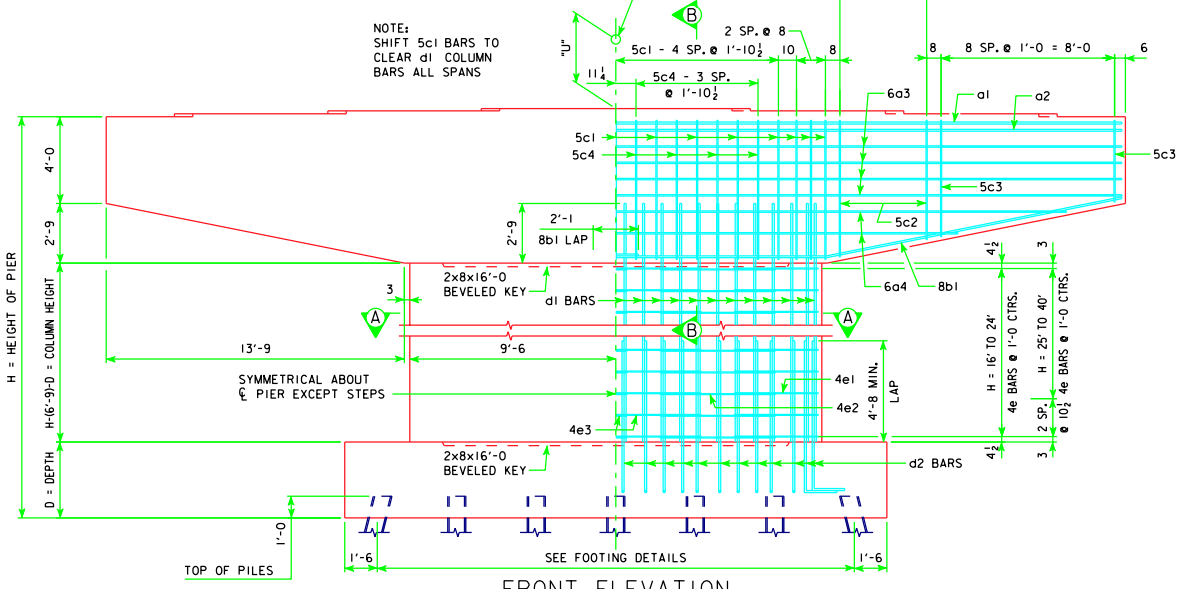
REVISED 11-09 - SHEET WAS REVISED TO MEET LRFD SPECIFICATIONS.



5c2 - 4 SP. @ 1'-0" = 4'-0" - 138'-10", 151'-4", 163'-10", 176'-4", 188'-10"
 5c2 - 6 SP. @ 8" = 4'-0" - 201'-4", 213'-10", 226'-4", 243'-0"

GRADE ELEV. AT PIER

NOTE:
 SHIFT 5c1 BARS TO CLEAR d1 COLUMN BARS ALL SPANS



PIER NOTES:
 SEE "TEE PIER NOTES" ON H44-02-07 FOR NOTES REGARDING APPLICATION OF THESE PIER STANDARDS.
 MINIMUM CLEAR DISTANCE FROM FACE OF CONCRETE TO NEAR REINFORCING BAR SHALL BE 2 INCHES UNLESS OTHERWISE NOTED OR SHOWN.
 ELIMINATE 2x8 BEVELED KEYWAY ON TOP OF CAP FOR EXPANSION PIERS.
 FOR SIZE OF BEARING PADS, SEE H44-37-07.
 SEE SHEET H44-15-07 FOR "U" DIMENSION.

11-09 LATEST REVISION DATE	<i>Thomas C. McQuinn</i> APPROVED BY BRIDGE ENGINEER		
		STANDARD DESIGN - 44' ROADWAY, THREE SPAN BRIDGE PRETENSIONED PRESTRESSED CONCRETE BEAM BRIDGES MARCH, 2007	
TEE PIER CAP AND COLUMN 15° SKEW		H44-58-07	