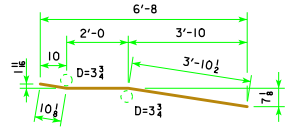


**REINFORCING BAR LIST - ONE ABUT. WING**

BAR	LOCATION	SHAPE	NO.	LENGTH	WEIGHT
5h1	HORIZONTAL BACK FACE		9	6'-8	63
5h3	HORIZONTAL TRAFFIC FACE		9	6'-9	63
5s1	VERTICAL BOTH FACES		16	6'-11	115
TOTAL (LBS.)					241

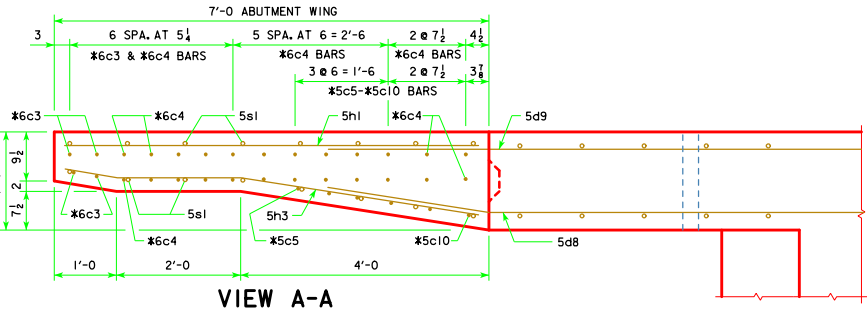


**5h3**  
NOTE: ALL DIMENSIONS ARE OUT TO OUT. D = PIN DIAMETER.

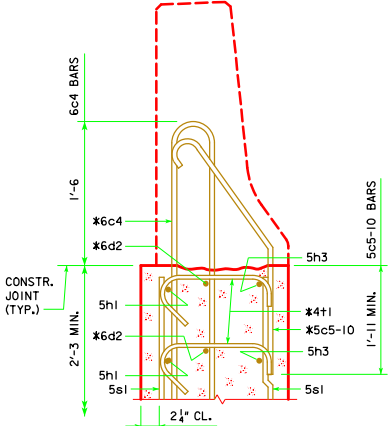
**CONCRETE PLACEMENT SUMMARY**

CONCRETE	TOTAL
ONE ABUTMENT WING	2.1
TOTAL (CU. YDS.)	2.1

**NOTE:**  
REINFORCING STEEL QUANTITY AND CONCRETE QUANTITY ARE TO BE ADDED TO THE SUPERSTRUCTURE QUANTITIES SHOWN ELSEWHERE IN THESE PLANS.

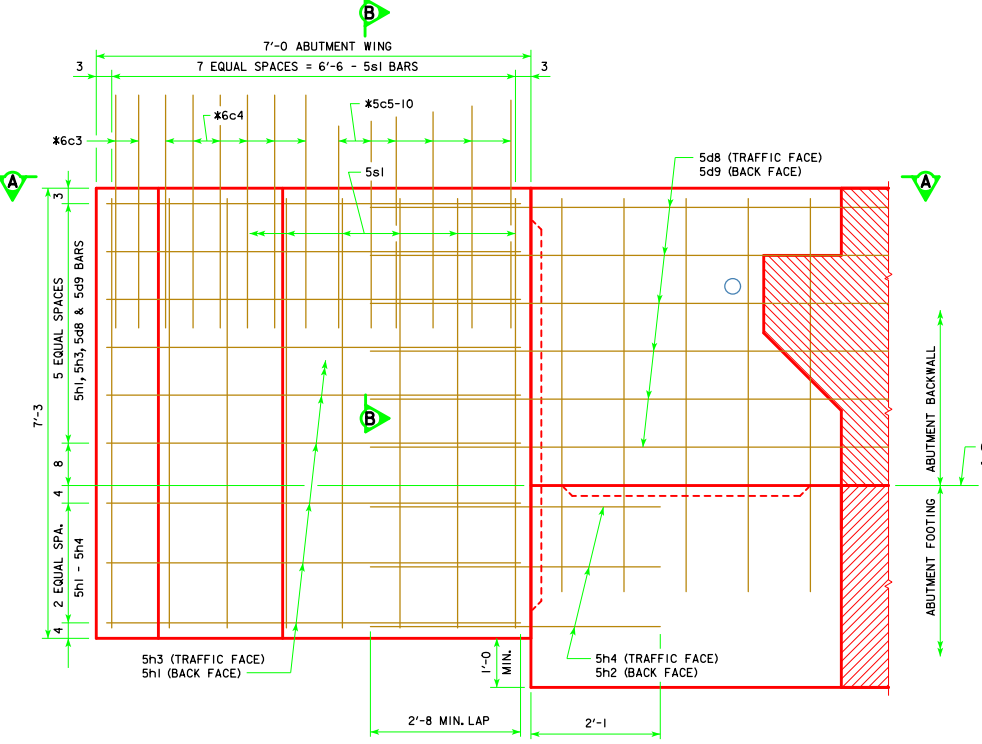


**VIEW A-A**



**SECTION B-B**

\* BARRIER RAIL END SECTION BARS TO BE PLACED WITH ABUTMENT WING.  
SEE END SECTION DETAILS IN THESE PLANS FOR DETAILS OF BARRIER RAIL END SECTION. REINFORCING BARS 6c3, 6c4, 5c5-10, 6d2 & 4t1 ARE INCLUDED IN THE SUPERSTRUCTURE QUANTITIES.



**ABUTMENT WING - ELEVATION VIEW**

'C' BEAM INTEGRAL ABUTMENT WING DETAILS

LATEST REVISION DATE	 IOWA Department of Transportation Highway Division
	STANDARD DESIGN - 30' ROADWAY, SINGLE SPAN BRIDGE <b>PRETENSIONED PRESTRESSED CONCRETE BEAM BRIDGES</b> APRIL, 2012
	WING DETAILS <span style="float: right;">H30S1-38-12</span>