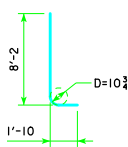


TYPICAL SECTION

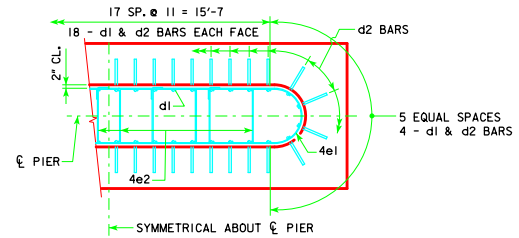


d2

NOTE: D = PIN DIAMETER. DIMENSIONS ARE OUT TO OUT.

H IN FT.	CL - CL ABUT. BRG.	PILING (HP10x57)		FOOTING SIZE
		NO. & LAYOUT	① LRFD P_u STRENGTH I_1 DES. LOAD (KIPS)	
18 TO 21	201'-4	11A	210	3'-6 x 8' x 23'
	213'-10	11A	217	
	226'-4	12A	208	
21 TO 24	243'-0	12A	215	3'-6 x 9' x 23'
	201'-4	11B	214	
	213'-10	12B	203	
24 TO 27	226'-4	12B	212	3'-6 x 9' x 23'
	243'-0	12B	219	
	201'-4	12B	202	
	213'-10	12B	209	
	226'-4	12B	217	
	243'-0	13A	213	

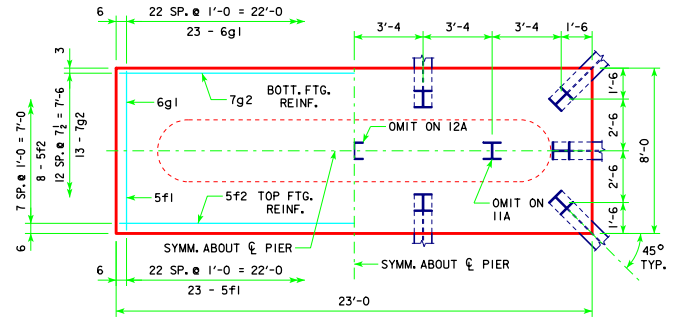
FOOTING SIZE	REINFORCING STEEL (ONE FOOTING)			TOTAL WEIGHT (LB.)	STRUCTURAL CONCRETE (CY)
	BAR NO., SIZE & SPACING	LENGTH	WEIGHT (LB.)		
3'-6 x 8' x 23'	d2 44 - #10 AS SHOWN	10'-0	1893	3133	23.9
	f1 23 - #5 @ 1'-0	7'-8	184		
	f2 8 - #5 @ 1'-0	22'-8	189		
	g1 23 - #6 1'-0	7'-8	265		
	g2 13 - #7 @ 0'-7	22'-8	602		
3'-6 x 9' x 23'	d2 44 - #10 AS SHOWN	10'-0	1893	3323	26.8
	f1 23 - #5 @ 1'-0	8'-8	208		
	f2 9 - #5 @ 1'-0	22'-8	213		
	g1 23 - #7 @ 1'-0	8'-8	407		
	g2 13 - #7 @ 0'-8	22'-8	602		



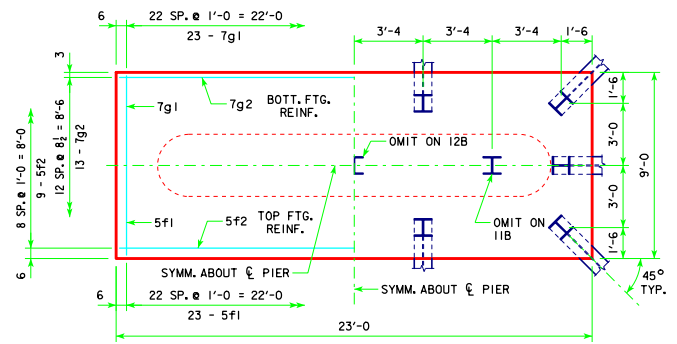
d2 LAYOUT

(SEE SECTION A-A ON SHEET H30-78-06.)

① NOTE: P_u , STRENGTH I DESIGN LOAD (KIPS) IS NOT THE VALUE USED IN THE FIELD FOR DRIVING PILES.



3'-6 x 8'-0 x 23'-0 FOR 11A & 12A



3'-6 x 9'-0 x 23'-0 FOR 11B, 12B & 13A

FOOTING NOTES:

THESE FOOTINGS ARE DESIGNED AND DETAILED TO BE USED WITH THE CAP AND COLUMN DETAILS OF THE TEE PIERS AS SHOWN ON SHEET H30-57-06.

BATTER PILES IN EXTERIOR ROWS 1:4 IN THE DIRECTION SHOWN.

STEEL PILING USED AS POINT BEARING SHALL HAVE A MINIMUM DISTANCE OF APPROXIMATELY 10 FEET FROM BOTTOM OF FOOTING TO TOP OF BEARING ROCK. THE PILE LAYOUTS ARE SUCH THAT THE DISTANCE CENTER TO CENTER OF ADJACENT PILING SHALL NOT EXCEED 8'-0.

PIER PILES SHALL BE DRIVEN TO VALUES SHOWN IN DESIGN PLANS.

LATEST REVISION DATE 04-13	APPROVED BY BRIDGE ENGINEER <i>Thomas E. M. Donnell</i>	Iowa Department of Transportation Highway Division	
		STANDARD DESIGN - 30' ROADWAY, THREE SPAN BRIDGES PRETENSIONED PRESTRESSED CONCRETE BEAM BRIDGES DECEMBER, 2006	
TEE PIER-HP10x57 SRL-2 STEEL PILE FOOTINGS		H30-81-06	
45° SKEW - H=16' to 24'			

REVISED 04-13 - REVISION FOR LRFD PILE DESIGN.