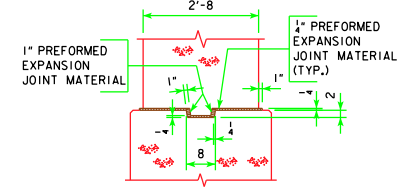
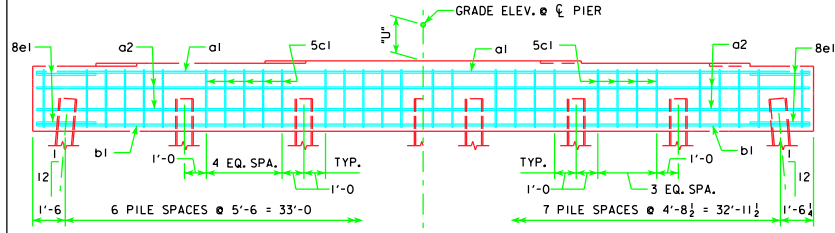


TYPICAL PLAN

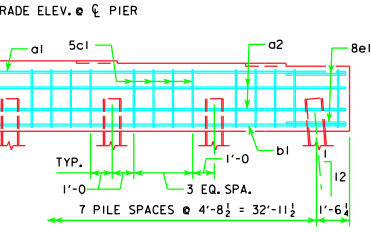
NOTE:
THE HEIGHT OF THE STEPS ON THE BRIDGE SEAT IS EQUAL TO THE DIFFERENCE IN ELEVATIONS OF THE TOP OF SLAB AT ADJACENT BEAMS ALONG ϵ PIER. SEE SHEET H30-22-06 FOR "U" DIMENSION.



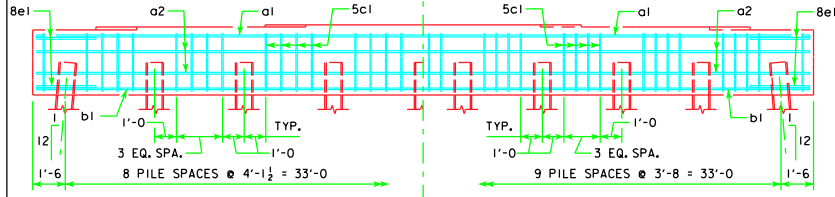
KEYED NOTCH DETAIL



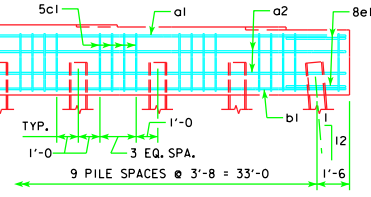
7 PILE BENT



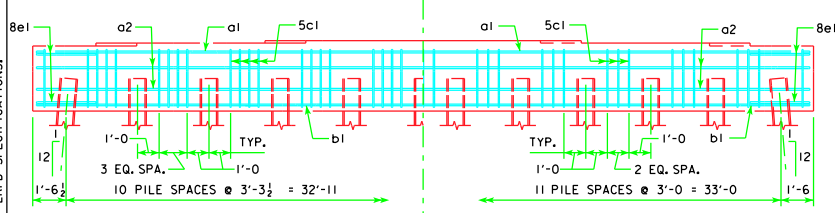
8 PILE BENT



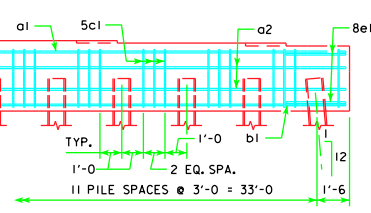
9 PILE BENT



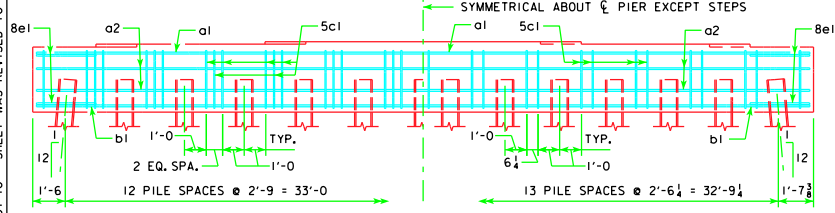
10 PILE BENT



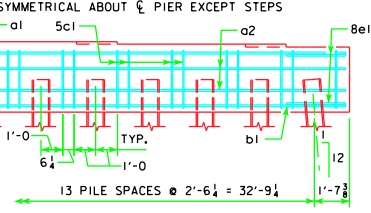
11 PILE BENT



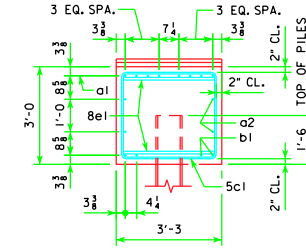
12 PILE BENT



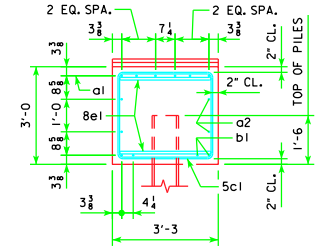
13 PILE BENT



14 PILE BENT



VIEW A-A FOR 7 PILE BENT



VIEW A-A FOR 8, 9, 10, 11, 12, 13 & 14 PILE BENTS

REVISED 07-10 - SHEET WAS REVISED TO MEET LRFD SPECIFICATIONS.

07-10 LATEST REVISION DATE <i>M. C. McQuinn</i> APPROVED BY BRIDGE ENGINEER	 Iowa Department of Transportation Highway Division	
	STANDARD DESIGN - 30' ROADWAY, THREE SPAN BRIDGES PRETENSIONED PRESTRESSED CONCRETE BEAM BRIDGES DECEMBER, 2006	
PILE BENT PIERS 30° SKEW		H30-51-06