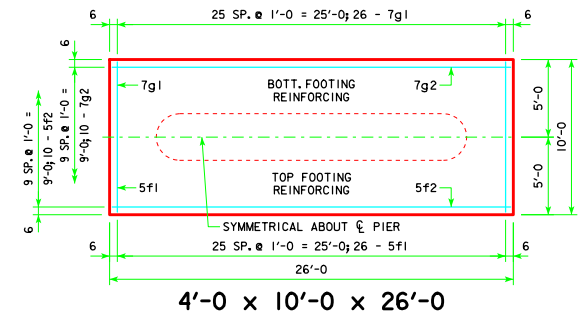
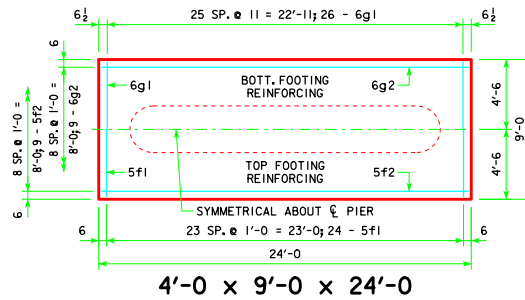
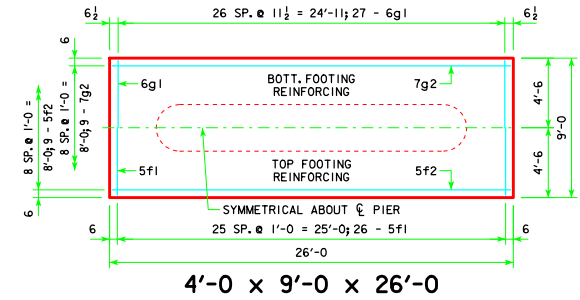
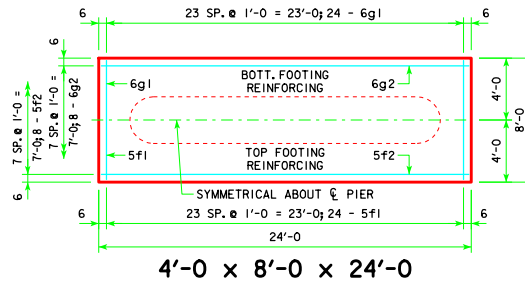


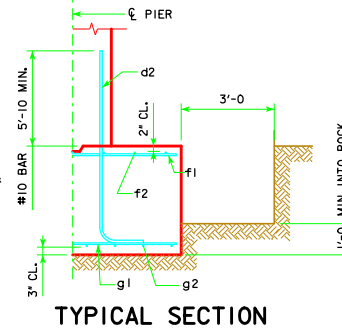
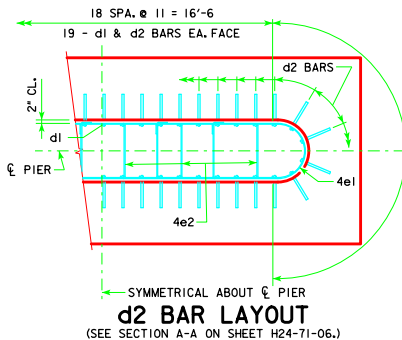
d2

NOTE: D = PIN DIAMETER.
DIMENSIONS ARE OUT TO OUT.

H IN FT.	CL - CL ABUT. BRG.	FOOTING SIZE
25 TO 27	138'-10"	4' x 8' x 24'
	151'-4"	
	163'-10"	
	176'-4"	
	188'-10"	
28 TO 30	201'-4"	4' x 9' x 24'
	213'-10"	
	226'-4"	
	239'-0"	
	251'-4"	
31 TO 33	264'-0"	4' x 9' x 26'
	276'-4"	
	288'-10"	
	301'-4"	
	313'-10"	
34 TO 36	326'-4"	4' x 9' x 26'
	338'-10"	
	351'-4"	
	363'-10"	
	376'-4"	
37 TO 40	388'-10"	4' x 10' x 26'
	401'-4"	
	413'-10"	
	426'-4"	
	438'-10"	



FOOTING SIZE	REINFORCING STEEL (ONE FOOTING)				STRUCTURAL CONCRETE (CY)	
	BAR	NO., SIZE & SPACING	LENGTH	WEIGHT (LB.)		
4' x 8' x 24'	d2	46 - #10 AS SHOWN	11'-4"	2243	3192	28.4
	f1	24 - #5 @ 1'-0"	7'-8"	192		
	f2	8 - #5 @ 1'-0"	23'-8"	197		
	g1	24 - #6 @ 1'-0"	7'-8"	276		
	g2	8 - #6 @ 1'-0"	23'-8"	284		
4' x 9' x 24'	d2	46 - #10 AS SHOWN	11'-4"	2243	3340	32.0
	f1	24 - #5 @ 1'-0"	8'-8"	217		
	f2	9 - #5 @ 1'-0"	23'-8"	222		
	g1	26 - #6 @ 0'-11"	8'-8"	338		
	g2	9 - #6 @ 1'-0"	23'-8"	320		
4' x 9' x 26'	d2	46 - #10 AS SHOWN	11'-4"	2243	3542	34.7
	f1	26 - #5 @ 1'-0"	8'-8"	235		
	f2	9 - #5 @ 1'-0"	25'-8"	241		
	g1	27 - #6 @ 0'-11 1/2"	8'-8"	351		
	g2	9 - #7 @ 1'-0"	25'-8"	472		
4' x 10' x 26'	d2	46 - #10 AS SHOWN	11'-4"	2243	3812	38.5
	f1	26 - #5 @ 1'-0"	9'-8"	262		
	f2	10 - #5 @ 1'-0"	25'-8"	268		
	g1	26 - #7 @ 1'-0"	9'-8"	514		
	g2	10 - #7 @ 1'-0"	25'-8"	525		



FOOTING NOTES:

THESE SPREAD FOOTINGS ARE DESIGNED AND DETAILED TO BE USED WITH THE CAP AND COLUMN DETAILS OF THE TEE PIERS AS SHOWN ON SHEET H24-71-06.

THESE SPREAD FOOTINGS SHALL EXTEND AT LEAST 6 INCHES INTO SUITABLE FOUNDATION ROCK AND THE LAST 6 INCHES OF ROCK EXCAVATION SHALL BE TO NEAT LINES OF MASONRY. THE FOUNDATION ROCK SHALL HAVE A MINIMUM LRFD NOMINAL BEARING RESISTANCE OF 30 KIPS PER SQUARE FOOT (ALLOWABLE BEARING VALUE OF AT LEAST 5 TONS PER SQUARE FOOT).

LATEST REVISION DATE 04-12	APPROVED BY BRIDGE ENGINEER <i>Thomas E. McQuillan</i>	Iowa Department of Transportation Highway Division	
		STANDARD DESIGN - 24' ROADWAY, THREE SPAN BRIDGE PRETENSIONED PRESTRESSED CONCRETE BEAM BRIDGES DECEMBER, 2006	
TEE PIER - SPREAD FOOTINGS		H24-77-06	
45° SKEW - H=25' TO 40'			

REVISED 04-12 - EXCAVATION LIMIT WAS CHANGED TO 3'-0".