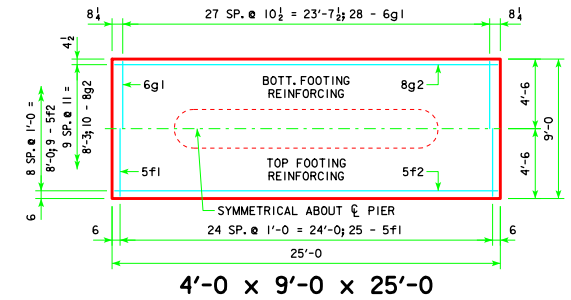
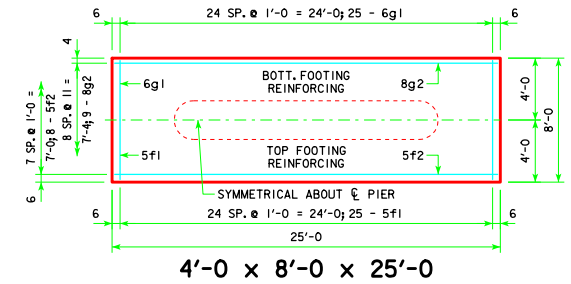
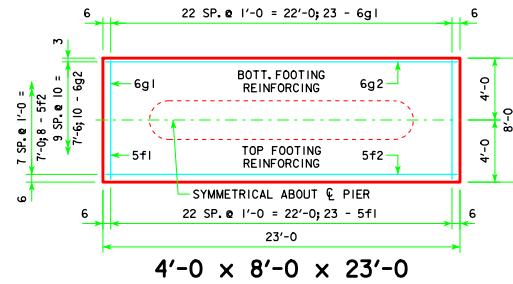


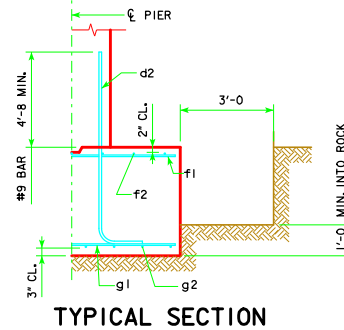
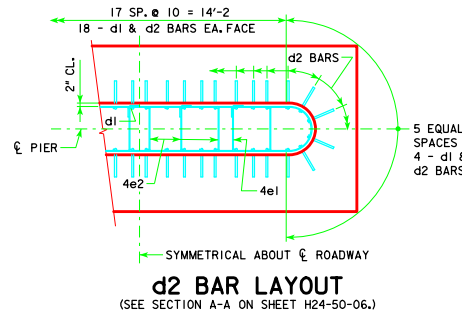
**d2**

NOTE: D = PIN DIAMETER.  
DIMENSIONS ARE OUT TO OUT.



H IN ABUT. FT.	CL - CL BRG.	FOOTING SIZE
25 TO 27	138'-10 151'-4 163'-10 176'-4 188'-10 201'-4 213'-10 226'-4 243'-0	4' x 8' x 23'
28 TO 30	138'-10 151'-4 163'-10 176'-4 188'-10 201'-4 213'-10 226'-4 243'-0	4' x 8' x 25'
31 TO 33	201'-4 213'-10 226'-4 243'-0	4' x 8' x 25'
34 TO 36	201'-4 213'-10 226'-4 243'-0	4' x 9' x 25'
37 TO 40	201'-4 213'-10 226'-4 243'-0	4' x 9' x 25'

FOOTING SIZE	REINFORCING STEEL (ONE FOOTING)			TOTAL WEIGHT (LB.)	STRUCTURAL CONCRETE (CY)
	BAR NO., SIZE & SPACING	LENGTH	WEIGHT (LB.)		
4' x 8' x 23'	d2 44 - #9 AS SHOWN	9'-11	1484		
	f1 23 - #5 @ 1'-0	7'-8	184		
	f2 8 - #5 @ 1'-0	22'-8	189		
	g1 23 - #6 @ 1'-0	7'-8	265		
4' x 8' x 25'	d2 44 - #9 AS SHOWN	9'-11	1484		
	f1 25 - #5 @ 1'-0	7'-8	200		
	f2 8 - #5 @ 1'-0	24'-8	206		
	g1 25 - #6 @ 1'-0	7'-8	288		
4' x 9' x 25'	d2 44 - #9 AS SHOWN	9'-11	1484		
	f1 25 - #5 @ 1'-0	8'-8	226		
	f2 9 - #5 @ 1'-0	24'-8	232		
	g1 28 - #6 @ 0'-10 1/2	8'-8	364		
	g2 10 - #8 @ 0'-11	24'-8	659		



**FOOTING NOTES:**

THESE SPREAD FOOTINGS ARE DESIGNED AND DETAILED TO BE USED WITH THE CAP AND COLUMN DETAILS OF THE TEE PIERS AS SHOWN ON SHEET H24-50-06.

THESE SPREAD FOOTINGS SHALL EXTEND AT LEAST 6 INCHES INTO SUITABLE FOUNDATION ROCK AND THE LAST 6 INCHES OF ROCK EXCAVATION SHALL BE TO NEAT LINES OF MASONRY. THE FOUNDATION ROCK SHALL HAVE A MINIMUM LRFD NOMINAL BEARING RESISTANCE OF 30 KIIPS PER SQUARE FOOT (ALLOWABLE BEARING VALUE OF AT LEAST 5 TONS PER SQUARE FOOT).

04-12 LATEST REVISION DATE	 APPROVED BY BRIDGE ENGINEER	 STANDARD DESIGN - 24' ROADWAY, THREE SPAN BRIDGE <b>PRETENSIONED PRESTRESSED CONCRETE BEAM BRIDGES</b> DECEMBER, 2006	<b>TEE PIER - SPREAD FOOTINGS</b> 0° SKEW - H=25' TO 40'	<b>H24-56-06</b>

REVISED 04-12 - EXCAVATION LIMIT WAS CHANGED TO 3'-0.