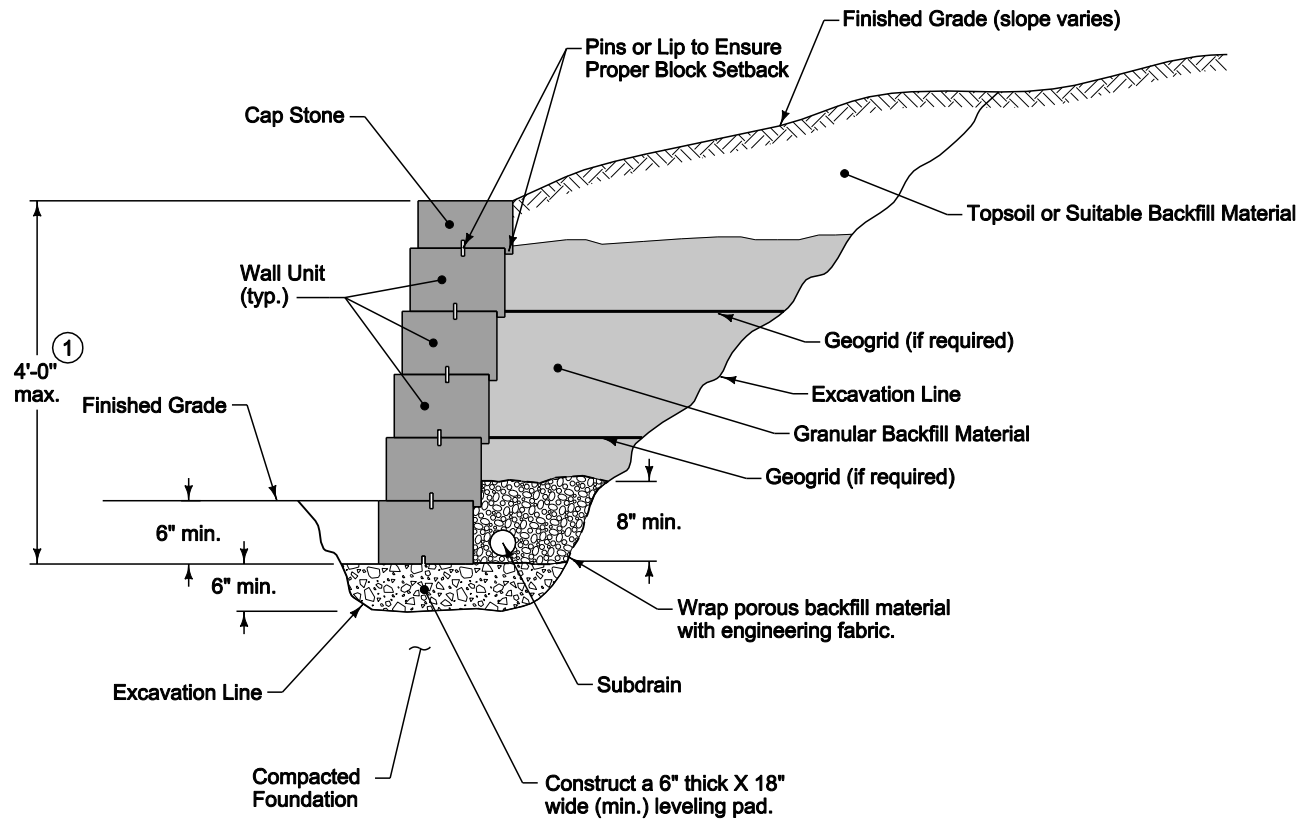


Exact dimensions, wall batter, backfill limits, reinforcement, and leveling pad materials and dimensions will be specified by the wall manufacturer.

① For walls higher than 4 feet, use segmental block retaining wall.



TYPICAL SECTION

	REVISION	
	New	10-18-11
	<b>9070.102</b> SHEET 1 of 1	
SUDAS Standard Specifications		
MODULAR BLOCK RETAINING WALL		