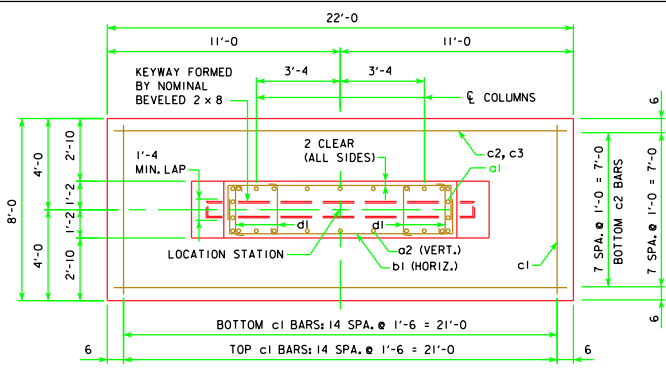
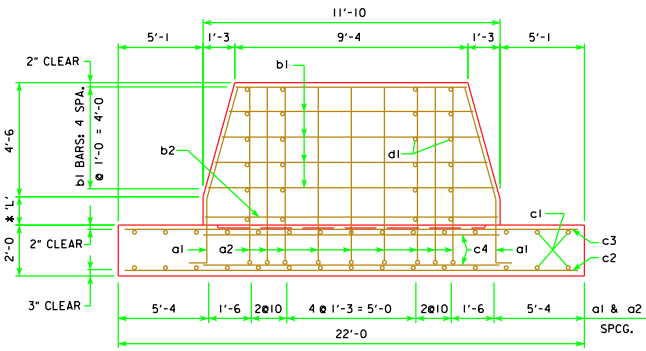


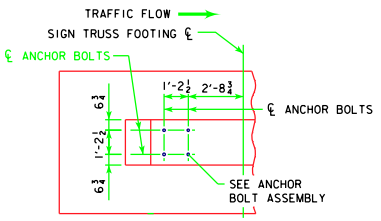
REVISED 05-10 - THE BENT BAR DETAIL a1 WAS BENT IN THE OPPOSITE DIRECTION AND HAS BEEN CORRECTED.



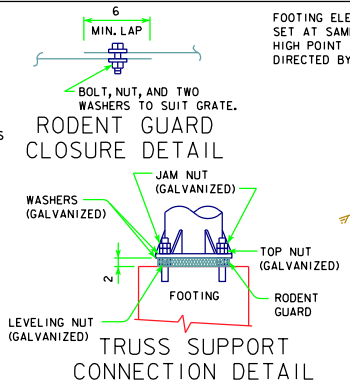
PLAN
(ANCHOR BOLT ASSEMBLIES NOT SHOWN.)



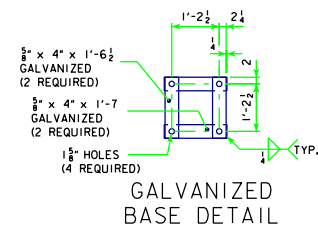
SIDE ELEVATION
(ANCHOR BOLT ASSEMBLIES NOT SHOWN.)
* 'L' SHALL NOT EXCEED 6'-0"



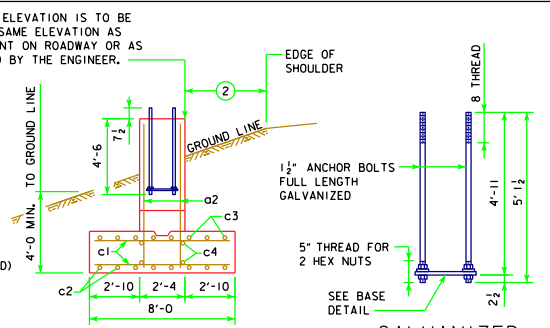
ANCHOR BOLT PLACEMENT DETAILS



TRUSS SUPPORT CONNECTION DETAIL



GALVANIZED BASE DETAIL



END ELEVATION

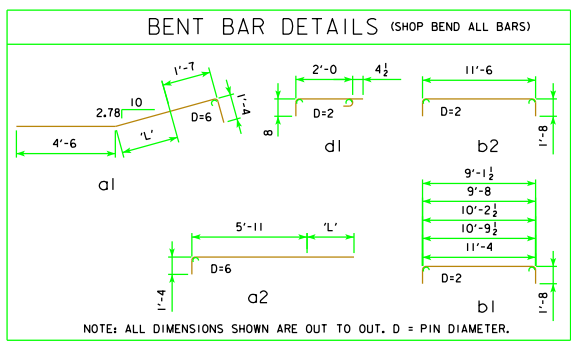
GALVANIZED ANCHOR BOLT ASSEMBLY

GENERAL NOTES:

- STRUCTURAL CONCRETE, CLASS C, SHALL BE USED FOR THE FOOTING.
- EXCAVATION FOR FOOTING SHALL BE TO NEAT LINES AND CONCRETE SHALL BE PLACED AGAINST THE UNDISTURBED MATERIAL. ALL EXCAVATION FOR THE FOOTING SHALL BE DISPOSED OF IN THE AREA ADJACENT TO THE FOOTING AND SHAPED TO NORMAL GROUND CONTOUR, UNLESS OTHERWISE DIRECTED BY THE ENGINEER. MAXIMUM DESIGN BEARING CAPACITY IS 1.0 TONS PER SQUARE FOOT.
- THE REQUIREMENTS PER FOOTING ARE TWO ANCHOR BOLT ASSEMBLIES INCLUDING SHIMS, NUTS (5 PER BOLT) AND WASHERS. REFER TO HARDWARE CLASSIFICATION TABLE FOR MATERIALS AND GALVANIZING REQUIREMENTS.
- A RODENT GUARD SHALL BE PLACED BETWEEN THE CONCRETE FOOTING AND THE BASE PLATE, SEE MATERIALS I.M. 443.01.
- PRICE BID FOR CONTRACT ITEMS SHALL INCLUDE ALL LABOR AND MATERIALS NECESSARY TO CONSTRUCT OVERHEAD SIGN TRUSS AS DETAILED HEREON. THE COST OF FURNISHING AND INSTALLING ANCHOR BOLT ASSEMBLIES, AND RODENT GUARDS ARE TO BE INCLUDED IN THE UNIT PRICE BID FOR STRUCTURAL CONCRETE. CONTRACT ITEMS FOR OVERHEAD SIGN FOOTING CONSTRUCTION ARE:
 - EPOXY COATED REINFORCING STEEL, POUNDS
 - STRUCTURAL CONCRETE (MISCELLANEOUS), CUBIC YARDS
 - EXCAVATION, CUBIC YARDS OF CLASS SPECIFIED
- ALL ANCHOR BOLT MATERIAL SHALL COMPLY WITH THE REQUIREMENTS OF IOWA DOT MATERIALS IM 453.08.

② SEE FOOTING TABULATION.

CONCRETE PLACEMENT QUANTITIES (ONE FOOTING)			
ITEM	'L' = 0	EACH 1'-0" OF 'L'	
WALL	4.12	1.02	
FOOTING	13.04		
TOTAL (C.Y.)	17.16	1.02	



BENT BAR DETAILS (SHOP BEND ALL BARS)

REINFORCING BAR LIST - EPOXY COATED (ONE FOOTING)									
	SIZE	SHAPE	'L' = 0				EACH 1'-0" OF 'L'		
			NO.	LENGTH	WEIGHT	SPACING	NO.	LENGTH	WEIGHT
a1	8		8	7'-5"	158	SEE DETAIL	8	1'-0" (A)	21
a2	8		18	7'-3"	348	SEE DETAIL	18	1'-0" (A)	48
b1	4		10	Varies	91	1'-0"	---	---	---
b2	4		---	---	---	---	2 (B)	14'-10"	20
c1	6		30	7'-6"	338	1'-6"	---	---	---
c2	8		8	21'-6"	459	1'-0"	---	---	---
c3	6		8	21'-6"	258	1'-0"	---	---	---
c4	4		4	11'-10"	32	SEE DETAIL	---	---	---
d1	4		20	3'-0 1/2"	41	SEE DETAIL	4 (C)	3'-0 1/2"	8
			TOTAL 1725 lbs			TOTAL 97 lbs			

(A) ADDITIONAL LENGTH TO BAR a1 OR a2 FOR 'L' > 0 (C) FOUR IN EACH 1'-0" OF 'L'.
(B) TWO IN EACH 1'-0" OF 'L'.

LATEST REVISION DATE	APPROVED BY BRIDGE ENGINEER		
		STANDARD DESIGN ALUMINUM OVERHEAD SIGN TRUSS WITH GALVANIZED STEEL SUPPORTS FEBRUARY, 2006	
		FOOTING DETAILS	STOH-15-06

50' to 100' SPANS