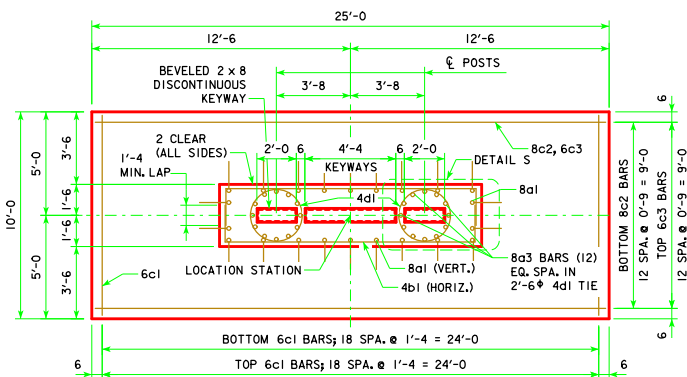


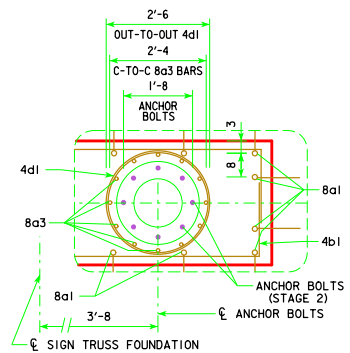
REVISION: 06-13 - CHANGED LABEL FOR DETAIL 4d1 TO REFLECT THE DESIGN OF SOST-19-11. THIS SHEET ISSUED 03-13.



**PLAN**

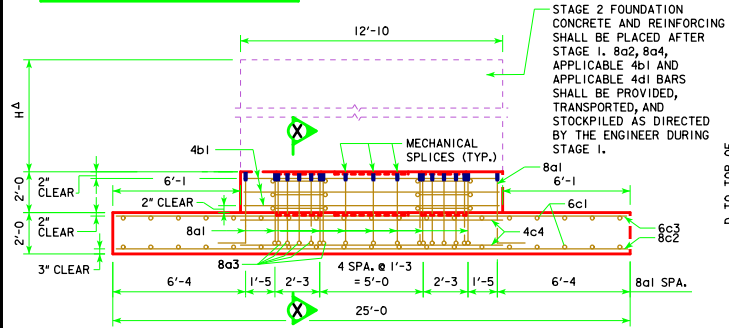
CONCRETE PLACEMENT QUANTITIES	
ONE FOUNDATION - STAGE 1	
ITEM	C.Y.
WALL (STAGE 1)	2.9
FOOTING	18.5
<b>TOTAL</b>	<b>21.4</b>

**4H - SHALL NOT EXCEED 8'-6" NOR BE LESS THAN 5'-0"**

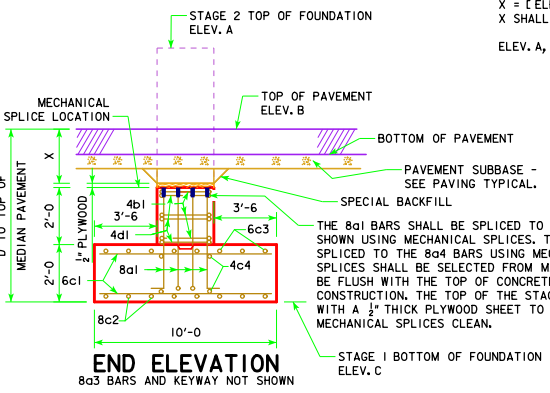


**DETAIL S**  
ANCHOR BOLT AND ANCHOR REINFORCING LOCATION

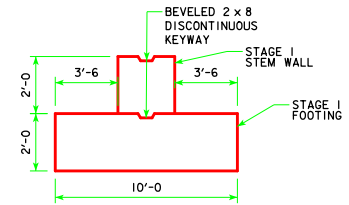
KEYWAY NOT SHOWN  
ANCHOR BOLTS SHOWN FOR INFORMATION ONLY. ANCHOR BOLT ASSEMBLIES WILL BE PLACED DURING STAGE 2.  
SEE SOST-20-11 FOR ANCHOR BOLT ASSEMBLY DETAILS.



**SIDE ELEVATION**



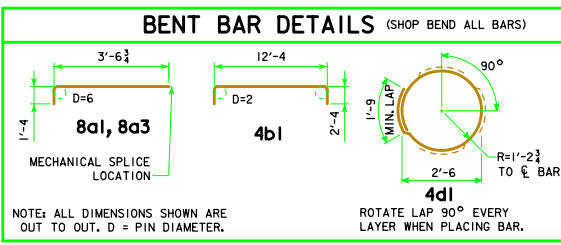
**END ELEVATION**



**SECTION X-X**  
SHOWING KEYWAYS  
REINFORCING NOT SHOWN

**REINFORCING BAR LIST - EPOXY COATED**  
ONE FOUNDATION

SIZE	SHAPE	TABULATED VALUE FOR H = 5'-0			EACH 1'-0 OF H		
		NO.	LENGTH	WEIGHT	NO.	LENGTH	WEIGHT
8a1		22	4'-11	289	---	---	---
8a2*		22	4'-11	289	SEE DETAIL	---	---
8a3		24	4'-11	315	SEE DETAIL	---	---
8a4*		24	4'-11	315	SEE DETAIL	24	1'-0 (A) 64
4b1*		18	17'-0	204	1'-0 (C) 2 (B)	17'-0	23
6c1		38	9'-6	542	1'-4	---	---
8c2		13	24'-6	850	0'-9	---	---
6c3		13	24'-6	478	0'-9	---	---
4c4		4	12'-8	34	SEE DETAIL	---	---
4d1*	○	20*	9'-6	127	1'-0 (C) 2 (B)	9'-6	13
				<b>TOTAL 3443 LBS.</b>	<b>TOTAL 159 LBS.</b>		



- (A) ADDITIONAL LENGTH TO BARS 8a2 AND 8a4 FOR H > 5'-0
- (B) TWO IN EACH 1'-0 OF H
- (C) MAINTAIN UNIFORM 1'-0 SPACING FOR ALL VALUES OF L, WITH REMAINDER SPACING AT BOTTOM OF STAGE 2 STEM WALL 2'x9'1'-0.

\*\* BUNDLE TWO 4d1 CIRCULAR TIES IN TOP LAYER.

**GENERAL NOTES:**

STRUCTURAL CONCRETE, CLASS C, SHALL BE USED FOR THE FOUNDATION.  
EXCAVATION FOR THE FOUNDATION SHALL BE TO NEAT LINES AND CONCRETE SHALL BE PLACED AGAINST THE UNDISTURBED MATERIAL. ALL EXCAVATION FOR THE FOUNDATION SHALL BE DISPOSED AS DIRECTED BY THE ENGINEER. MAXIMUM DESIGN BEARING CAPACITY IS 1.0 TON PER SQUARE FOOT.  
ACCURATE PLACEMENT OF 8a3 BARS SHALL BE CONSIDERED ESSENTIAL. 8a4 BARS WILL BE MECHANICALLY SPLICED TO 8a3 BARS DURING STAGE 2 AND MUST NOT INTERFERE WITH ANCHOR BOLT ASSEMBLIES.  
ALL MECHANICAL SPLICE ASSEMBLIES TO BE USED IN SPLICING 8a1, 8a2, 8a3, AND 8a4 BARS SHALL BE EPOXY COATED.  
PRICE BID FOR CONTRACT ITEMS SHALL INCLUDE ALL LABOR AND MATERIALS NECESSARY TO CONSTRUCT STAGE 1 AND STAGE 2 OF OVERHEAD SIGN TRUSS FOUNDATION AS DETAILED ON THIS SHEET AND ON ACCOMPANYING SHEET SOST-20-11. THE COST OF ALL SPLICE ASSEMBLIES IS TO BE INCLUDED IN THE PRICE BID FOR "REINFORCING STEEL, EPOXY COATED" AND NO SEPARATE PAYMENT WILL BE MADE. THE WEIGHT OF MECHANICAL SPLICE ASSEMBLIES IS NOT INCLUDED IN THE QUANTITY SHOWN FOR "REINFORCING STEEL, EPOXY COATED". A TOTAL OF 46 SPLICES WILL BE REQUIRED.  
THE COST OF FURNISHING AND INSTALLING ANCHOR BOLT ASSEMBLIES AND RODENT GUARDS, THE COST OF PLACING AND REMOVING OF SPECIAL BACKFILL (SEE SECTION 4132 OF THE STANDARD SPECIFICATIONS FOR DESCRIPTION AND GRADATION), AND THE COST OF TRANSPORTATION AND PLACEMENT OF 8a2 AND 8a4 BARS SHALL BE INCLUDED IN THE PRICE BID FOR "STRUCTURAL CONCRETE (MISCELLANEOUS)" AND NO SEPARATE PAYMENT WILL BE MADE.  
THE CONTRACTOR IS STRONGLY ENCOURAGED TO CONSTRUCT A TEMPLATE FOR THE 8a1 BARS TO ENSURE THAT THEY ARE IN THE CORRECT LOCATIONS WHEN THE 8a2 BARS ARE PLACED IN STAGE 2. THE 8a2 BARS SHALL NOT INTERFERE WITH THE ANCHOR BOLT ASSEMBLY.  
CONTRACT ITEMS FOR OVERHEAD SIGN TRUSS FOUNDATION CONSTRUCTION ARE:  
REINFORCING STEEL, EPOXY COATED - POUNDS  
STRUCTURAL CONCRETE (MISCELLANEOUS) - CUBIC YARDS  
EXCAVATION - CUBIC YARDS OF CLASS SPECIFIED  
ELEV. A = STAGE 2 TOP OF FOUNDATION ELEVATION  
ELEV. B = TOP OF PAVEMENT ELEVATION  
ELEV. C = STAGE 1 BOTTOM OF FOUNDATION ELEVATION  
ELEV. C SHOULD BE SET SO THAT (ELEV. A - ELEV. C) IS A MULTIPLE OF 1'-0.  
D = [ELEV. B - ELEV. C]  
X = [ELEV. B - ELEV. C - 4.042 FT.]  
X SHALL NOT BE LESS THAN THICKNESS OF PAVEMENT PLUS PLYWOOD.  
ELEV. A, ELEV. B AND ELEV. C SHALL BE AS SHOWN ELSEWHERE IN THESE PLANS.

NOTE: SEE SOST-20-11 FOR STAGE 2 FOUNDATION DETAILS.

LATEST REVISION DATE 06-13 APPROVED BY BRIDGE ENGINEER <i>Thomas E. McQuinn</i>	<b>Iowa Department of Transportation</b> Highway Division	
	STANDARD DESIGN	
	<b>STEEL OVERHEAD SIGN TRUSS</b> SEPTEMBER, 2011	
<b>STAGE 1 FOUNDATION DETAILS</b>		<b>SOST-19-11</b>

50'-130' SPANS