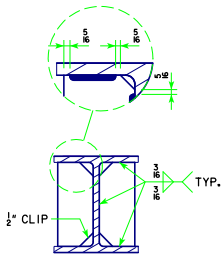
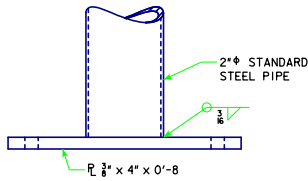


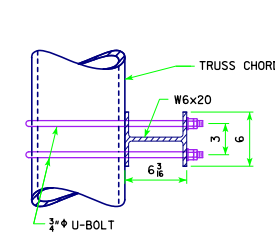
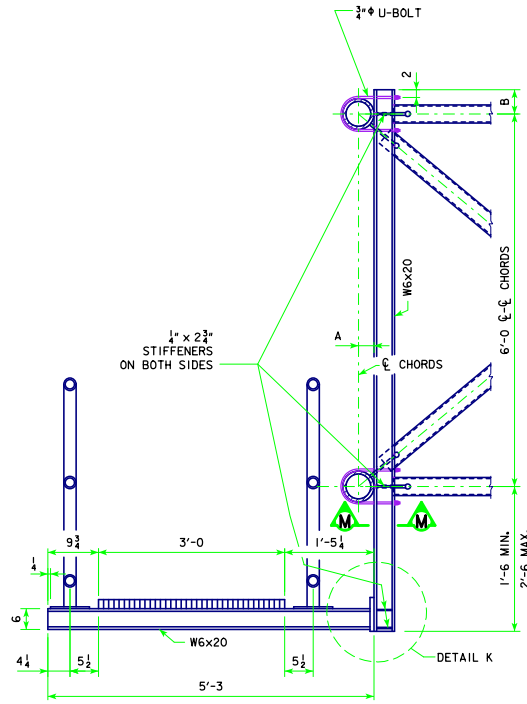
REVISION: 11-13 - CHANGED DMS ACCESS RUNWAY SUPPORT BRACKET DIMENSIONS. STEELOVERHEADS\GNTRUSS.DGN - SOST-13-11 - THIS SHEET ISSUED 03-13.



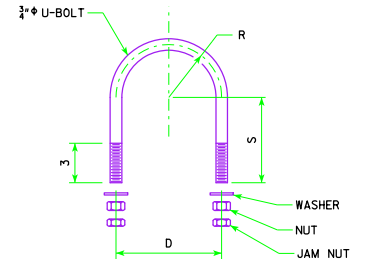
TYPICAL STIFFENER DETAIL



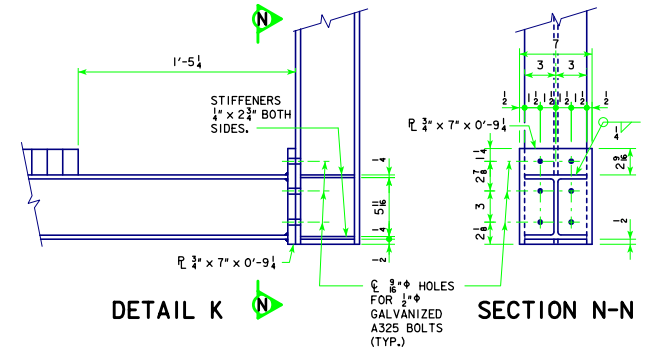
SECTION L-L
TYPICAL RUNWAY SECTION



SECTION M-M

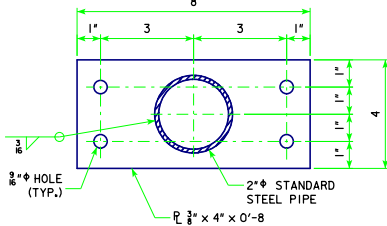


U-BOLT DETAIL

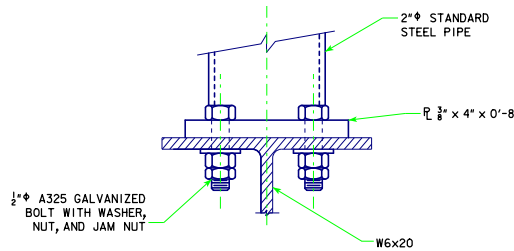


DETAIL K

SECTION N-N



HANDRAIL POST BASE PLATE



END ELEVATION OF
HANDRAIL POST BASE

DIMENSION TABLE

SPAN	TRUSS CHORD	A	B	U-BOLT DIMENSIONS		
				D	R	S
50' - 100'	5" EXTRA-STRONG STEEL PIPE	2 3/8"	5 3/8"	6 3/8"	3 3/8"	11 1/2"
105' - 130'	6" EXTRA-STRONG STEEL PIPE	3 3/8"	5 3/8"	7 1/8"	3 3/8"	12"

NOTE: SEE STANDARD SHEET SOST-12-11 FOR LOCATION OF SECTION L-L.

11-13 LATEST REVISION DATE <i>Thomas E. Mc Donald</i> APPROVED BY BRIDGE ENGINEER		
	STANDARD DESIGN STEEL OVERHEAD SIGN TRUSS SEPTEMBER, 2011	
	DMS RUNWAY DETAILS 50'-130' SPANS	SOST-13-11