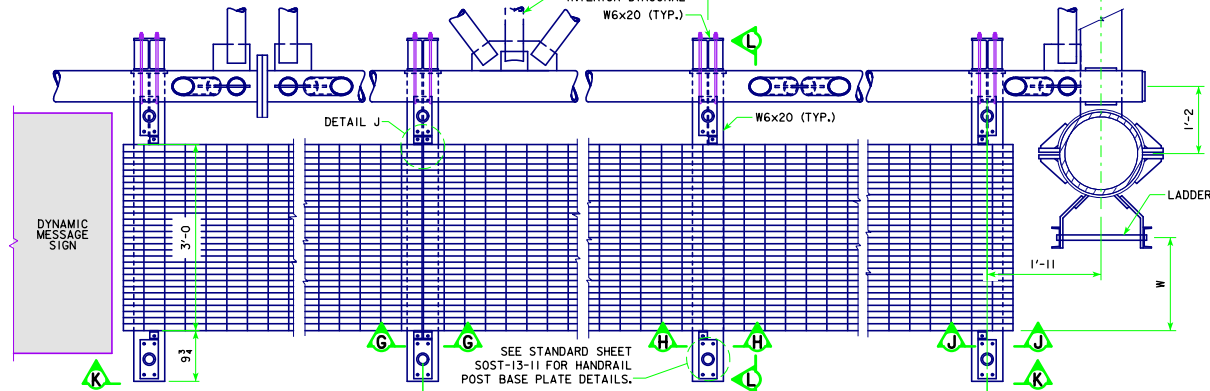


X = RUNWAY OVERHANG
 0'-5 ≤ X ≤ 1'-6

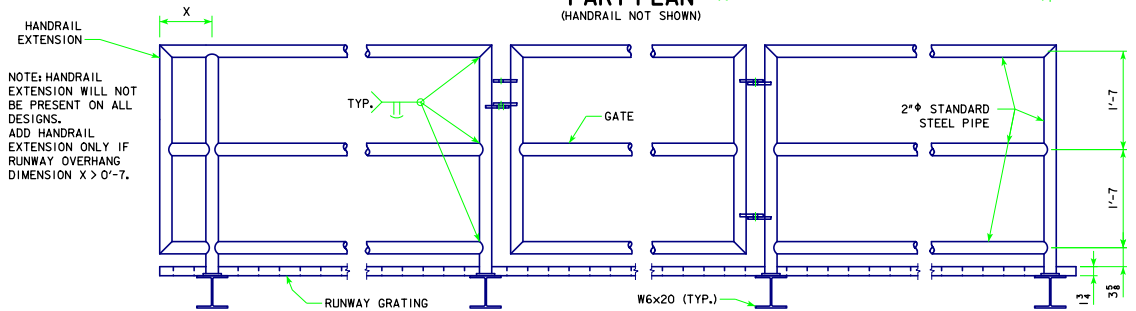
PART ELEVATION

LOOKING IN DIRECTION OF TRAFFIC
 (HANDRAIL NOT SHOWN)



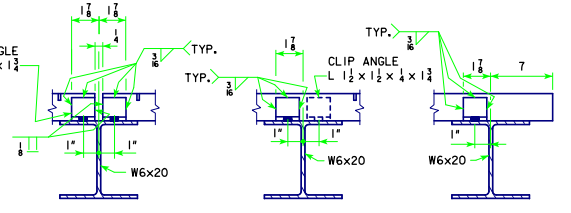
PART PLAN
 (HANDRAIL NOT SHOWN)

RUNWAY GRATING CONTINUOUS OVER NOT MORE THAN TWO SPANS
 HANDRAIL IS TO BE USED FULL LENGTH OF RUNWAY



VIEW K-K

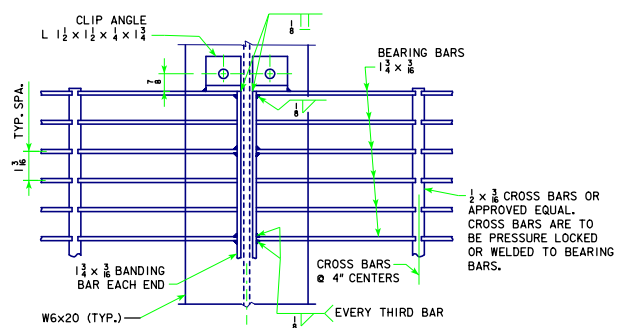
SHOWING HANDRAIL AND GATE DETAILS
 (GATE IS LOCATED ONLY ON SIDE FARTHEST FROM TRUSS)



SECTION G-G SECTION H-H SECTION J-J

NOTES:
 DRILL 3/8" Ø HOLE IN CLIP ANGLE AND 3/8" Ø HOLE IN W6x20 FOR 1/2" A325 GALVANIZED BOLT WITH WASHERS, NUT, AND JAM NUT. ADJUST CLIP SO GRATING BEARS ON BEAM.
 THE GALVANIZED STEEL BAR GRATING INCLUDING BEARING BAR, CROSS BARS, AND BANDING BARS SHALL COMPLY WITH THE REQUIREMENTS OF ASTM A1011 TYPE 2.

DIMENSION TABLE		
SPAN	TRUSS SUPPORT POST	W
50' - 100'	HSS 14.000 x 0.500	1'-10 1/4"
105' - 130'	HSS 16.000 x 0.500	1'-8 11/16"



DETAIL J

NOTE: SEE STANDARD SHEET SOST-13-11 FOR SECTION L-L.
 NOTE: SEE STANDARD SHEET SOST-15-11 FOR LADDER DETAILS.

11-13 LATEST REVISION DATE <i>Thomas E. McQuinn</i> APPROVED BY BRIDGE ENGINEER		
	STANDARD DESIGN STEEL OVERHEAD SIGN TRUSS SEPTEMBER, 2011	
	DMS RUNWAY DETAILS	SOST-12-11

REVISION: 11-13 - CHANGED TABLE VALUES OF DIMENSION "W".
 STEELOVERHEADSIGNTRUSS.DGN = SOST-12-11 - THIS SHEET ISSUED 03-13.