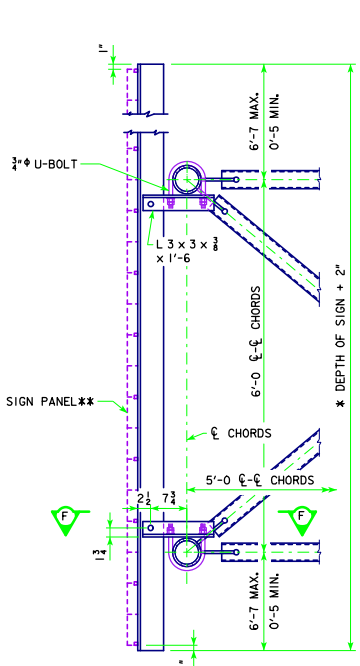
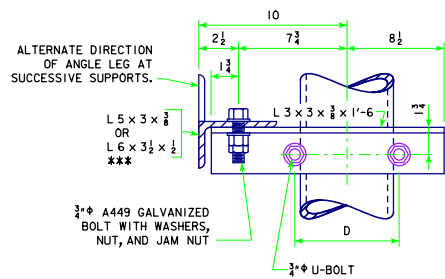


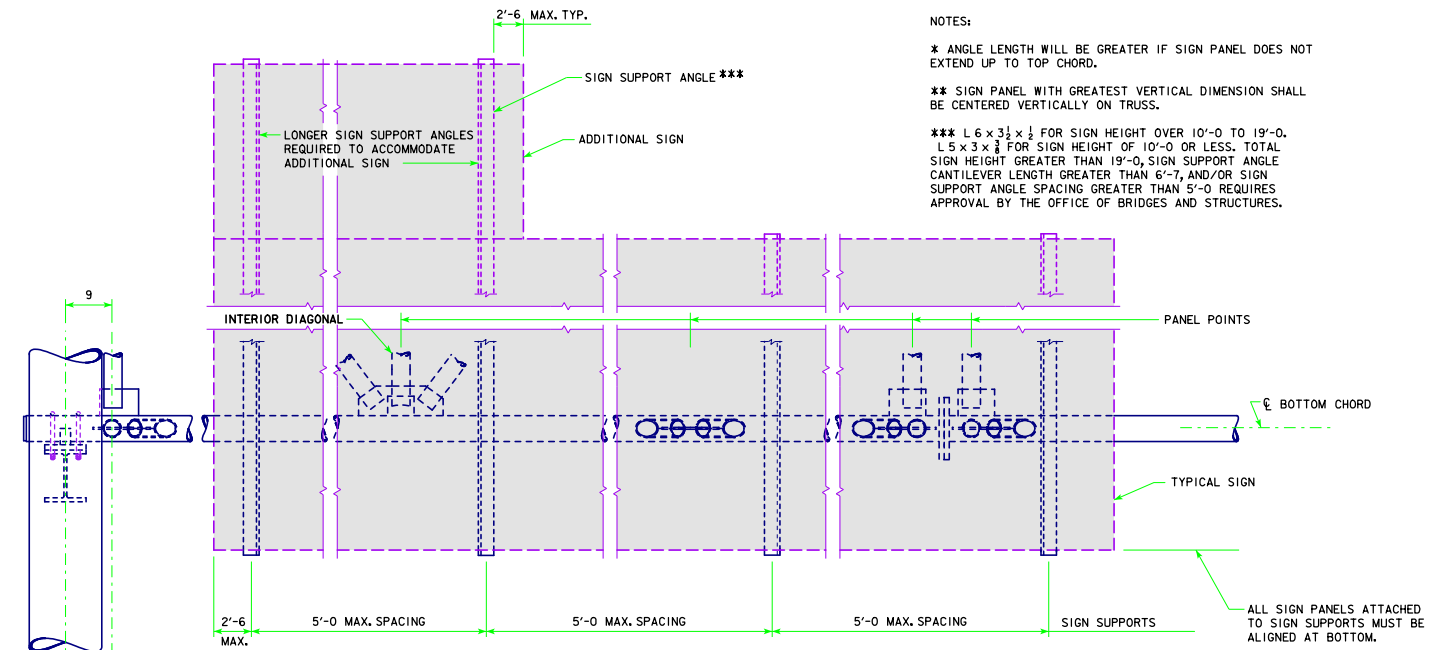
REVISION: 11-13 - CHANGED SIGN SUPPORT ANGLE CANTILEVER LENGTH RESTRICTIONS AND U-BOLT BEND DIAMETER. MODIFIED NOTES. CHANGED GALV. BOLT AND HARDWARE TO A449 INSTEAD OF A325.
 STEEL OVERHEAD SIGN TRUSS - SOST-11-11 - THIS SHEET ISSUED 09-11



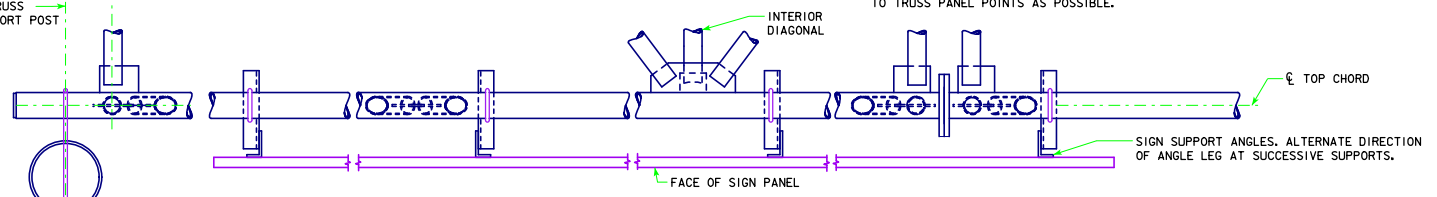
TYPICAL SIGN PANEL SECTION



SECTION F-F



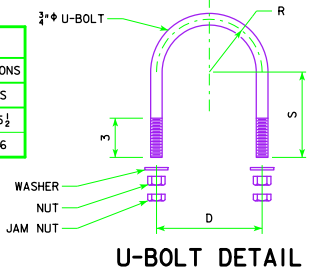
PART ELEVATION



PART PLAN

SPAN	TRUSS CHORD	U-BOLT DIMENSIONS		
		D	R	S
50' - 100'	5" EXTRA-STRONG STEEL PIPE	6 7/16	3 3/2	5 1/2
105' - 130'	6" EXTRA-STRONG STEEL PIPE	7 1/2	3 3/4	6

U-BOLT DIMENSION TABLE



U-BOLT DETAIL

NOTES:

- * ANGLE LENGTH WILL BE GREATER IF SIGN PANEL DOES NOT EXTEND UP TO TOP CHORD.
- ** SIGN PANEL WITH GREATEST VERTICAL DIMENSION SHALL BE CENTERED VERTICALLY ON TRUSS.
- *** L 6 x 3 1/2 x 1/2 FOR SIGN HEIGHT OVER 10'-0 TO 19'-0. L 5 x 3 x 3/8 FOR SIGN HEIGHT OF 10'-0 OR LESS. TOTAL SIGN HEIGHT GREATER THAN 19'-0, SIGN SUPPORT ANGLE CANTILEVER LENGTH GREATER THAN 6'-7, AND/OR SIGN SUPPORT ANGLE SPACING GREATER THAN 5'-0 REQUIRES APPROVAL BY THE OFFICE OF BRIDGES AND STRUCTURES.

NOTE: LOCATE SIGN SUPPORTS AS CLOSE TO TRUSS PANEL POINTS AS POSSIBLE.

11-13 LATEST REVISION DATE <i>Thomas E. McQuinn</i> APPROVED BY BRIDGE ENGINEER		
	STANDARD DESIGN STEEL OVERHEAD SIGN TRUSS SEPTEMBER, 2011	
	SIGN ATTACHMENT DETAILS 50'-130' SPANS	SOST-11-11