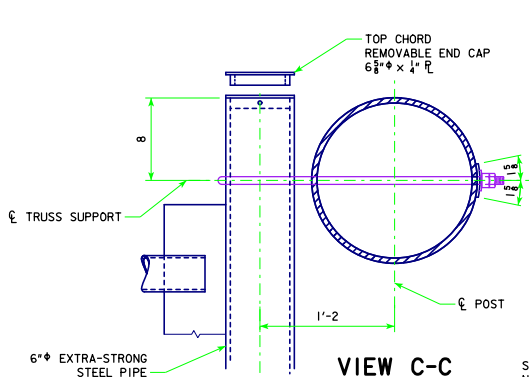
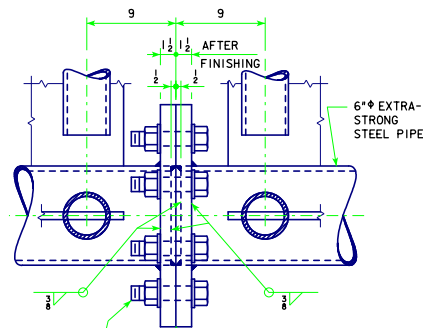
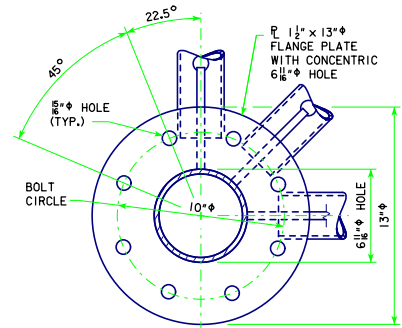


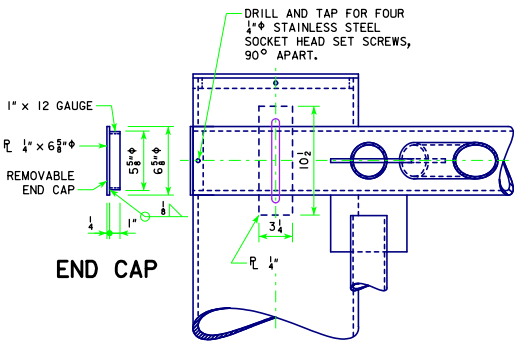
POST TOP DETAIL



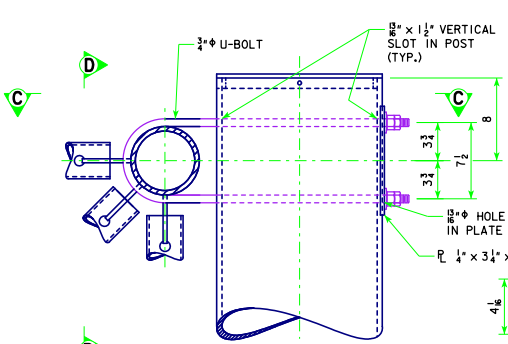
VIEW C-C



CHORD SPLICE



END CAP



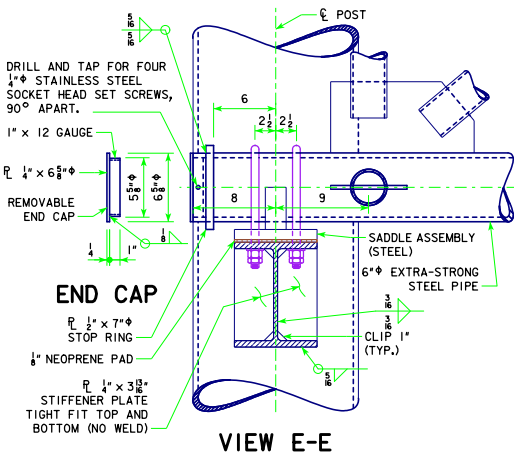
DETAIL F TOP CHORD

SOME HIDDEN LINES NOT SHOWN FOR CLARITY

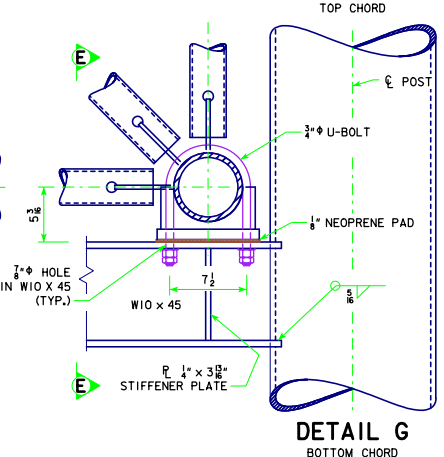
7/8 INCH X 4 1/4 INCH A325 GALVANIZED BOLT WITH WASHERS AND NUT (TYP.), 32 BOLTS, 64 WASHERS, AND 32 NUTS REQUIRED PER TRUSS SPLICE. PROVIDE A WASHER UNDER EACH BOLT HEAD AND EACH NUT. TENSION GALVANIZED STEEL FASTENERS BY TURN-OF-NUT METHOD.

IF NECESSARY, PLANE ABUTTING FACES TO ENSURE COMPLETE CONTACT.

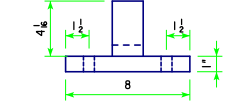
NOTE: SECURE PROPER ALIGNMENT AFTER FINISHING, THEN WELD FLANGE PLATES TO CHORD MEMBERS.



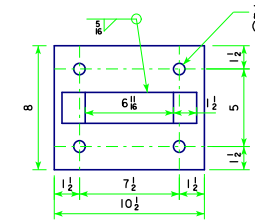
VIEW E-E



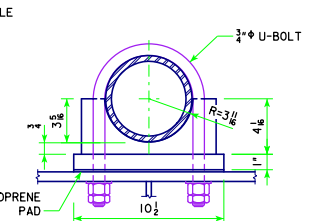
DETAIL G BOTTOM CHORD



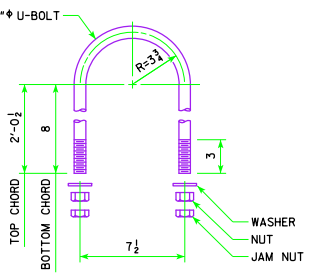
SADDLE END VIEW



SADDLE PLAN VIEW



SADDLE SIDE VIEW



U-BOLT DETAIL

NOTE: SEE STANDARD SHEET SOST-07-11 FOR LOCATION OF DETAILS F AND G.

LATEST REVISION DATE 11-13 APPROVED BY BRIDGE ENGINEER 		
	STANDARD DESIGN <b>STEEL OVERHEAD SIGN TRUSS</b> SEPTEMBER, 2011	
	TRUSS SUPPORT AND CHORD SPLICE DETAILS 105'-130' SPANS	<b>SOST-10-11</b>

REVISION 11-13 - CHANGED U-BOLT BEND DIAMETER AND SADDLE DIMENSIONS. SEE OVERHEAD SIGN TRUSS SOST-10-11 THIS SHEET ISSUED 09-11-11.