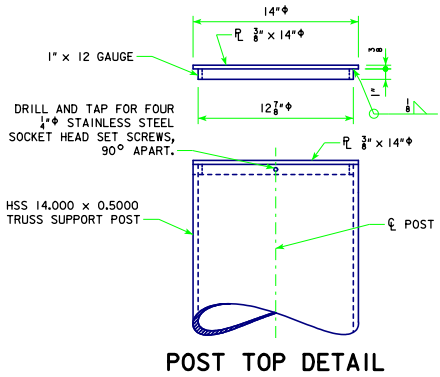
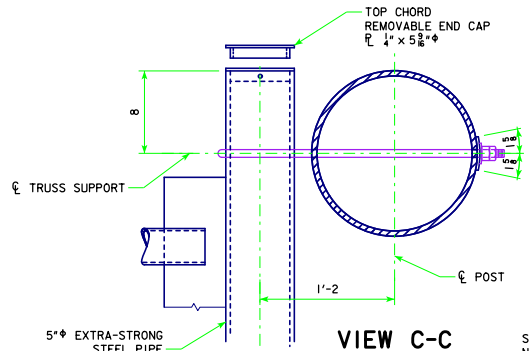


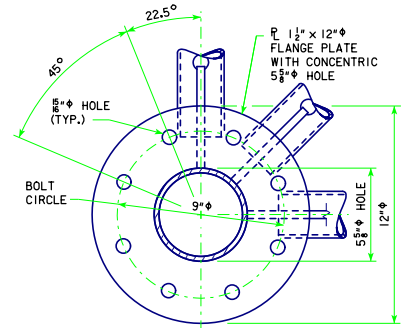
REVISION: 11-13 - CHANGED U-BOLT BEND DIAMETER AND SADDLE DIMENSIONS. STEEL OVERHEAD SIGN TRUSS.DGN - SOST-09-11 - THIS SHEET ISSUED 09-11.



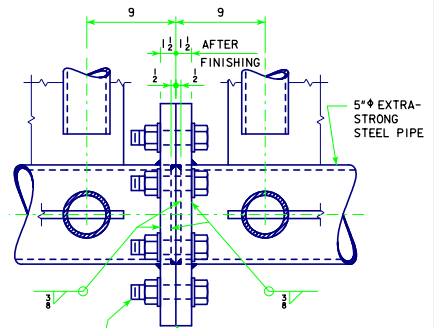
POST TOP DETAIL



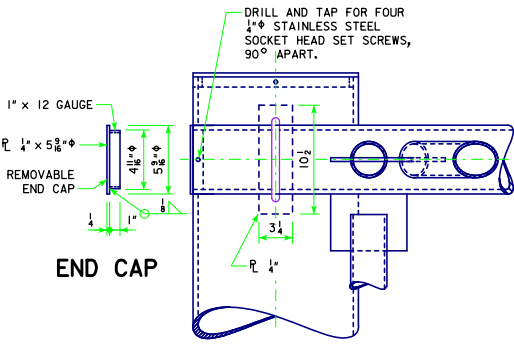
VIEW C-C



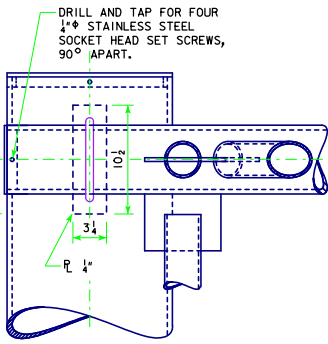
CHORD SPLICE



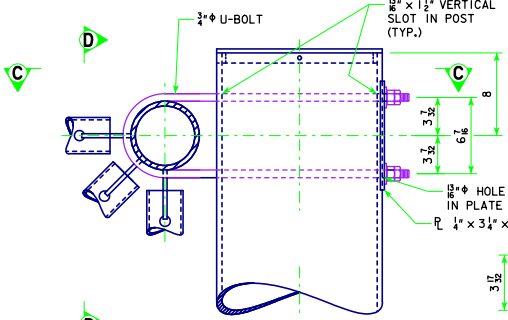
IF NECESSARY, PLANE ABUTTING FACES TO ENSURE COMPLETE CONTACT.
NOTE: SECURE PROPER ALIGNMENT AFTER FINISHING, THEN WELD FLANGE PLATES TO CHORD MEMBERS.



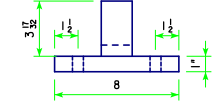
END CAP



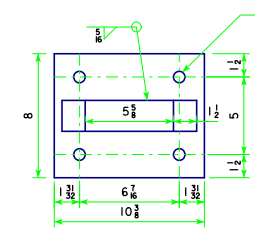
VIEW D-D



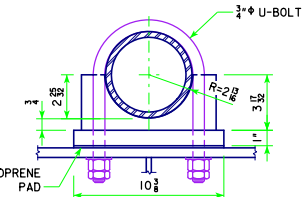
DETAIL F
TOP CHORD



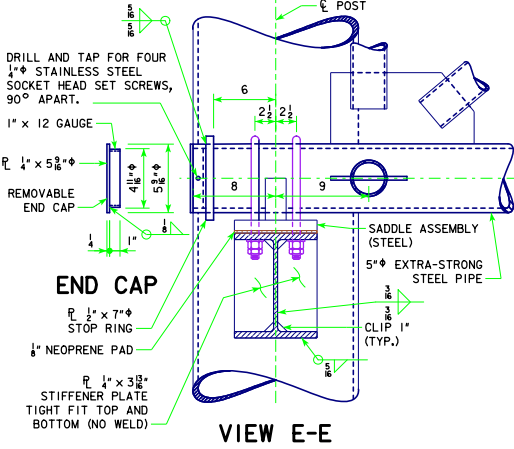
SADDLE END VIEW



SADDLE PLAN VIEW

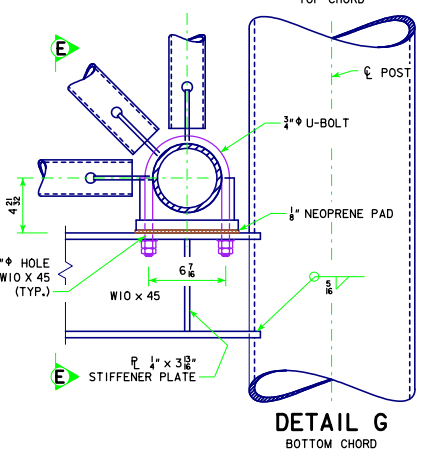


SADDLE SIDE VIEW

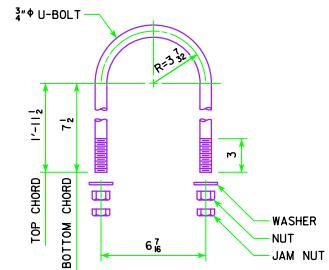


END CAP

VIEW E-E



DETAIL G
BOTTOM CHORD



U-BOLT DETAIL

NOTE: SEE STANDARD SHEET SOST-06-11 FOR LOCATION OF DETAILS F AND G.

LATEST REVISION DATE 11-13 Approved by Bridge Engineer [Signature]	Iowa Department of Transportation Highway Division STANDARD DESIGN	
	STEEL OVERHEAD SIGN TRUSS SEPTEMBER, 2011	
	TRUSS SUPPORT AND CHORD SPLICE DETAILS 50'-100' SPANS	SOST-09-11