

See Sheets 2 and 4 for Details

See Sheets 3 and 4 for Details

### OVERVIEW OF CROSSOVER

Place Two-Way Traffic symbol and DO NOT PASS signs alternately on both sides of the roadway at a maximum of one-half mile intervals for both directions of travel. Always have signs in sight of motorists.


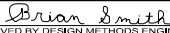
When the Average Daily Traffic (ADT) exceeds 20,000 vehicles per day or when a traffic queue extends beyond the advanced signing, place RIGHT/LEFT LANE CLOSED 4 MILES and RIGHT/LEFT LANE CLOSED 2 MILES signs (W20-5) on both sides of the roadway 4 miles and 2 miles in advance of the lane closure, respectively, as appropriate.

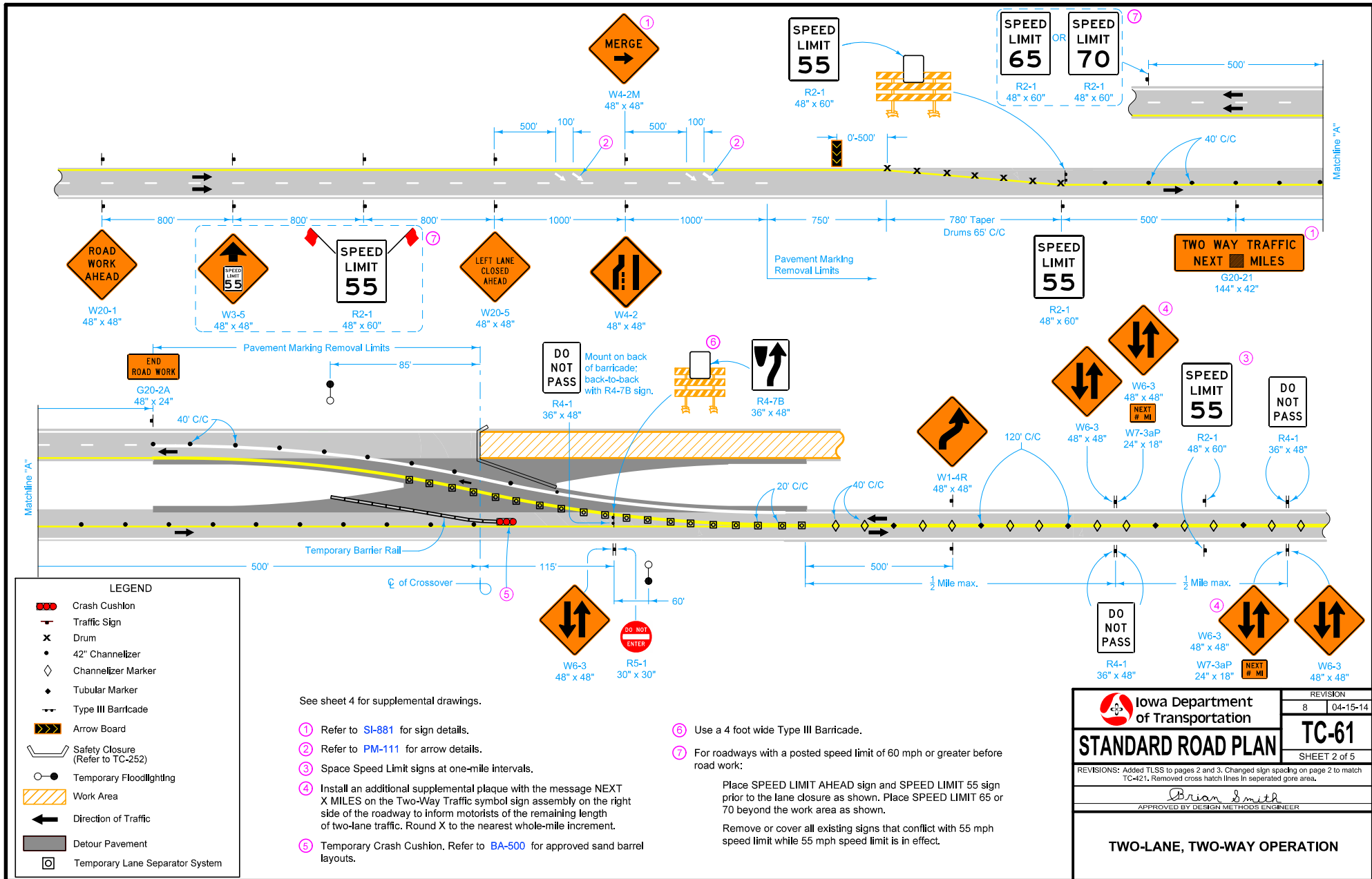
Possible Contract Items:

- |                             |                                 |
|-----------------------------|---------------------------------|
| Painted Symbols and Legends | Temporary Barrier Rail          |
| Pavement Marking Items      | Temporary Crash Cushions        |
| Pavement Marking Removed    | Temporary Floodlighting         |
| Safety Closures             | Temporary Lane Separator System |
|                             | Traffic Control                 |

Possible Tabulations:

108-13A, 108-22, 108-27, 108-29, 108-30, 108-33, 108-35

 <b>Iowa Department of Transportation</b>	REVISION
	8   04-15-14
<b>STANDARD ROAD PLAN</b>	<b>TC-61</b>
SHEET 1 of 5	
<small>REVISIONS: Added TLSS to pages 2 and 3. Changed sign spacing on page 2 to match TC-421. Removed cross hatch lines in separated gore area.</small>	
 <small>APPROVED BY DESIGN METHODS ENGINEER</small>	
<b>TWO-LANE, TWO-WAY OPERATION</b>	



See sheet 4 for supplemental drawings.

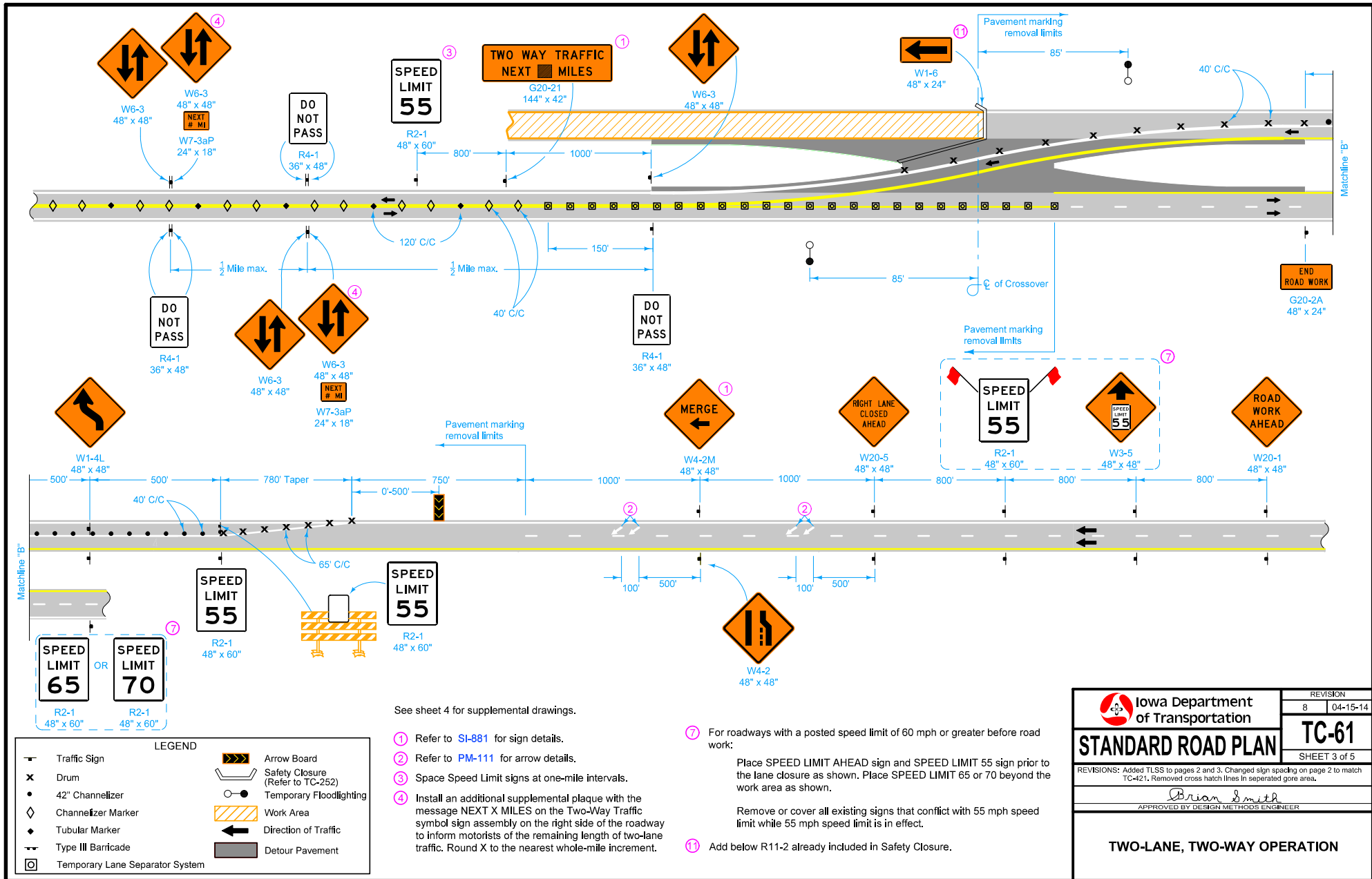
- ① Refer to [SI-881](#) for sign details.
- ② Refer to [PM-111](#) for arrow details.
- ③ Space Speed Limit signs at one-mile intervals.
- ④ Install an additional supplemental plaque with the message NEXT X MILES on the Two-Way Traffic symbol sign assembly on the right side of the roadway to inform motorists of the remaining length of two-lane traffic. Round X to the nearest whole-mile increment.
- ⑤ Temporary Crash Cushion. Refer to [BA-500](#) for approved sand barrel layouts.

- ⑥ Use a 4 foot wide Type III Barricade.
- ⑦ For roadways with a posted speed limit of 60 mph or greater before road work:

Place SPEED LIMIT AHEAD sign and SPEED LIMIT 55 sign prior to the lane closure as shown. Place SPEED LIMIT 65 or 70 beyond the work area as shown.

Remove or cover all existing signs that conflict with 55 mph speed limit while 55 mph speed limit is in effect.

 Iowa Department of Transportation	REVISION 8 04-15-14
	<b>STANDARD ROAD PLAN</b> <b>TC-61</b>
	SHEET 2 of 5
REVISIONS: Added TLS to pages 2 and 3. Changed sign spacing on page 2 to match TC-421. Removed cross hatch lines in separated gore area.	
 APPROVED BY DESIGN METHODS ENGINEER	
<b>TWO-LANE, TWO-WAY OPERATION</b>	

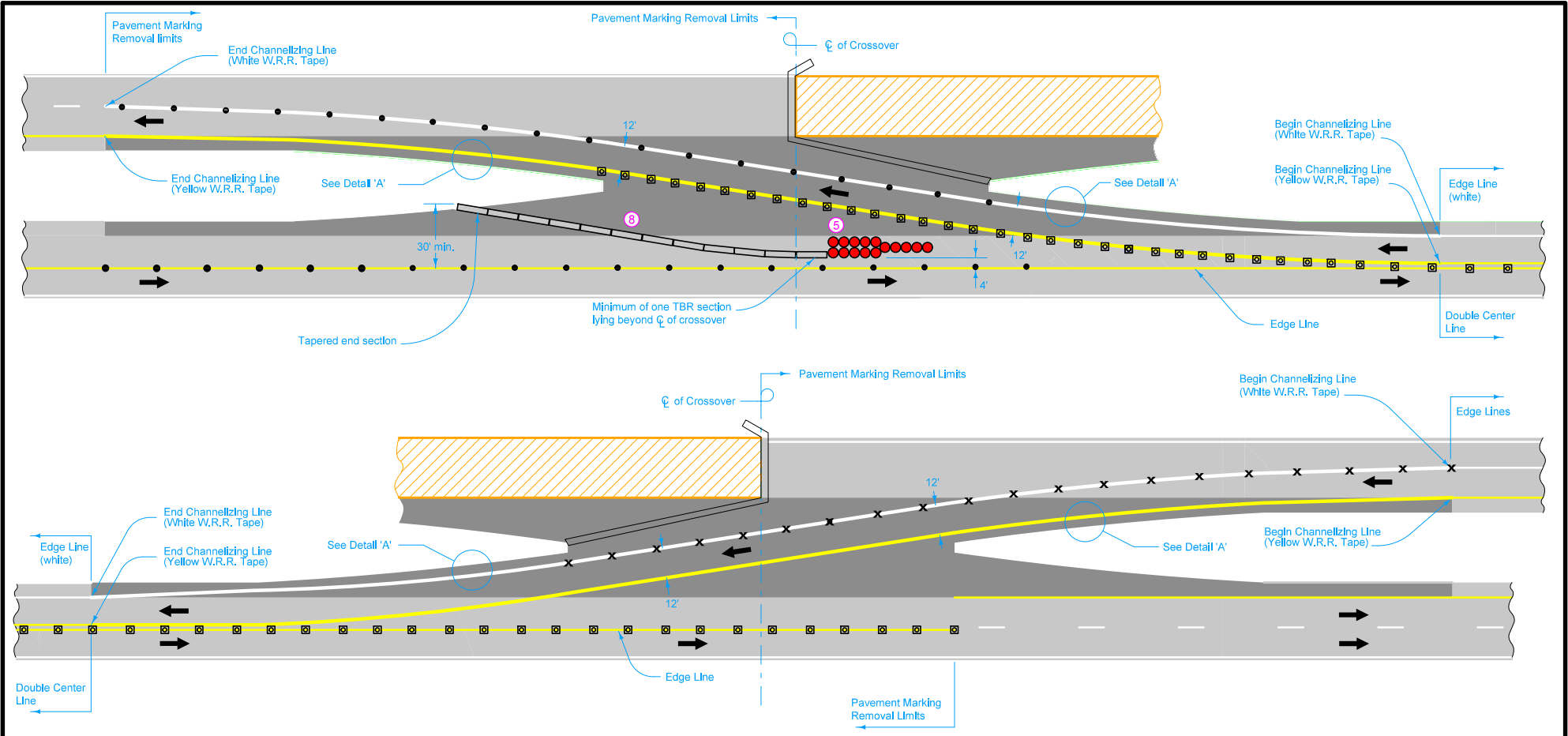


See sheet 4 for supplemental drawings.

- ① Refer to **SI-881** for sign details.
- ② Refer to **PM-111** for arrow details.
- ③ Space Speed Limit signs at one-mile intervals.
- ④ Install an additional supplemental plaque with the message **NEXT X MILES** on the Two-Way Traffic symbol sign assembly on the right side of the roadway to inform motorists of the remaining length of two-lane traffic. Round X to the nearest whole-mile increment.

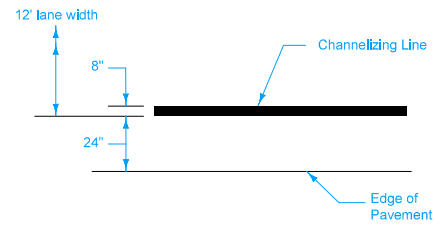
- ⑦ For roadways with a posted speed limit of 60 mph or greater before road work:  
Place **SPEED LIMIT AHEAD** sign and **SPEED LIMIT 55** sign prior to the lane closure as shown. Place **SPEED LIMIT 65** or **70** beyond the work area as shown.
- Remove or cover all existing signs that conflict with 55 mph speed limit while 55 mph speed limit is in effect.
- ⑪ Add below R11-2 already included in Safety Closure.

 Iowa Department of Transportation	REVISION 8    04-15-14
	<b>STANDARD ROAD PLAN</b> <b>TC-61</b>
	SHEET 3 of 5 <small>REVISIONS: Added TLS to pages 2 and 3. Changed sign spacing on page 2 to match TC-421. Removed cross hatch lines in separated gore area.</small>
 APPROVED BY DESIGN METHODS ENGINEER	
<b>TWO-LANE, TWO-WAY OPERATION</b>	



**LEGEND**

- Drum
- 42" Channelizer
- Crash Cushion
- Work Area
- Detour Pavement
- Safety Closure (Refer to TC-252)



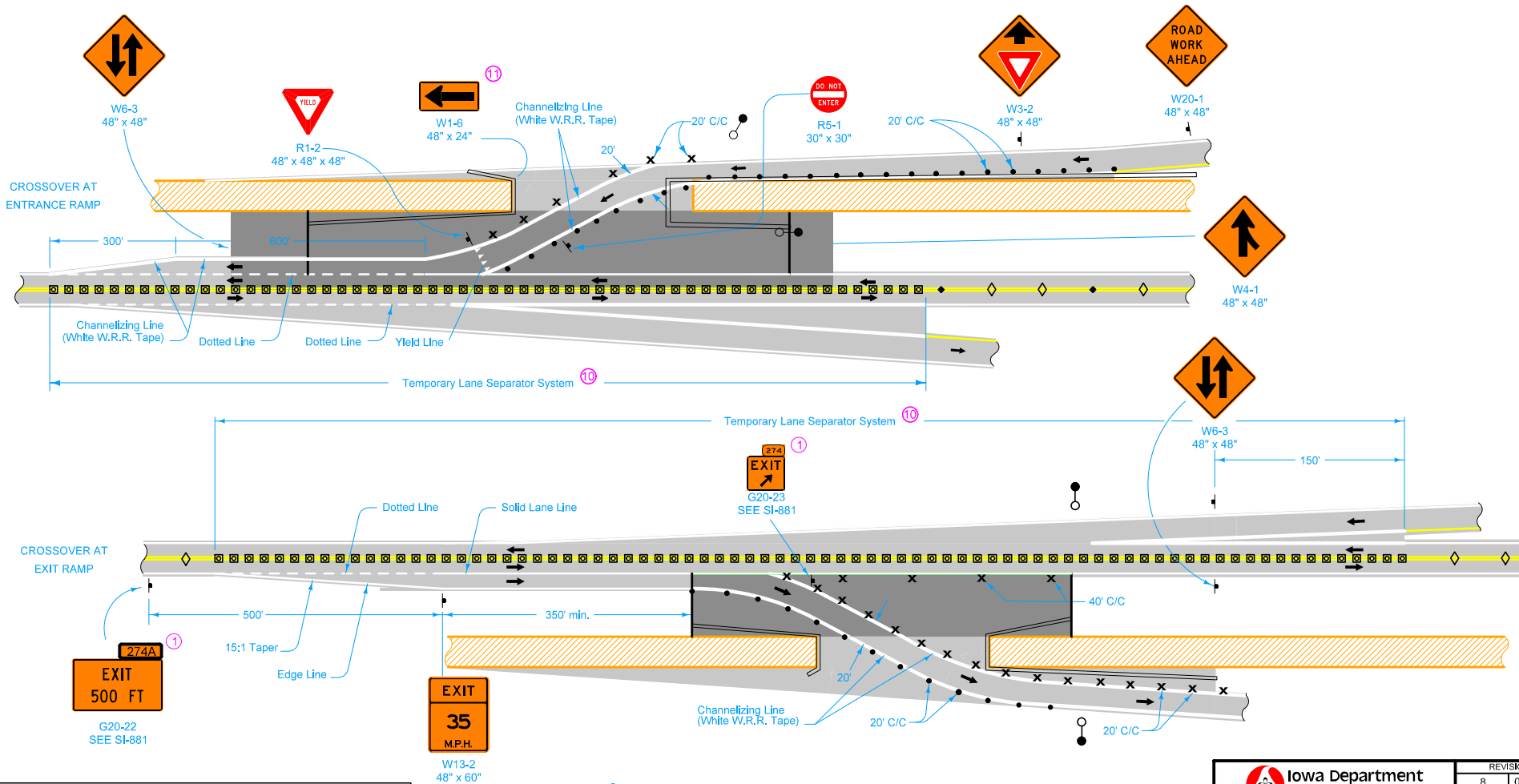
DETAIL 'A'

SUPPLEMENTAL CROSSOVER DRAWINGS <sup>9</sup>

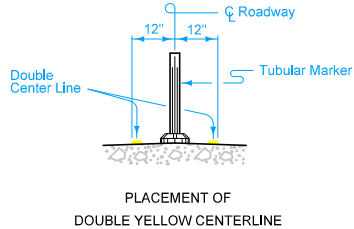
- <sup>5</sup> Temporary Crash Cushion. Refer to BA-500 for approved sand barrel layouts.
- <sup>8</sup> Number of TBR sections varies based on dimensions of Detour Pavement. Refer to BA-401 and 108-33 for TBR information.
- <sup>9</sup> Details shown hereon are intended to provide additional information to the requirements shown on sheets 2 and 3.

 <b>Iowa Department of Transportation</b>	REVISION 8    04-15-14
	<b>TC-61</b>
	SHEET 4 of 5
REVISIONS: Added TLS to pages 2 and 3. Changed sign spacing on page 2 to match TC-421. Removed cross hatch lines in separated gore area.	
 APPROVED BY DESIGN METHODS ENGINEER	
TWO-LANE, TWO-WAY OPERATION	

RAMP LOCATIONS



LEGEND	
	Traffic Sign
	42" Channelizer
	Drum
	Channelizer Marker
	Tubular Marker
	Temporary Floodlighting
	Temporary Lane Separator System
	Work Area
	Detour Pavement
	Direction of Traffic
	Safety Closure (Refer to TC-252)



- ① Refer to SI-881 for sign details.
- ⑩ Place TLSS from start of ramp gore or start of full width decel lane to end of temporary ramp crossover pavement or end of ramp gore.
- ⑪ Add below R11-2 already included in Safety Closure.

<p>Iowa Department of Transportation</p> <p><b>STANDARD ROAD PLAN</b></p> <p>REVISIONS: Added TLSS to pages 2 and 3. Changed sign spacing on page 2 to match TC-421. Removed cross hatch lines in separated gore area.</p> <p style="text-align: right;"><i>Brian Smith</i> APPROVED BY DESIGN METHODS ENGINEER</p>	REVISION 8 04-15-14
	TC-61
	SHEET 5 of 5
TWO-LANE, TWO-WAY OPERATION	