

OUTSIDE EDGELINE OR LANELINE - DIVIDED OR UNDIVIDED

Equip all vehicles with an amber revolving light or amber strobe light.

Possible Contract Item:
Traffic Control

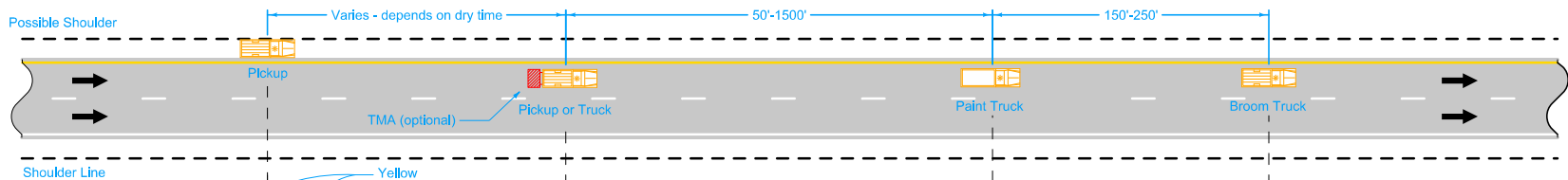
- ① Optional Fluorescent Yellow Green (FYG) sign background may be used.
- ② This arrow board may be operated in a four-corner caution mode.
- ③ A vehicle mounted Changeable Message Sign (CMS) may be used in lieu of this sign.
- ④ Refer to [SI-881](#) for sign details.

LEGEND

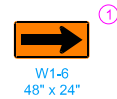
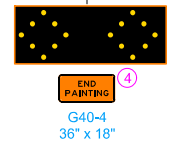
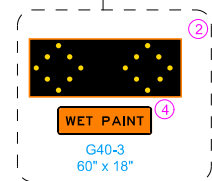
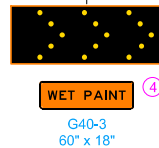
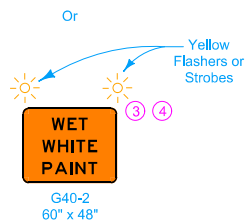
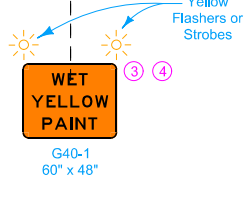
← Direction of Traffic

▨ Truck-Mounted Attenuator (TMA)

<p>Iowa Department of Transportation</p> <p>STANDARD ROAD PLAN</p> <p>REVISIONS: Modified note concerning amber Vehicle Warning Light.</p> <p><i>Deanna Macfild</i> APPROVED BY DESIGN METHODS ENGINEER</p> <p>PAVEMENT MARKING OPERATIONS</p>	<p>REVISION</p> <p>4 04-16-13</p>
	<p>TC-433</p> <p>SHEET 1 of 3</p>



SIGNS FACING TRAFFIC
APPROACHING FROM
THE REAR



INSIDE EDGE LINE OR LANE LINE - DIVIDED

LEGEND

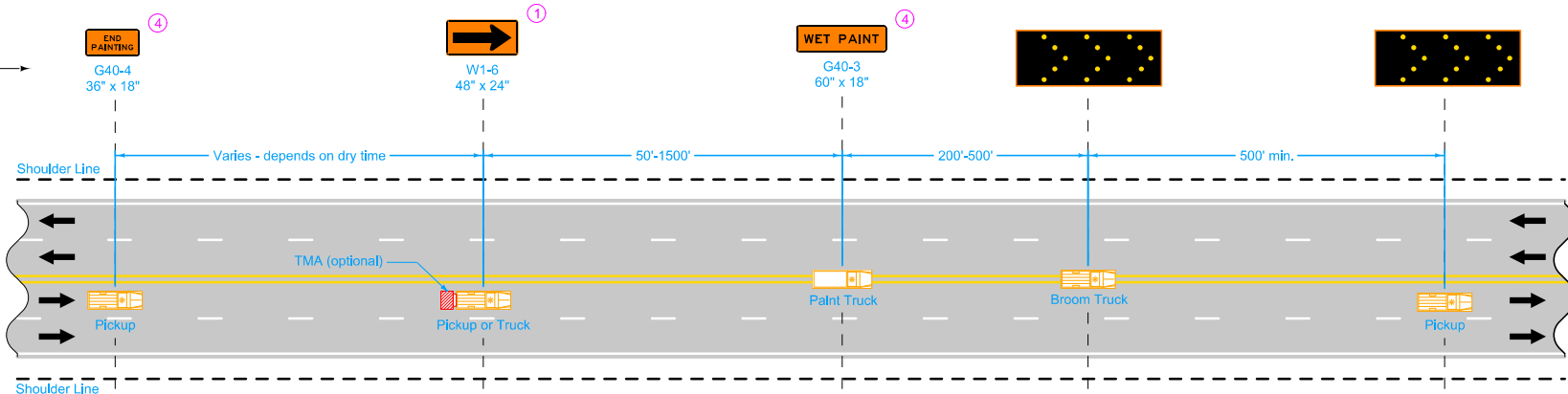
← Direction of Traffic

▨ Truck-Mounted Attenuator (TMA)

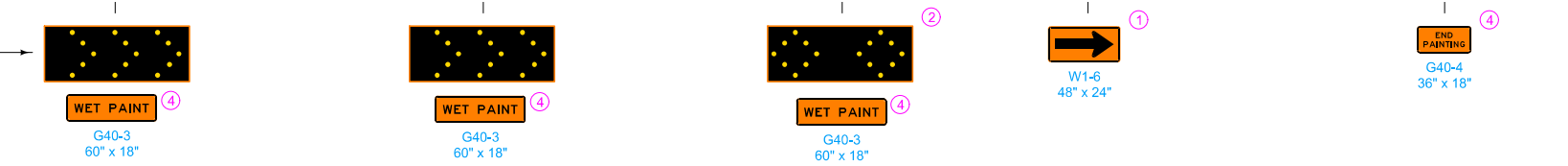
- ① Optional Fluorescent Yellow Green (FYG) sign background may be used.
- ② This arrow board may be operated in a four-corner caution mode.
- ③ A vehicle mounted Changeable Message Sign (CMS) may be used in lieu of this sign.
- ④ Refer to [SI-881](#) for sign details.

<p>Iowa Department of Transportation</p> <p>STANDARD ROAD PLAN</p> <p>REVISIONS: Modified note concerning amber Vehicle Warning Light.</p> <p><i>Deanna Macfild</i> APPROVED BY DESIGN METHODS ENGINEER</p> <p>PAVEMENT MARKING OPERATIONS</p>	<p>REVISION</p> <p>4 04-16-13</p>
	<p>TC-433</p> <p>SHEET 2 of 3</p>

SIGNS FACING OPPOSING TRAFFIC



SIGNS FACING TRAFFIC APPROACHING FROM THE REAR



CENTERLINE - UNDIVIDED ONLY

LEGEND

- ← Direction of Traffic
- Truck-Mounted Attenuator (TMA)

- ① Optional Fluorescent Yellow Green (FYG) sign background may be used.
- ② This arrow board may be operated in a four-corner caution mode.
- ④ Refer to [SI-881](#) for sign details.

Iowa Department of Transportation	REVISION 4 04-16-13
	TC-433
SHEET 3 of 3	
REVISIONS: Modified note concerning amber Vehicle Warning Light.	
APPROVED BY DESIGN METHODS ENGINEER	
PAVEMENT MARKING OPERATIONS	