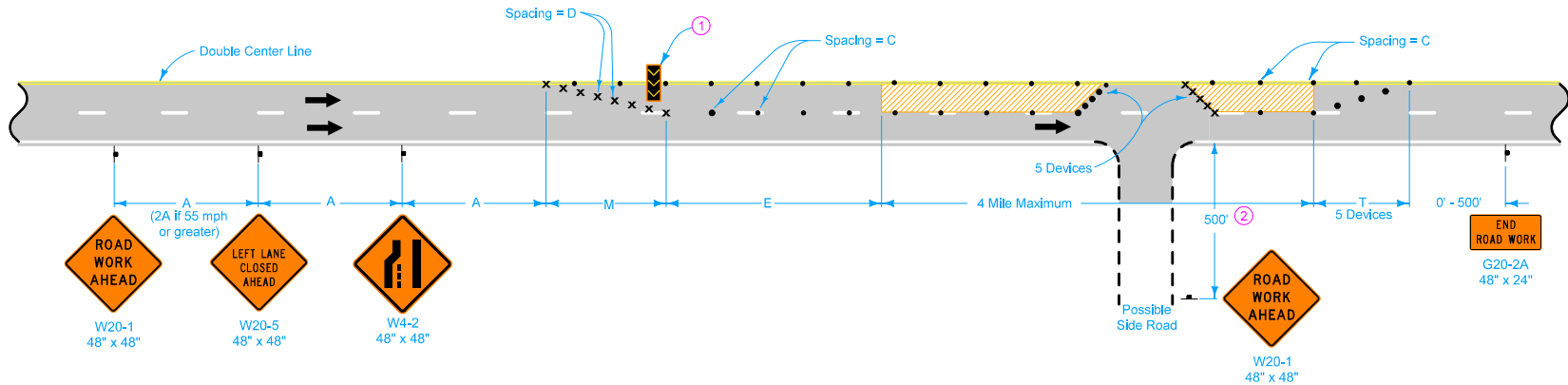
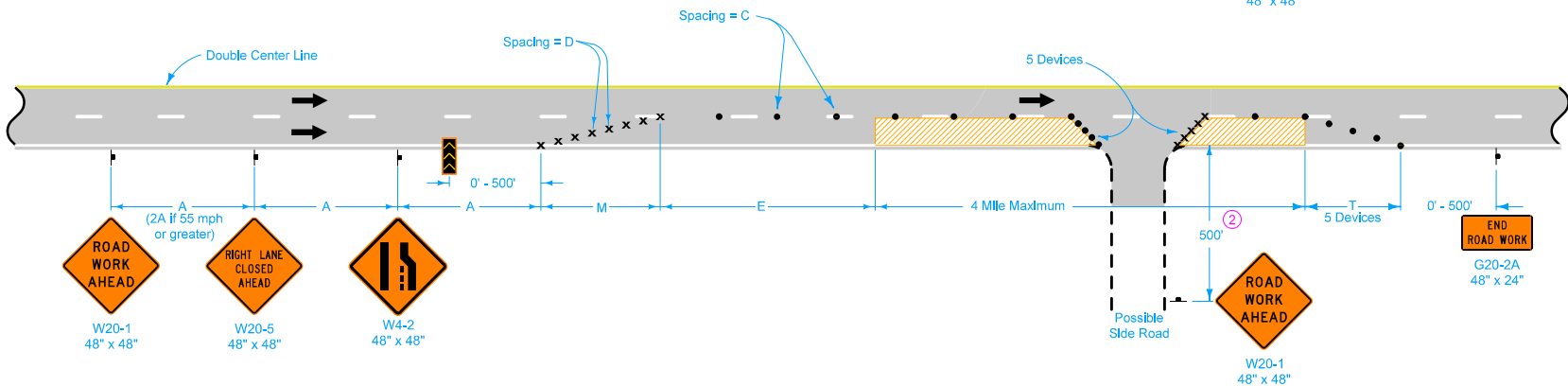


LEFT LANE CLOSURE



RIGHT LANE CLOSURE



LEGEND

- Traffic Sign
- Drum
- 42" Channelizer
- Arrow Board
- Work Area
- Direction of Traffic

SPEED LIMIT (mph)	A	C	D	E	M	T
35 or less	250'	40'	35'	0'-200'	245'	50'
40	500'	80'	40'	0'-300'	320'	50'
45	700'	80'	45'	0'-400'	630'	100'
50	700'	80'	45'	400'	630'	100'
55 - 60	1000'	100'	55'	600'	770'	100'

Where there is a lane line drop-off or rise, do not allow traffic to cross over the drop-off or rise, except for ramp locations where a BUMP (W8-1) sign is placed.

Lane line drop-offs greater than a nominal 4 inches are not allowed during non-working hours.

- ① Place arrow board within the closed lane behind the drums and as close to the beginning of the taper as practical.
- ② Where side road speed limit is 40 mph or less, a distance of 200 feet is allowed.

Possible Contract Item:

Traffic Control

	REVISION
	6 10-15-13
STANDARD ROAD PLAN	TC-419
REVISIONS: Clarified lane line drop-off in the general notes.	
 APPROVED BY DESIGN METHODS ENGINEER	
LANE CLOSURE ON UNDIVIDED HIGHWAY	
SHEET 1 of 1	