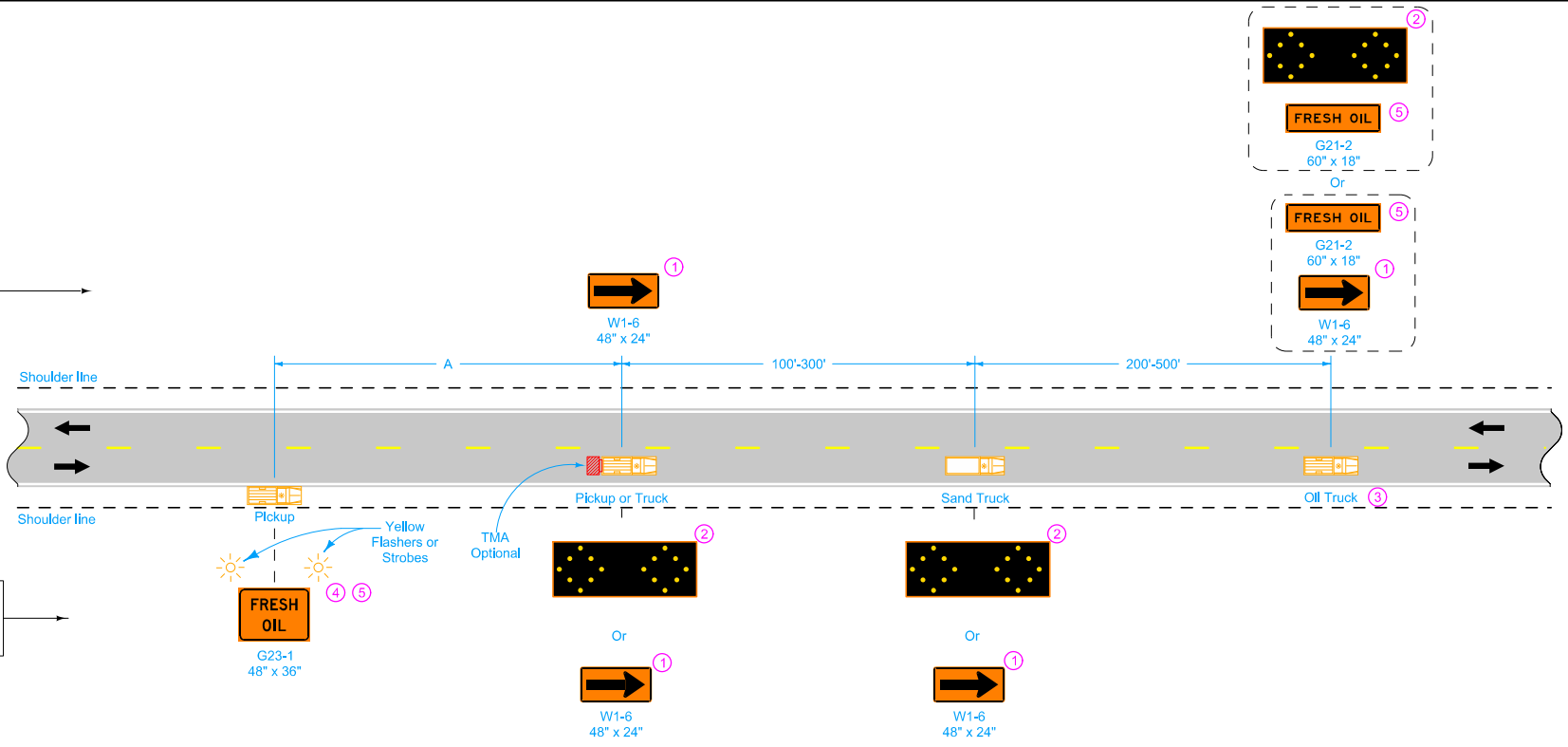


SIGNS FACING OPPOSING TRAFFIC

SIGNS FACING TRAFFIC APPROACHING FROM THE REAR



VEHICLES NOT STRADDLING CENTERLINE

Equip all vehicles with an amber revolving light or amber strobe light.

- ① Optional Fluorescent Yellow Green (FYG) sign background may be used.
- ② This arrow display may be operated in a four-corner caution mode.
- ③ Move this vehicle to the shoulder to accommodate passing traffic.
- ④ A vehicle mounted Changeable Message Sign (CMS) may be used in lieu of this sign.
- ⑤ Refer to SI-881 for sign details.

Possible Contract Item:
Traffic Control

LEGEND

← Direction of Traffic

▭ Truck-Mounted Attenuator (TMA)

SPEED LIMIT (mph)	A min.
25 or less	200'
30 - 35	300'
40 - 45	500'
50 or greater	1000'

Iowa Department of Transportation

STANDARD ROAD PLAN

REVISIONS: New.

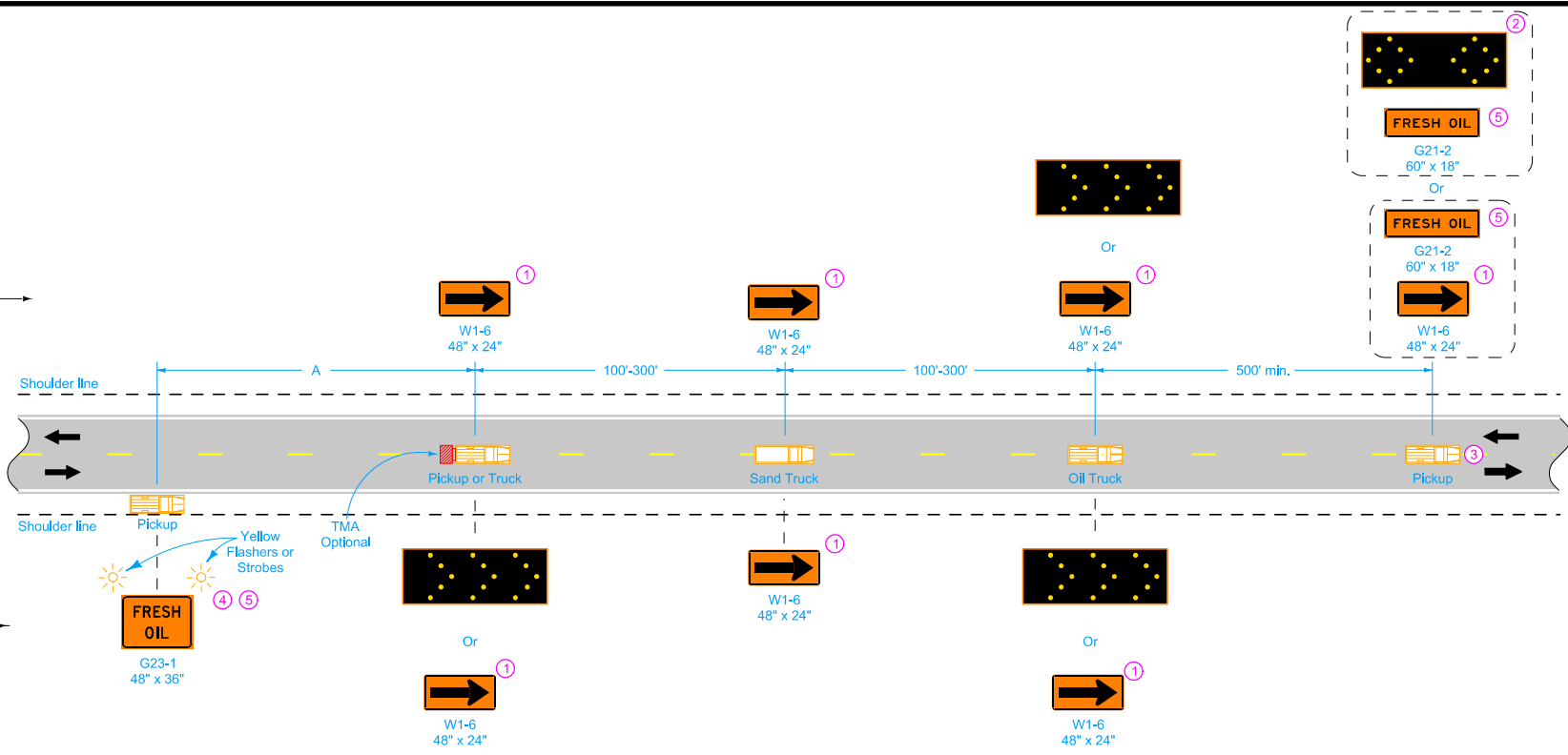
Deanna Macfild
APPROVED BY DESIGN METHODS ENGINEER

STRIP SEALING OPERATIONS

REVISION	NEW	04-16-13
TC-234		SHEET 1 of 2

SIGNS FACING OPPOSING TRAFFIC

SIGNS FACING TRAFFIC APPROACHING FROM THE REAR



VEHICLES STRADDLING CENTERLINE

- ① Optional Fluorescent Yellow Green (FYG) sign background may be used.
- ② This arrow display may be operated in a four-corner caution mode.
- ③ Move this vehicle to the shoulder to accommodate passing traffic.
- ④ A vehicle mounted Changeable Message Sign (CMS) may be used in lieu of this sign.
- ⑤ Refer to SI-881 for sign details.

LEGEND

← Direction of Traffic

▭ Truck-Mounted Attenuator (TMA)

SPEED LIMIT (mph)	A min.
25 or less	200'
30 - 35	300'
40 - 45	500'
50 or greater	1000'

<p>Iowa Department of Transportation</p> <p>STANDARD ROAD PLAN</p> <p>REVISIONS: New.</p> <p><i>Deanna Macfild</i> APPROVED BY DESIGN METHODS ENGINEER</p> <p>STRIP SEALING OPERATIONS</p>	<p>REVISION</p> <p>NEW 04-16-13</p> <p>TC-234</p> <p>SHEET 2 of 2</p>
--	--