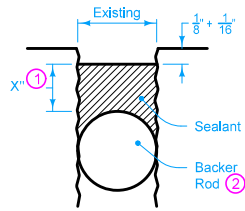
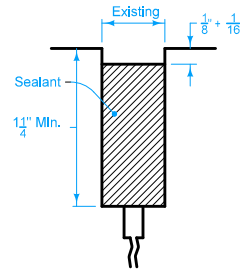


Note: Center $\frac{1}{2}$ " saw cut over the crack

CLASS I CRACK
Random Crack Less Than $\frac{1}{2}$ " In Width

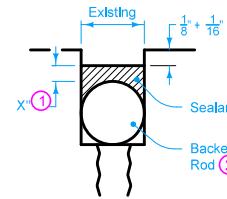


CLASS II CRACK
Random Crack $\frac{1}{2}$ " To $1\frac{1}{2}$ "

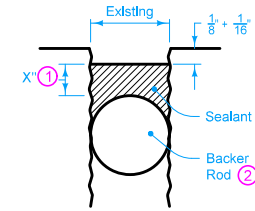


Note: Center saw cut over existing joint

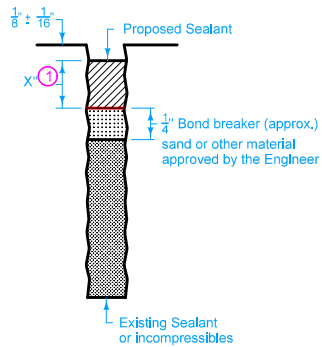
CLASS III JOINT
Existing Joint $\frac{1}{2}$ " Wide Or Less



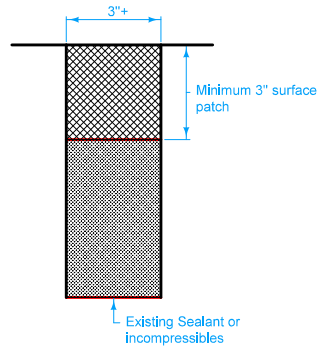
CLASS IV JOINT
Existing Width $>\frac{1}{2}$ " To $1\frac{1}{2}$ "



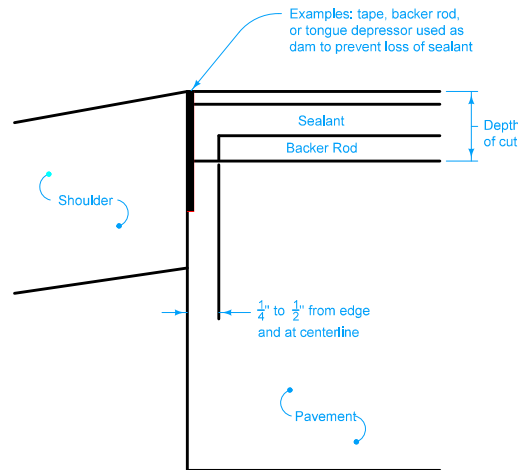
CLASS V CRACK OR JOINT
Existing Width $1\frac{1}{4}$ " To 3"



ALTERNATE BOND BREAKER FOR
CLASS II CRACK
CLASS IV JOINT
CLASS V CRACK OR JOINT



GREATER THAN 3" OPENING



BACKER ROD PLACEMENT DETAIL

- ① X" = $\frac{1}{2}$ " Minimum when width is 1" or less
2:1 (Width:Depth) when width is greater than 1"
- ② Minimum diameter of no nominal size larger than the existing crack or joint

 Iowa Department of Transportation	REVISION	
	2	10-15-13
STANDARD ROAD PLAN	RR-21	
SHEET 1 of 1		
REVISIONS: Changed Variable dimension to Existing and changed the descriptions of the CLASS III and CLASS IV JOINT drawings.		
 APPROVED BY DESIGN METHODS ENGINEER		
PCC CRACK AND JOINT CLEANING AND SEALING		