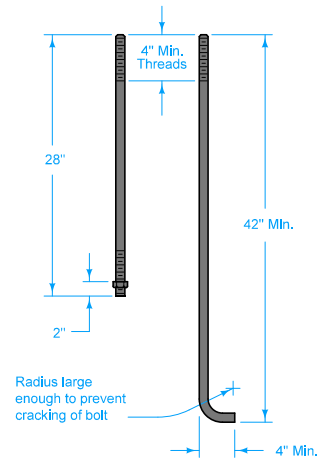
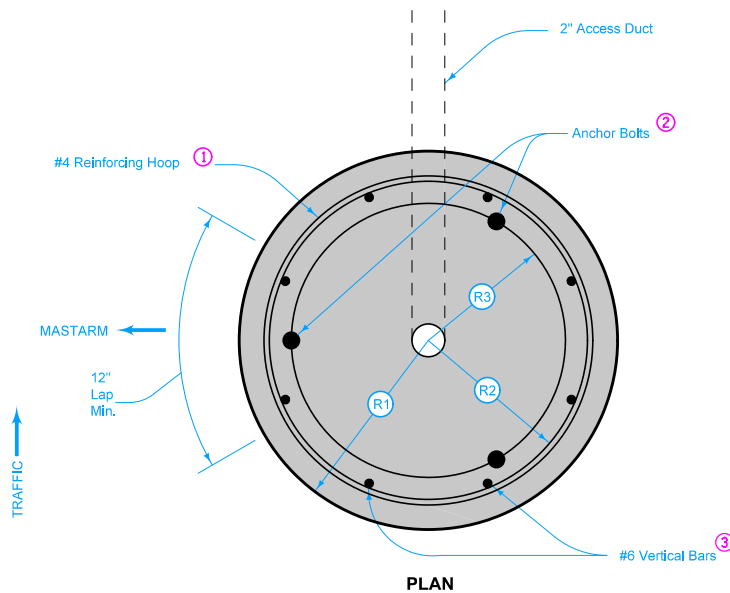


TYPICAL SECTION



1" ANCHOR BOLTS



PLAN

Diameter of footing is determined by the Anchor Bolt Circle required for the pole being installed.

Provide minimum 2" clear for all reinforcement.


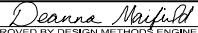
R1 = Radius of footing, minimum of 2" greater than R2, 13.5" minimum.

R2 = Radius of the reinforcing hoop, minimum of 1" greater than R3.

R3 = Radius of the anchor bolt circle.

When precast footings are used, backfill with Class B concrete. When caving soil or ground water are present, remove to provide an acceptable condition prior to placing Class B concrete.

- ① #4 bars lapped a minimum of 12". Hoops may be welded to vertical bars.
- ② Three anchor bolts required per footing. Either anchor bolt type may be used.
- ③ Use #7 bars when mounting height is greater than 44 feet.

 Iowa Department of Transportation	REVISION	
	7	10-18-11
STANDARD ROAD PLAN		RM-47
		SHEET 1 of 1
REVISIONS: Corrected title spelling.		
 APPROVED BY DESIGN METHODS ENGINEER		
FOOTING FOR SLIP-BASE LIGHT POLES		