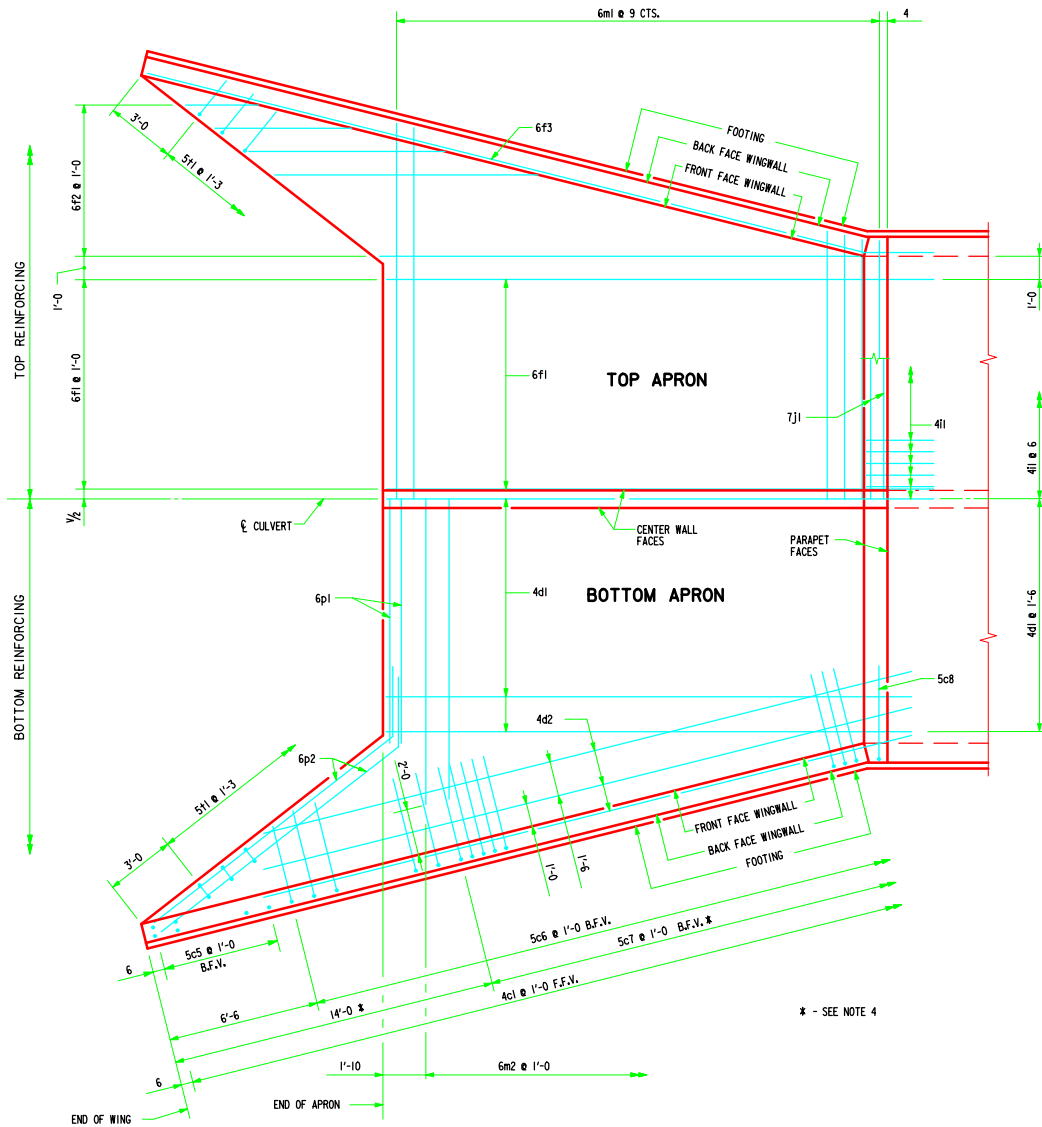
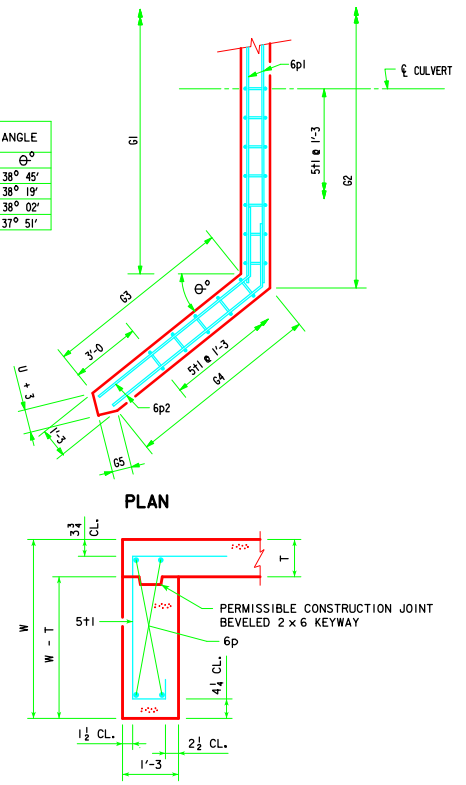


REVISION - 04-07 - ADDED PERMISSIBLE CONSTRUCTION JOINT IN CURTAIN WALL.
TWH 0-2-87



PLAN VIEW - TOP & BOTTOM OF APRON REINFORCING BARS

CULVERT HEIGHT (H)	ANGLE
6'	38° 45'
8'	38° 19'
10'	38° 02'
12'	37° 51'



CURTAIN WALL DETAILS

- NOTES :**
1. BAR SPACINGS AND POSITIONS SHOWN ARE SIMILAR FOR ALL SIZES OF HEADWALLS IN THIS STANDARD.
 2. WINGWALL BARS CONSISTENTLY REFERENCED FROM END OF WING FOR ALL HEADWALLS.
 3. TOP TRANSVERSE FLOOR BARS ARE REFERENCED APPROXIMATELY 4" FROM THE BACK OF THE PARAPET FOR ALL HEADWALLS.
 4. THERE ARE NO 5c7 BARS IN THE 6' HEIGHT HEADWALL.
 5. FOR DIMENSION TABLE SEE DRAWING TWH 0-1-87.
 6. FOR REINFORCING IN CURTAIN WALL SEE CURTAIN WALL DETAILS THIS DRAWING.

LATEST REVISION DATE :
04-07

APPROVED BY :
[Signature]

STANDARD DESIGN
FLARED WING HEADWALLS
FOR
TWIN REINFORCED CONCRETE BOX CULVERTS

IOWA DEPARTMENT OF TRANSPORTATION - HIGHWAY DIVISION
JULY , 1987

TWH 0-2-87