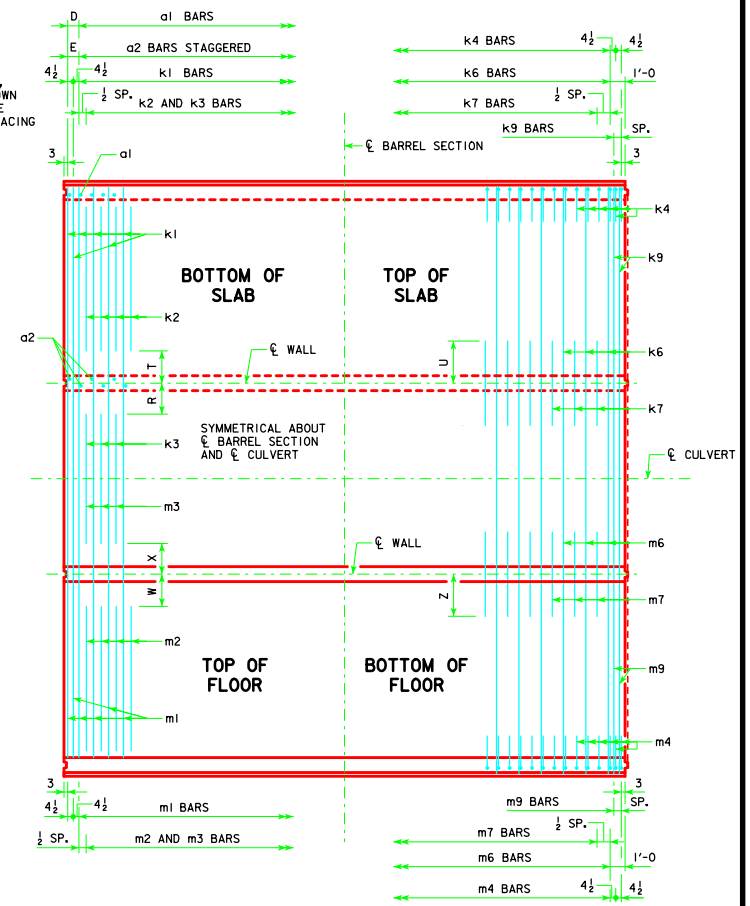
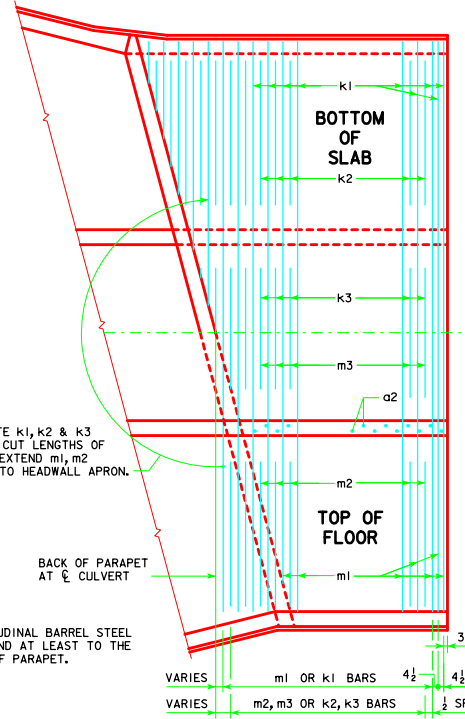
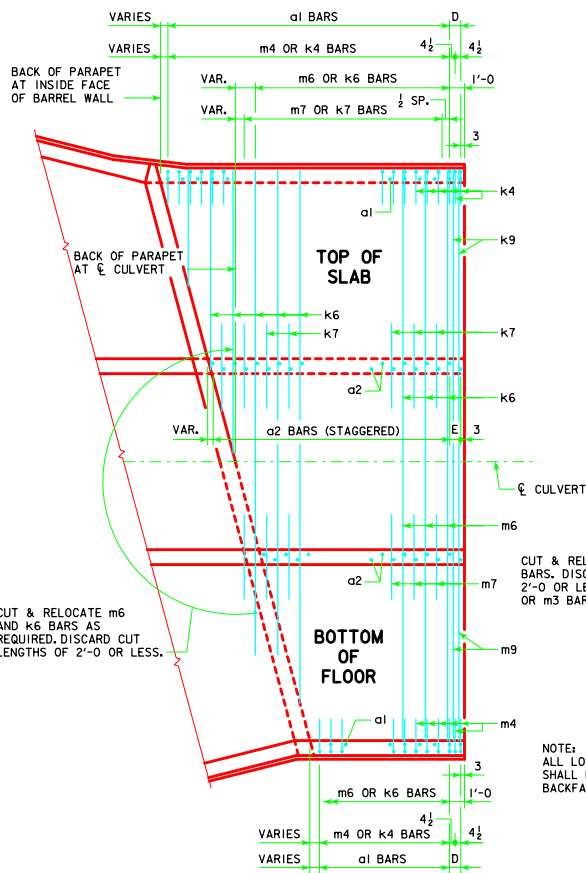


ENGLISHURFDISIGNEDTRIPLECULVERTS.DGN - TRRCB G2-12 - THIS SHEET ISSUED 04-12.



NOTE:
TYPICAL FOR LENGTHS OF 38', 35', 32', 29', AND 26'. THESE LENGTHS ARE SHOWN AS TYPICAL BECAUSE ALL TRANSVERSE AND VERTICAL REINFORCING STEEL SPACING REPEATS IN 3' INTERVALS.

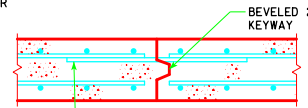
END SECTION PLAN VIEWS
(KEYWAYS NOT SHOWN)

NOTE:
END SECTION DETAILS SHOWN ARE FOR A 15° SKEW BARREL. USE FOR SKEWS OF 30° & 45° BY INCREASING THE NUMBER OF TRANSVERSE REINFORCING BARS REQUIRED TO BE CUT AND RELOCATED.

5r1 BARS - ONE CONST. JT.

SPAN	NO.	WEIGHT (LB)
10'-0"	34	124
12'-0"	40	146

NOTE:
DIMENSIONS LISTED ON THIS SHEET TO BE USED IN CONJUNCTION WITH DIMENSIONS AND QUANTITIES FOR BARREL SECTION SHEETS.



TOP SLAB CONSTRUCTION JOINT DETAIL

STANDARD SECTION PLAN VIEW
(KEYWAY IS TO BE OMITTED WHEN BELL JOINTS ARE USED)

LATEST REVISION DATE	
	STANDARD DESIGN TRIPLE REINFORCED CONCRETE BOX CULVERTS APRIL, 2012
	TYPICAL CULVERT BARREL DETAILS
APPROVED BY BRIDGE ENGINEER 	TRRCB G2-12