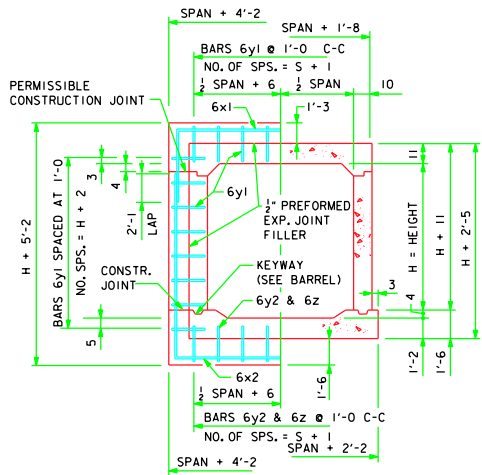
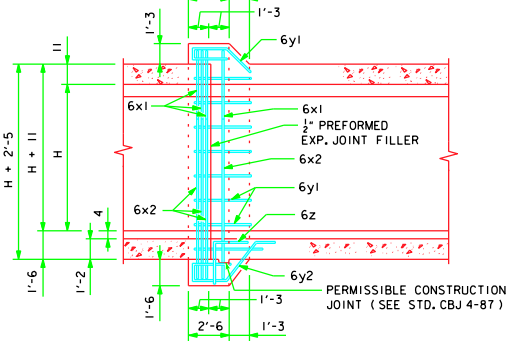


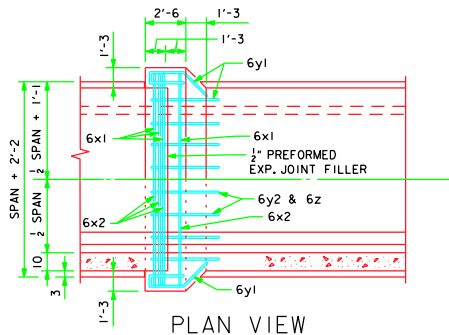
REVISION 05-10 - 6x1 BAR SPACING IN WALLS ON THE JOINT DETAIL SECT. THRU BARREL, HAD THE 1'-0" AND 8" DIMENSIONS CHANGED TO 5" AND 3".
ENGLISHS (R) EDS. INGLECULVERTS.DGN - CBJ 3-87



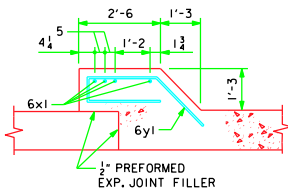
JOINT DETAIL SECTION THRU BARREL



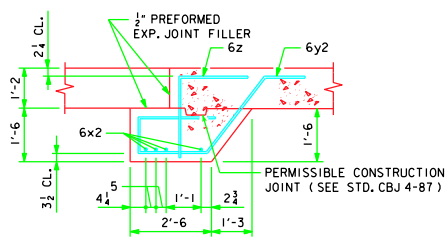
LONGITUDINAL SECTION



PLAN VIEW



TOP & SIDES - BARS 6y1



BOTTOM BARS - 6y2 & 6z

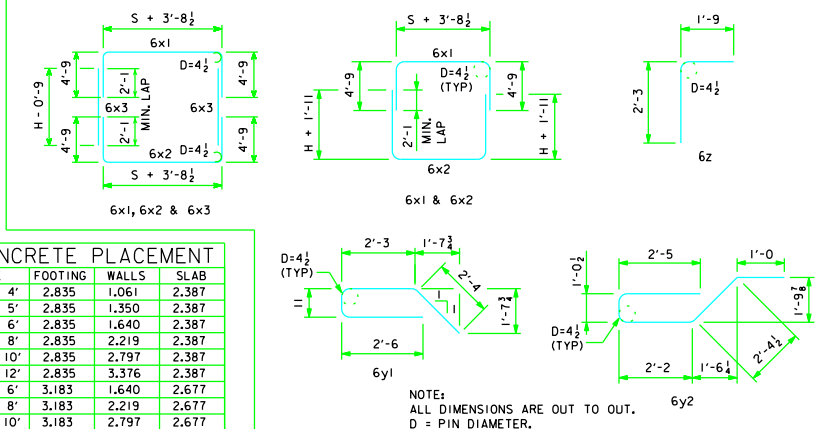
ESTIMATE OF QUANTITIES - ONE JOINT - 10' SPAN

| BILL OF REINFORCING STEEL | | | 10' x 4' | | 10' x 5' | | 10' x 6' | | 10' x 8' | | 10' x 10' | | 10' x 12' | |
|---------------------------|-----------------|-------|--------------|--------|--------------|-----|--------------|--------|--------------|--------|--------------|-----|--------------|--------|
| MARK | LOCATION | SHAPE | NO. | LENGTH | WEIGHT | NO. | LENGTH | WEIGHT | NO. | LENGTH | WEIGHT | NO. | LENGTH | WEIGHT |
| 6x1 | SLAB AND WALLS | | 4 | 23'-3 | 140 | 4 | 23'-3 | 140 | 4 | 23'-3 | 140 | 4 | 23'-3 | 140 |
| 6x2 | FLOOR AND WALLS | | 4 | 25'-7 | 154 | 4 | 23'-3 | 140 | 4 | 23'-3 | 140 | 4 | 23'-3 | 140 |
| 6x3 | WALLS | | 8 | 4'-3 | 51 | 8 | 5'-3 | 63 | 8 | 7'-3 | 87 | 8 | 9'-3 | 111 |
| 6y1 | TOP AND SIDES | | 26 | 8'-0 | 312 | 28 | 8'-0 | 336 | 30 | 8'-0 | 360 | 34 | 8'-0 | 409 |
| 6y2 | BOTTOM | | 12 | 9'-0 | 162 | 12 | 9'-0 | 162 | 12 | 9'-0 | 162 | 12 | 9'-0 | 162 |
| 6z | BOTTOM & FLOOR | | 12 | 4'-0 | 72 | 12 | 4'-0 | 72 | 12 | 4'-0 | 72 | 12 | 4'-0 | 72 |
| TOTAL WEIGHT (LBS.) | | | 840 | | 901 | | 937 | | 1010 | | 1082 | | 1154 | |
| TOTAL CONCRETE | | | 6.3 cu. yds. | | 6.6 cu. yds. | | 6.9 cu. yds. | | 7.4 cu. yds. | | 8.0 cu. yds. | | 8.6 cu. yds. | |

ESTIMATE OF QUANTITIES - ONE JOINT - 12' SPAN

| BILL OF REINFORCING STEEL | | | 12' x 6' | | 12' x 8' | | 12' x 10' | | 12' x 12' | | | | | |
|---------------------------|-----------------|-------|--------------|--------|--------------|-----|--------------|--------|--------------|--------|--------------|-----|---------------|--------|
| MARK | LOCATION | SHAPE | NO. | LENGTH | WEIGHT | NO. | LENGTH | WEIGHT | NO. | LENGTH | WEIGHT | NO. | LENGTH | WEIGHT |
| 6x1 | SLAB AND WALLS | | 4 | 25'-3 | 152 | 4 | 25'-3 | 152 | 4 | 25'-3 | 152 | 4 | 25'-3 | 152 |
| 6x2 | FLOOR AND WALLS | | 4 | 25'-3 | 152 | 4 | 25'-3 | 152 | 4 | 25'-3 | 152 | 4 | 25'-3 | 152 |
| 6x3 | WALLS | | 8 | 5'-3 | 63 | 8 | 7'-3 | 87 | 8 | 9'-3 | 111 | 8 | 11'-3 | 135 |
| 6y1 | TOP AND SIDES | | 32 | 8'-0 | 385 | 36 | 8'-0 | 433 | 40 | 8'-0 | 481 | 44 | 8'-0 | 529 |
| 6y2 | BOTTOM | | 14 | 9'-0 | 189 | 14 | 9'-0 | 189 | 14 | 9'-0 | 189 | 14 | 9'-0 | 189 |
| 6z | BOTTOM & FLOOR | | 14 | 4'-0 | 84 | 14 | 4'-0 | 84 | 14 | 4'-0 | 84 | 14 | 4'-0 | 84 |
| TOTAL WEIGHT (LBS.) | | | 1025 | | 1097 | | 1169 | | 1241 | | 1313 | | 1385 | |
| TOTAL CONCRETE | | | 7.5 cu. yds. | | 8.1 cu. yds. | | 8.7 cu. yds. | | 9.2 cu. yds. | | 9.7 cu. yds. | | 10.2 cu. yds. | |

BENT BAR DETAILS



| CONCRETE PLACEMENT | | | |
|--------------------|---------|-------|-------|
| SIZE | FOOTING | WALLS | SLAB |
| 10' x 4' | 2.835 | 1.061 | 2.387 |
| 10' x 5' | 2.835 | 1.350 | 2.387 |
| 10' x 6' | 2.835 | 1.640 | 2.387 |
| 10' x 8' | 2.835 | 2.219 | 2.387 |
| 10' x 10' | 2.835 | 2.797 | 2.387 |
| 10' x 12' | 2.835 | 3.376 | 2.387 |
| 12' x 6' | 3.183 | 1.640 | 2.677 |
| 12' x 8' | 3.183 | 2.219 | 2.677 |
| 12' x 10' | 3.183 | 2.797 | 2.677 |
| 12' x 12' | 3.183 | 3.376 | 2.677 |

NOTES:

- DIMENSIONS AND QUANTITIES SHOWN BASED ON SLAB THICKNESS OF 11", WALL = 10", AND FLOOR = 1'-2". ACCORDINGLY FOR SLAB, WALL, AND FLOOR THICKNESSES OTHER THAN SHOWN.
- ALL BAR LENGTHS ARE ESTIMATED WITH A 2" CLEARANCE FROM CONCRETE EDGE TO OUTSIDE OF BAR, EXCEPT AS NOTED.
- MATERIAL AND CONSTRUCTION TO BE IN ACCORDANCE WITH THE CURRENT STANDARD SPECIFICATIONS OF I.D.O.T.
- SEE DRAWING RCB-G-87 FOR GENERAL INFORMATION, SPECIFICATIONS, AND DESIGN STRESSES.
- BARREL FLOOR BARS MI ARE TO BE SHORTENED 6" AT BELL JOINTS.

| | | | |
|---------------------------------|--|--|----------|
| LATEST REVISION DATE : 05-10 | APPROVED BY : <i>Norman E. McConell</i> | STANDARD DESIGN | |
| | | CULVERT BELL JOINTS | |
| | | FOR REINFORCED CONCRETE BOX CULVERTS | |
| | | 10' AND 12' SPANS | |
| | | IOWA DEPARTMENT OF TRANSPORTATION - HIGHWAY DIVISION | |
| | | MAY, 1987 | CBJ 3-87 |