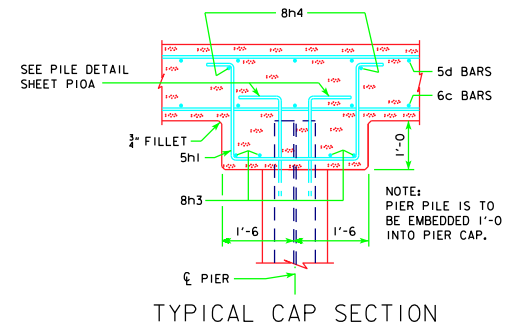


HALF SECTION NEAR PIER
 SHOWING STIRRUP SPACING AND NUMBER OF PILING
 NOTE: BOTTOM OF CAP ELEVATIONS WILL BE REQUIRED AT THE
 CL OF ROADWAY AND AT EACH EXTERIOR PILE.



12-08 LATEST REVISION DATE	<i>Thomas C. McQuinn</i> APPROVED BY BRIDGE ENGINEER		
		STANDARD DESIGN - 24' ROADWAY, 3 SPAN BRIDGES CONTINUOUS CONCRETE SLAB BRIDGES NOVEMBER, 2006	
MONOLITHIC PIER CAP DETAILS ALL BRIDGES SHEET 2 OF 2		J24-24-06	

REVISED 12-08 - REVISED PILES REQUIRED FOR 110'-0 BRIDGE.