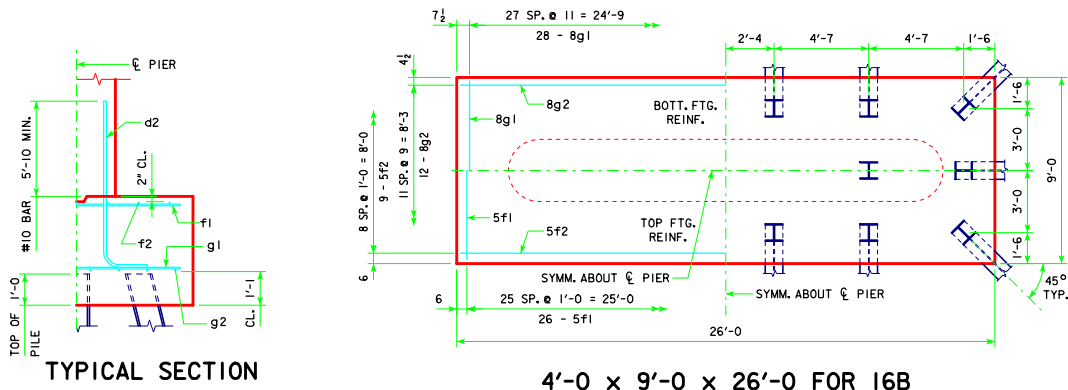
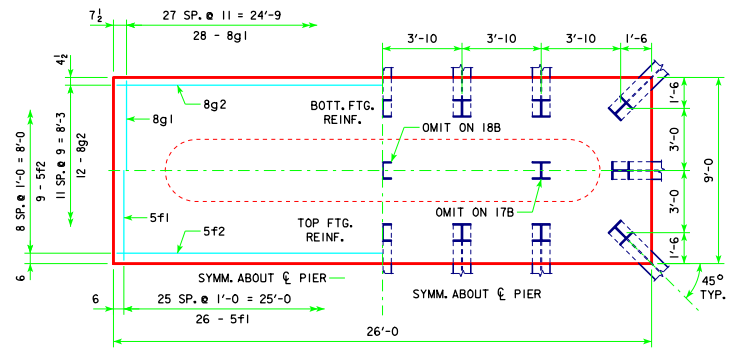


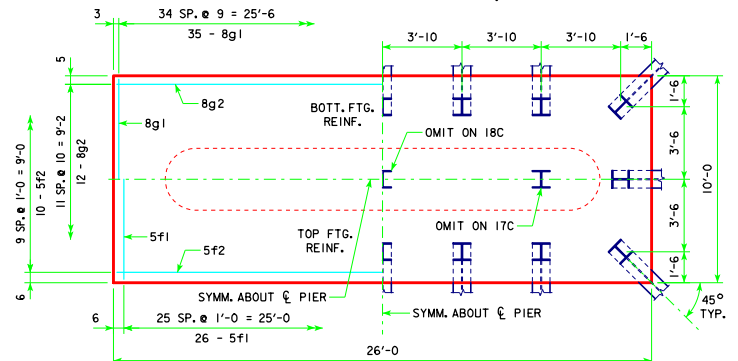
REVISED 05-13 - REVISION FOR LRFD PILE DESIGN.



4'-0 x 9'-0 x 26'-0 FOR 16B



4'-0 x 9'-0 x 26'-0 FOR 17B, 18B & 19A



4'-0 x 10'-0 x 26'-0 FOR 17C, 18C & 19B

**FOOTING NOTES:**

THESE FOOTINGS ARE DESIGNED AND DETAILED TO BE USED WITH THE CAP AND COLUMN DETAILS OF THE TEE PIERS AS SHOWN ON SHEET H44-66-07.

BATTER PILES IN EXTERIOR ROWS 1:4 IN THE DIRECTION SHOWN.

STEEL PILING USED AS POINT BEARING SHALL HAVE A MINIMUM DISTANCE OF APPROXIMATELY 10 FEET FROM BOTTOM OF FOOTING TO TOP OF BEARING ROCK. THE PILE LAYOUTS ARE SUCH THAT THE DISTANCE CENTER TO CENTER OF ADJACENT PILING SHALL NOT EXCEED 8'-0.

PIER PILES SHALL BE DRIVEN TO VALUES SHOWN IN DESIGN PLANS.

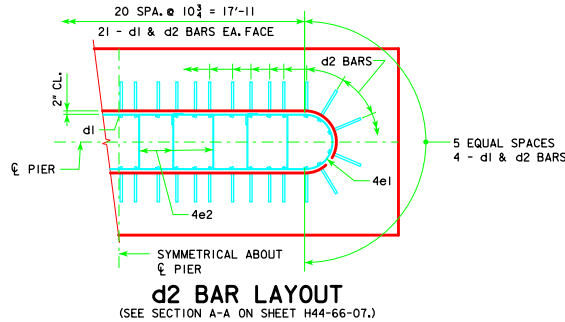
PILING (HP10x57)	FOOTING SIZE	
		DES. BRG. (KIPS)
201'-4 16B	4' x 9' x 26'	212
213'-10 17B		210
226'-4 17B		219
243'-0 18B		213
201'-4 16B	4' x 9' x 26'	216
213'-10 17B		214
226'-4 18B		209
243'-0 18B		216
201'-4 17B	4' x 9' x 26'	210
213'-10 17B		217
226'-4 18B		212
243'-0 19A		213
201'-4 17C	4' x 10' x 26'	212
213'-10 17C		219
226'-4 18C		213
243'-0 19B		214
201'-4 17C	4' x 10' x 26'	216
213'-10 18C		209
226'-4 18C		218
243'-0 19B		218

NOTE: PU, STRENGTH I DESIGN LOAD (KIPS) IS NOT THE VALUE USED IN THE FIELD FOR DRIVING PILES.

FOOTING SIZE	REINFORCING STEEL (ONE FOOTING)			TOTAL WEIGHT (LB.)	STRUCTURAL CONCRETE (CY)
	BAR NO., SIZE & SPACING	LENGTH	WEIGHT (LB.)		
4' x 9' x 26'	d2 50 - #10 AS SHOWN	10'-6	2259		
	f1 26 - #5 @ 1'-0	8'-8	235		
	f2 9 - #5 @ 1'-0	25'-8	241		
	g1 28 - #8 @ 0'-11	8'-8	648		
	g2 12 - #8 @ 0'-9	25'-8	822		
4' x 10' x 26'	d2 50 - #10 AS SHOWN	10'-6	2259		
	f1 26 - #5 @ 1'-0	9'-8	262		
	f2 10 - #5 @ 1'-0	25'-8	268		
	g1 35 - #8 @ 0'-9	9'-8	903		
	g2 12 - #8 @ 0'-10	25'-8	822		

**d2**

NOTE: D = PIN DIAMETER. DIMENSIONS ARE OUT TO OUT.



**d2 BAR LAYOUT**  
(SEE SECTION A-A ON SHEET H44-66-07.)

LATEST REVISION DATE  
05-13  
APPROVED BY BRIDGE ENGINEER  
*Thomas E. M. Donnell*

**Iowa Department of Transportation**  
Highway Division

STANDARD DESIGN - 44' ROADWAY, THREE SPAN BRIDGE

**PRETENSIONED PRESTRESSED CONCRETE BEAM BRIDGES**  
MARCH, 2007

**TEE PIER-HP10x57 SRL-2 STEEL PILE FOOTINGS**  
30° SKEW - H=25' TO 40'

**H44-71-07**