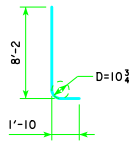


TYPICAL SECTION

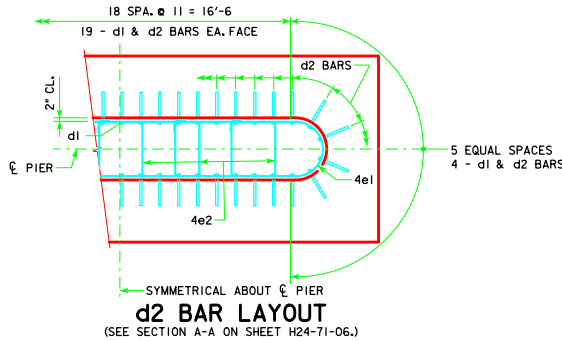


d2

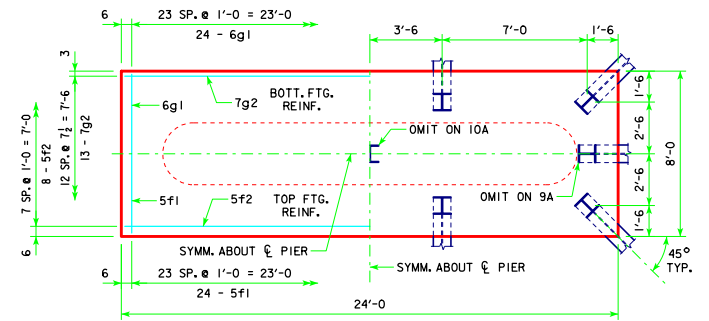
NOTE: D = PIN DIAMETER.  
DIMENSIONS ARE OUT TO OUT.

H IN FT.	CL - CL ABUT. BRG.	PILING (HP10x57)		FOOTING SIZE
		NO. & LAYOUT	① LRRFD PU STRENGTH I <sub>1</sub> DES. LOAD (KIPS)	
18 TO 21	201'-4	9A	214	3'-6 x 8' x 24'
16 TO 19	213'-10	10A	187	
	226'-4	10A	197	
	243'-0	10A	202	
19 TO 21	201'-4	10A	186	3'-6 x 8' x 24'
16 TO 19	213'-10	10A	193	
	226'-4	10A	201	
	243'-0	10A	208	
22 TO 24	201'-4	10B	191	3'-6 x 9' x 24'
19 TO 21	213'-10	10B	198	
	226'-4	10B	206	
	243'-0	10B	213	

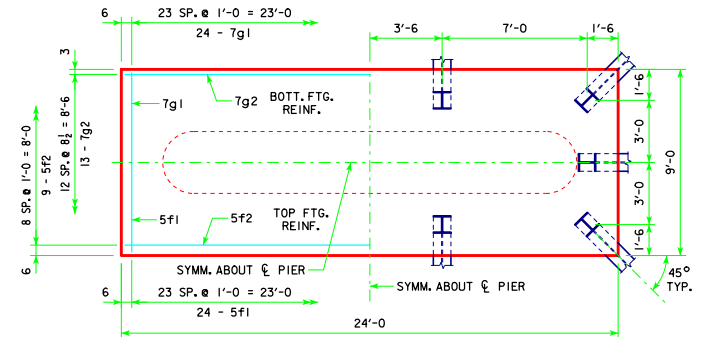
FOOTING SIZE	REINFORCING STEEL (ONE FOOTING)			TOTAL WEIGHT (LB.)	STRUCTURAL CONCRETE (CY)
	BAR NO., SIZE & SPACING	LENGTH	WEIGHT (LB.)		
3'-6 x 8' x 24'	d2 46 - #10 AS SHOWN	10'-0	1979	3273	24.9
	f1 24 - #5 @ 1'-0	7'-8	192		
	f2 8 - #5 @ 1'-0	23'-8	197		
	g1 24 - #6 @ 1'-0	7'-8	276		
	g2 13 - #7 @ 0'-7 1/2	23'-8	629		
3'-6 x 9' x 24'	d2 46 - #10 AS SHOWN	10'-0	1979	3472	28.0
	f1 24 - #5 @ 1'-0	8'-8	217		
	f2 9 - #5 @ 1'-0	23'-8	222		
	g1 24 - #7 @ 1'-0	8'-8	425		
	g2 13 - #7 @ 0'-8 1/2	23'-8	629		



① NOTE: PU, STRENGTH I DESIGN LOAD (KIPS) IS NOT THE VALUE USED IN THE FIELD FOR DRIVING PILES.



3'-6 x 8'-0 x 24'-0 FOR 9A & 10A



3'-6 x 9'-0 x 24'-0 FOR 10B

FOOTING NOTES:

THESE FOOTINGS ARE DESIGNED AND DETAILED TO BE USED WITH THE CAP AND COLUMN DETAILS OF THE TEE PIERS AS SHOWN ON SHEET H24-71-06.

BATTER PILES IN EXTERIOR ROWS 1/4 IN THE DIRECTION SHOWN.

STEEL PILING USED AS POINT BEARING SHALL HAVE A MINIMUM DISTANCE OF APPROXIMATELY 10 FEET FROM BOTTOM OF FOOTING TO TOP OF BEARING ROCK. THE PILE LAYOUTS ARE SUCH THAT THE DISTANCE CENTER TO CENTER OF ADJACENT PILING SHALL NOT EXCEED 8'-0.

PIER PILES SHALL BE DRIVEN TO VALUES SHOWN IN DESIGN PLANS.

05-13 LATEST REVISION DATE	 APPROVED BY BRIDGE ENGINEER	 STANDARD DESIGN - 24' ROADWAY, THREE SPAN BRIDGE <b>PRETENSIONED PRESTRESSED CONCRETE BEAM BRIDGES</b> DECEMBER, 2006	<b>H24-74-06</b>