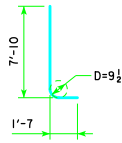


TYPICAL SECTION

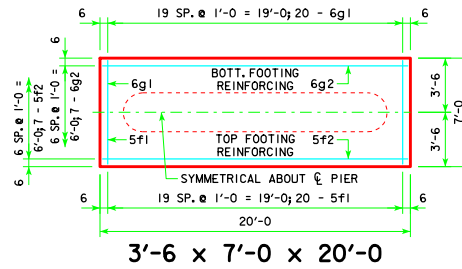
H IN FT.	CL. - CL. ABUT. BRG.	FOOTING SIZE
16 TO 18	138'-10	3'-6 x 7' x 20'
	151'-4	
	163'-10	
	176'-4	
	188'-10	
19 TO 21	201'-4	3'-6 x 7' x 22'
	213'-10	
	226'-4	
	243'-0	
	255'-6	
22 TO 24	138'-10	3'-6 x 8' x 22'
	151'-4	
	163'-10	
	176'-4	
	188'-10	
	201'-4	3'-6 x 8' x 22'
	213'-10	
	226'-4	
	243'-0	
	255'-6	
	138'-10	3'-6 x 9' x 22'
	151'-4	
	163'-10	
	176'-4	
	188'-10	
	201'-4	3'-6 x 9' x 22'
	213'-10	
	226'-4	
	243'-0	
	255'-6	



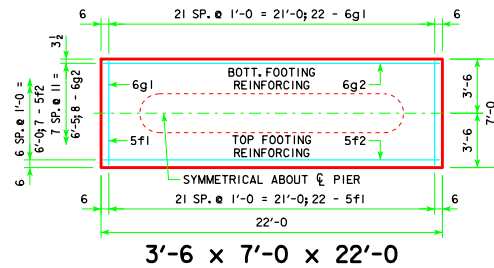
d2

NOTE: D = PIN DIAMETER. DIMENSIONS ARE OUT TO OUT.

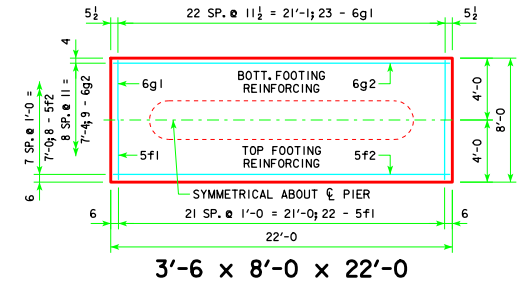
FOOTING SIZE	REINFORCING STEEL (ONE FOOTING)				STRUCTURAL CONCRETE (CY)	
	BAR	NO., SIZE & SPACING	LENGTH	TOTAL WEIGHT (LB.)		
3'-6 x 7' x 20'	d2	44 - #9 AS SHOWN	9'-5	1409	2099	18.1
	f1	20 - #5 @ 1'-0	6'-8	139		
	f2	7 - #5 @ 1'-0	19'-8	144		
	g1	20 - #6 @ 1'-0	6'-8	200		
	g2	7 - #6 @ 1'-0	19'-8	207		
3'-6 x 7' x 22'	d2	44 - #9 AS SHOWN	9'-5	1409	2200	20.0
	f1	22 - #5 @ 1'-0	6'-8	153		
	f2	7 - #5 @ 1'-0	21'-8	158		
	g1	22 - #6 @ 1'-0	6'-8	220		
	g2	8 - #6 @ 0'-11	21'-8	260		
3'-6 x 8' x 22'	d2	44 - #9 AS SHOWN	9'-5	1409	2324	22.8
	f1	22 - #5 @ 1'-0	7'-8	176		
	f2	8 - #5 @ 1'-0	21'-8	181		
	g1	23 - #6 @ 0'-11 1/2	7'-8	265		
	g2	9 - #6 @ 0'-11	21'-8	293		
3'-6 x 9' x 22'	d2	44 - #9 AS SHOWN	9'-5	1409	2487	25.7
	f1	22 - #5 @ 1'-0	8'-8	199		
	f2	9 - #5 @ 1'-0	21'-8	203		
	g1	27 - #6 @ 0'-9 1/2	8'-8	351		
	g2	10 - #6 @ 0'-11	21'-8	325		



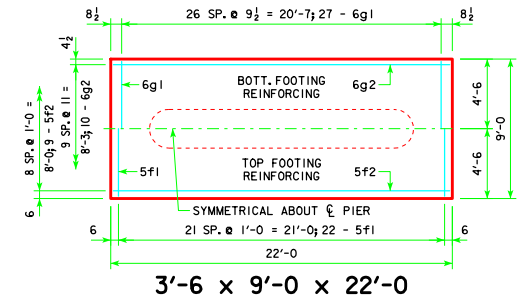
3'-6 x 7'-0 x 20'-0



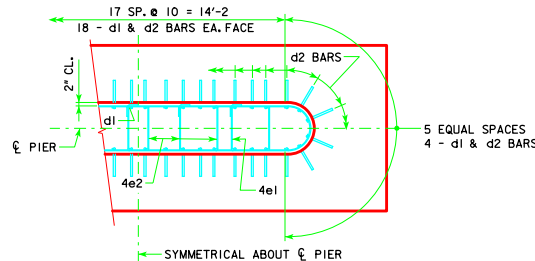
3'-6 x 7'-0 x 22'-0



3'-6 x 8'-0 x 22'-0



3'-6 x 9'-0 x 22'-0



d2 BAR LAYOUT

(SEE SECTION A-A ON SHEET H24-57-06.)

FOOTING NOTES:

THESE SPREAD FOOTINGS ARE DESIGNED AND DETAILED TO BE USED WITH THE CAP AND COLUMN DETAILS OF THE TEE PIERS AS SHOWN ON SHEET H24-57-06.

THESE SPREAD FOOTINGS SHALL EXTEND AT LEAST 6 INCHES INTO SUITABLE FOUNDATION ROCK AND THE LAST 6 INCHES OF ROCK EXCAVATION SHALL BE TO NEAT LINES OF MASONRY. THE FOUNDATION ROCK SHALL HAVE A MINIMUM LRFD NOMINAL BEARING RESISTANCE OF 30 KIIPS PER SQUARE FOOT (ALLOWABLE BEARING VALUE OF AT LEAST 5 TONS PER SQUARE FOOT).

04-12 LATEST REVISION DATE  <i>Thomas E. McQuinn</i> APPROVED BY BRIDGE ENGINEER		
	STANDARD DESIGN - 24' ROADWAY, THREE SPAN BRIDGE <b>PRETENSIONED PRESTRESSED CONCRETE BEAM BRIDGES</b> DECEMBER, 2006	
	<b>TEE PIER - SPREAD FOOTINGS</b> 15° SKEW - H=16' TO 24'	<b>H24-62-06</b>

REVISED 04-12 - EXCAVATION LIMIT WAS CHANGED TO 3'-0.