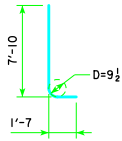


TYPICAL SECTION

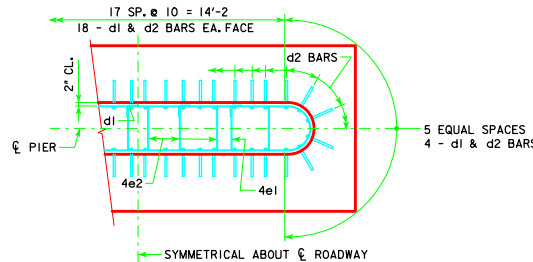
H IN FT.	CL. - CL. ABUT. BRG.	FOOTING SIZE
16 TO 18	138'-10	3'-6 x 7' x 20'
	151'-4	
	163'-10	
	176'-4	
19 TO 21	188'-10	3'-6 x 7' x 22'
	201'-4	
	213'-10	
	226'-4	
22 TO 24	243'-0	3'-6 x 8' x 22'
	138'-10	
	151'-4	
	163'-10	
22 TO 24	176'-4	3'-6 x 8' x 22'
	188'-10	
	201'-4	
	213'-10	
22 TO 24	226'-4	3'-6 x 9' x 22'
	243'-0	



d2

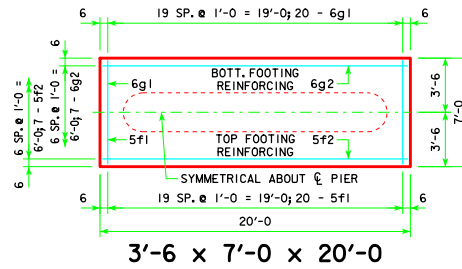
NOTE: D = PIN DIAMETER. DIMENSIONS ARE OUT TO OUT.

FOOTING SIZE	REINFORCING STEEL (ONE FOOTING)				STRUCTURAL CONCRETE (CY)
	BAR	NO., SIZE & SPACING	LENGTH	TOTAL WEIGHT (LB.)	
3'-6 x 7' x 20'	d2	44 - #9 AS SHOWN	9'-5	1409	2099
	f1	20 - #5 @ 1'-0	6'-8	139	
	f2	7 - #5 @ 1'-0	19'-8	144	
	g1	20 - #6 @ 1'-0	6'-8	200	
	g2	7 - #6 @ 1'-0	19'-8	207	
3'-6 x 7' x 22'	d2	44 - #9 AS SHOWN	9'-5	1409	2200
	f1	22 - #5 @ 1'-0	6'-8	153	
	f2	7 - #5 @ 1'-0	21'-8	158	
	g1	22 - #6 @ 1'-0	6'-8	220	
	g2	8 - #6 @ 0'-11	21'-8	260	
3'-6 x 8' x 22'	d2	44 - #9 AS SHOWN	9'-5	1409	2324
	f1	22 - #5 @ 1'-0	7'-8	176	
	f2	8 - #5 @ 1'-0	21'-8	181	
	g1	23 - #6 @ 0'-11 1/2	7'-8	265	
	g2	9 - #6 @ 0'-11	21'-8	293	
3'-6 x 9' x 22'	d2	44 - #9 AS SHOWN	9'-5	1409	2442
	f1	22 - #5 @ 1'-0	8'-8	199	
	f2	9 - #5 @ 1'-0	21'-8	203	
	g1	26 - #6 @ 0'-10	8'-8	338	
	g2	9 - #6 @ 1'-0	21'-8	293	

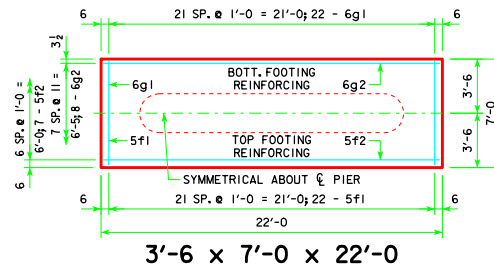


d2 BAR LAYOUT

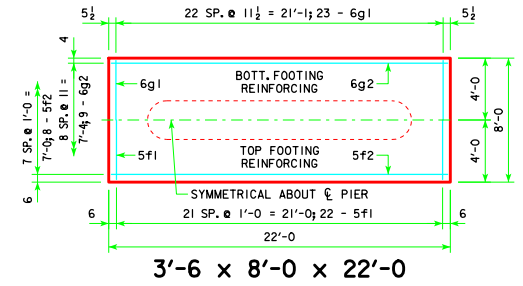
(SEE SECTION A-A ON SHEET H24-50-06.)



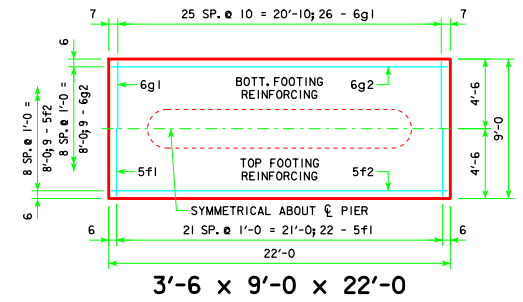
3'-6 x 7'-0 x 20'-0



3'-6 x 7'-0 x 22'-0



3'-6 x 8'-0 x 22'-0



3'-6 x 9'-0 x 22'-0

FOOTING NOTES:

THESE SPREAD FOOTINGS ARE DESIGNED AND DETAILED TO BE USED WITH THE CAP AND COLUMN DETAILS OF THE TEE PIERS AS SHOWN ON SHEET H24-50-06.

THESE SPREAD FOOTINGS SHALL EXTEND AT LEAST 6 INCHES INTO SUITABLE FOUNDATION ROCK AND THE LAST 6 INCHES OF ROCK EXCAVATION SHALL BE TO NEAT LINES OF MASONRY. THE FOUNDATION ROCK SHALL HAVE A MINIMUM LRFD NOMINAL BEARING RESISTANCE OF 30 KIIPS PER SQUARE FOOT (ALLOWABLE BEARING VALUE OF AT LEAST 5 TONS PER SQUARE FOOT).

04-12 LATEST REVISION DATE	 APPROVED BY BRIDGE ENGINEER	 STANDARD DESIGN - 24' ROADWAY, THREE SPAN BRIDGE PRETENSIONED PRESTRESSED CONCRETE BEAM BRIDGES DECEMBER, 2006	TEE PIER - SPREAD FOOTINGS 0° SKEW - H=16' TO 24'	H24-55-06

REVISED 04-12 - EXCAVATION LIMIT WAS CHANGED TO 3'-0.