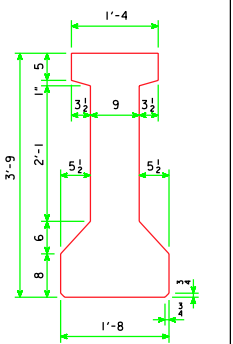
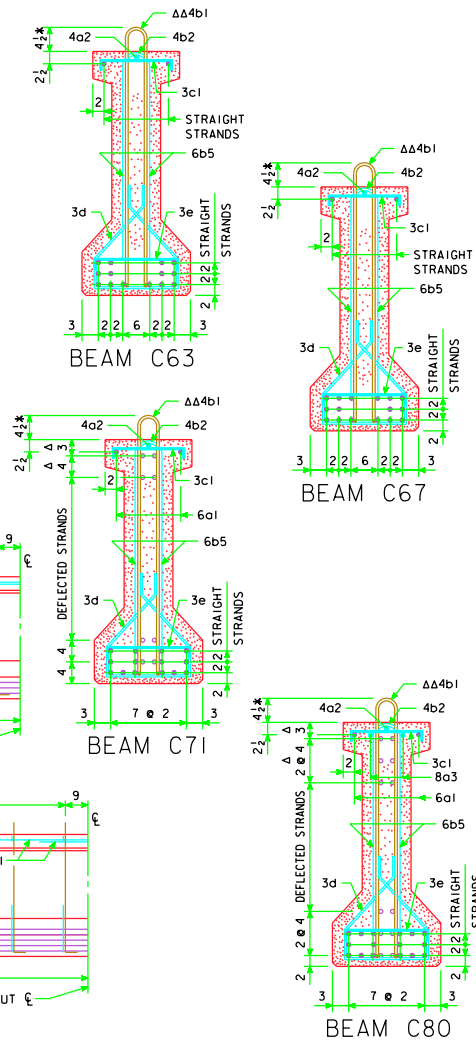
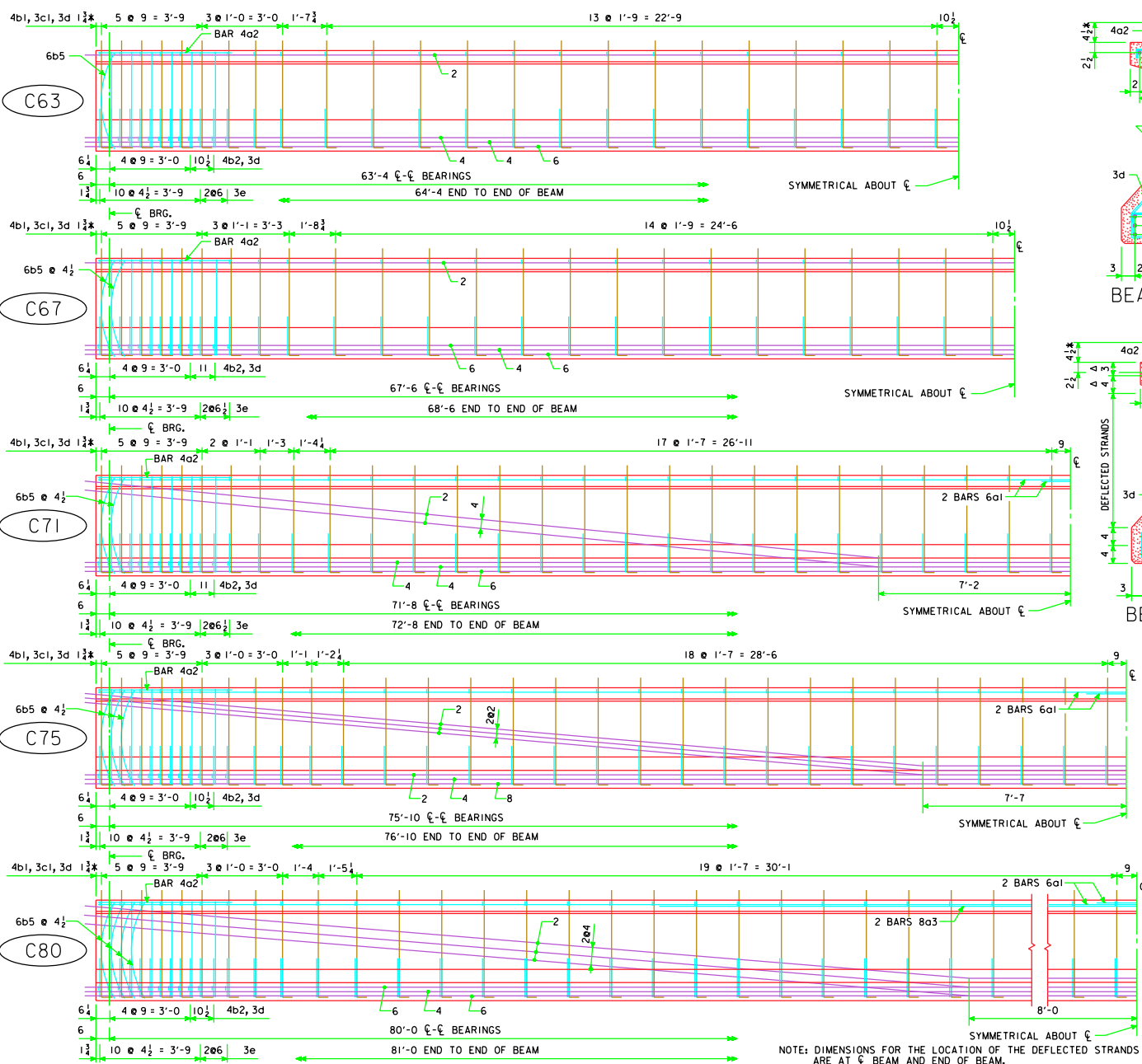


REVISED 01-10 - THE BEAM DETAILS WERE UPDATED TO THE CURRENT BEAMS.



"C" BEAM CROSS SECTION
 $A = 564.5 \text{ in}^2$
 $Y_b = 20.23 \text{ in}$
 $I = 116,354 \text{ in}^4$

NOTE: BARS 3d ARE TO BE PLACED IN PAIRS.
 * KEEP
 Δ DIMENSIONS AT END OF BEAM
 ΔΔ EPOXY COATED BARS

NOTE: DIMENSIONS FOR THE LOCATION OF THE DEFLECTED STRANDS ARE AT $\bar{\bar{c}}$ BEAM AND END OF BEAM.

01-10 LATEST REVISION DATE <i>Norman C. McQuinn</i> APPROVED BY BRIDGE ENGINEER	
	Iowa Department of Transportation Highway Division STANDARD DESIGN - 24' ROADWAY, THREE SPAN BRIDGE PRETENSIONED PRESTRESSED CONCRETE BEAM BRIDGES DECEMBER, 2006
C BEAM DETAILS	H24-37-06