

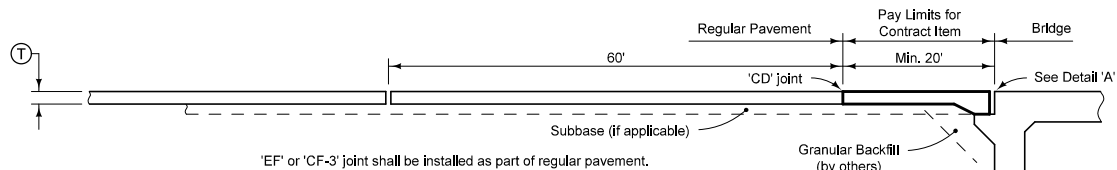
TYPICAL BRIDGE APPROACH PLAN

Use the same concrete for the bridge approach section as that used for remainder of project pavement.

For joint details, see PV-101.

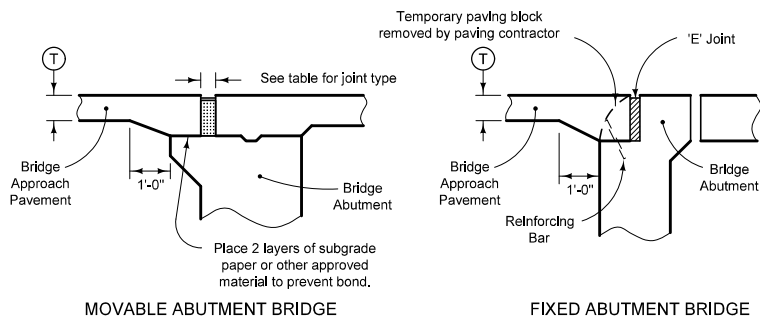
- ① If bridge is skewed, place additional #5 bar parallel to skewed face.

Quantity for 20' long approach section for 24' pavement is 53.33 sq. yds. of "Bridge Approach."



SECTION A-A

JOINT TYPE FOR MOVABLE ABUTMENT BRIDGES		
Joint	Concrete Beam Maximum Bridge Length	Steel Girder Maximum Bridge Length
CF-1	370'	250'
CF-2	465'	320'
CF-3	575'	400'

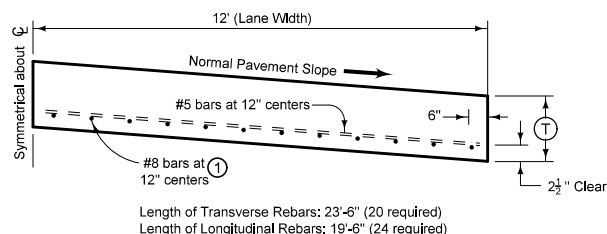


MOVABLE ABUTMENT BRIDGE

FIXED ABUTMENT BRIDGE

DETAIL 'A'

'T' is same thickness as is required for remainder of project pavement.



TYPICAL HALF SECTION B

Possible Contract Items:
Bridge Approach, RK-18
Standard or Slip-Form PCC Pavement

Possible Tabulation:
112-6

 STANDARD ROAD PLAN <small>REVISIONS: Redrew reinforcing mat to place #5 bars on top of #8 bars. Modified notes.</small>	<small>REVISION</small> 11 10-16-12	
	RK-18	
	<small>SHEET 1 of 1</small>	
	<small>APPROVED BY DESIGN METHODS ENGINEER</small> <i>Deanna Maifield</i>	
BRIDGE APPROACH DETAILS (SECONDARY ROADS)		