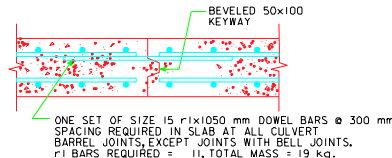
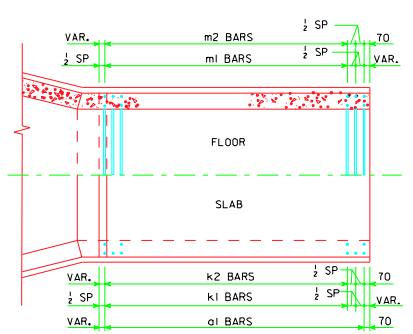
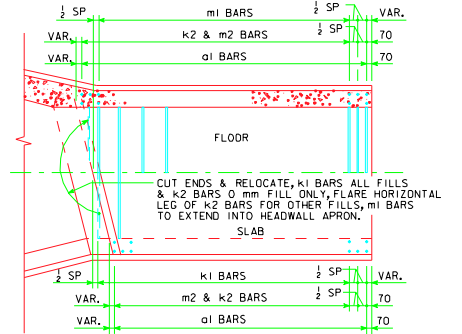
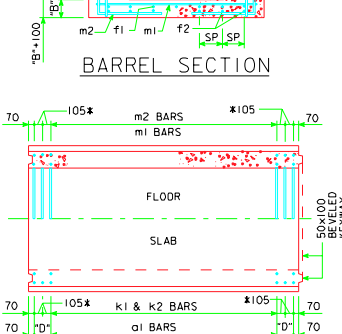
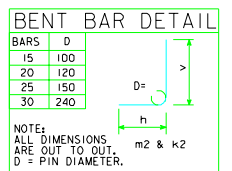
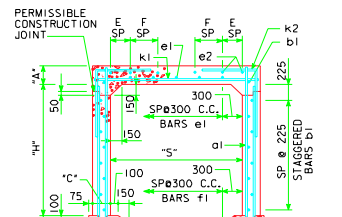


VARIABLE DIMENSIONS AND QUANTITIES FOR BARREL SECTIONS

FILL	DIMENSIONS										DIMENSIONS										QUANTITIES																																	
	a1					b1					e1					e2					f1					k1					m1					k2					m2					CONCRETE m ³ /m		STEEL						
	S	H	A	B	C	*D	SIZE	SP	L	SIZE	SP	NO.	SIZE	SP	NO.	SIZE	SP	NO.	SPACING	E	F	NO.	SIZE	SP	NO.	SIZE	SP	NO.	SIZE	SP	NO.	SIZE	SP	NO.	SIZE	SP	L	SIZE	SP	L	SIZE	SP	L	h	v	SIZE	SP	L	h	v	SLAB	FLOOR	WALLS	TOTAL
0	3000	1200	270	270	230	210	15	210	1710	15	225	12	15	300	9	15	300	300	11	15	300	11	15	410	6	20	182	3360	15	140	3510	15	105	2690	2000	690	15	105	2780	1150	1580	1,014	1,061	0.505	2.580	348.3								
300	3000	1200	280	280	230	210	15	140	1730	15	225	12	15	300	9	15	280	280	6	15	300	11	15	410	6	20	182	3360	15	210	3510	15	182	1590	840	690	15	182	2710	1100	1610	1,049	1,097	0.505	2.850	254.9								
600	3000	1200	220	255	230	140	15	140	1650	15	225	12	15	300	9	15	330	330	6	15	300	11	15	360	6	25	280	3360	20	210	3510	15	105	1510	820	690	15	105	2470	970	1500	0.841	1,007	0.505	2.352	318.7								
900-2100	3000	1200	205	255	230	140	15	140	1630	15	225	12	15	300	9	15	410	-	4	15	300	11	15	410	4	20	210	3360	20	182	3510	15	105	1690	840	790	20	182	2340	840	1500	0.789	1,007	0.505	2.300	308.0								
2400-3000	3000	1200	205	255	230	140	15	210	1630	15	225	12	15	300	9	15	300	300	6	15	300	11	15	300	6	15	300	6	15	105	3360	25	182	3510	25	210	1890	870	1020	25	210	2870	740	1500	0.789	1,007	0.505	2.300	387.2					
4200-4800	3000	1200	245	295	230	210	15	210	1710	15	225	12	15	300	9	15	410	-	4	15	300	11	15	410	4	25	182	3360	25	210	3510	25	210	1810	790	1020	25	210	2370	790	1580	0.928	1,151	0.505	2.583	394.0								
5100-6000	3000	1200	280	330	230	210	15	140	1780	15	225	12	15	300	9	15	410	-	4	15	300	11	15	410	4	25	210	3360	20	105	3510	15	105	1490	670	820	15	105	2380	670	1660	1,049	1,277	0.505	2.831	360.1								
6300-7500	3000	1200	330	395	230	210	15	210	1880	15	225	12	15	300	9	15	410	-	4	15	300	11	15	410	4	20	105	3360	25	182	3510	25	210	1710	690	1020	25	210	2450	690	1760	1,222	1,458	0.505	3.184	405.8								

* THESE DIMENSIONS ARE CORRECT FOR 11 480 mm LONG STANDARD SECTIONS ONLY. DIMENSIONS MUST BE RECALCULATED FOR ALL OTHER SECTION LENGTHS.



TOP SLAB CONSTRUCTION JOINT DETAIL

NOTES:
1. SEE SHEET MRCB-61-95 FOR GENERAL INFORMATION, SPECIFICATIONS, AND DESIGN STRESSES.

STANDARD SECTION PLAN VIEW

NOTE:
TYPICAL FOR LENGTHS OF 11 480 mm. (KEYWAY IS TO BE OMITTED WHEN BELL JOINTS ARE USED)

PLAN - SKEW TYPICAL
(KEYWAY NOT SHOWN)

NOTE:
ALL LONGITUDINAL BARREL STEEL SHALL EXTEND AT LEAST TO THE BACKFACE OF PARAPET.

PLAN - SKEW 0°
(KEYWAY NOT SHOWN)

LATEST REVISION DATE: _____

APPROVED BY: _____

STANDARD DESIGN
CULVERT BARREL DETAILS
FOR
REINFORCED CONCRETE BOX CULVERTS

PROJECT DEVELOPMENT DIVISION
IOWA DEPARTMENT OF TRANSPORTATION

JULY, 1995

MRCB-3000-1-95