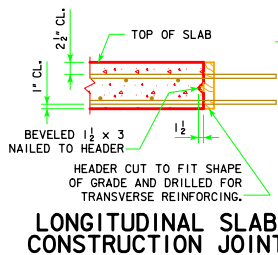


BEVELED $1\frac{1}{2} \times 3$
NAILED TO HEADER

HEADER CUT TO FIT SHAPE
OF CROWN AND DRILLED FOR
LONGITUDINAL REINFORCING.

* NOTE: DOUBLE DRIP
GROOVES FOR OPEN
RAIL OPTION ONLY.



BEVELED $1\frac{1}{2} \times 3$
NAILED TO HEADER

HEADER CUT TO FIT SHAPE
OF GRADE AND DRILLED FOR
TRANSVERSE REINFORCING.

GENERAL NOTES:

CLEAR DISTANCE FROM FACE OF CONCRETE TO NEAR REINFORCING BAR SHALL BE 2" UNLESS OTHERWISE NOTED OR SHOWN.

ALL REINFORCING BARS ARE TO BE SECURELY WIRED IN PLACE AND ADEQUATELY SUPPORTED ON BAR CHAIRS BEFORE CONCRETE IS PLACED. I.M. 451.01 REQUIREMENTS SHALL APPLY FOR BAR CHAIRS

ALL PRESTRESSED CONCRETE BEAMS ARE TO BE SET VERTICAL.

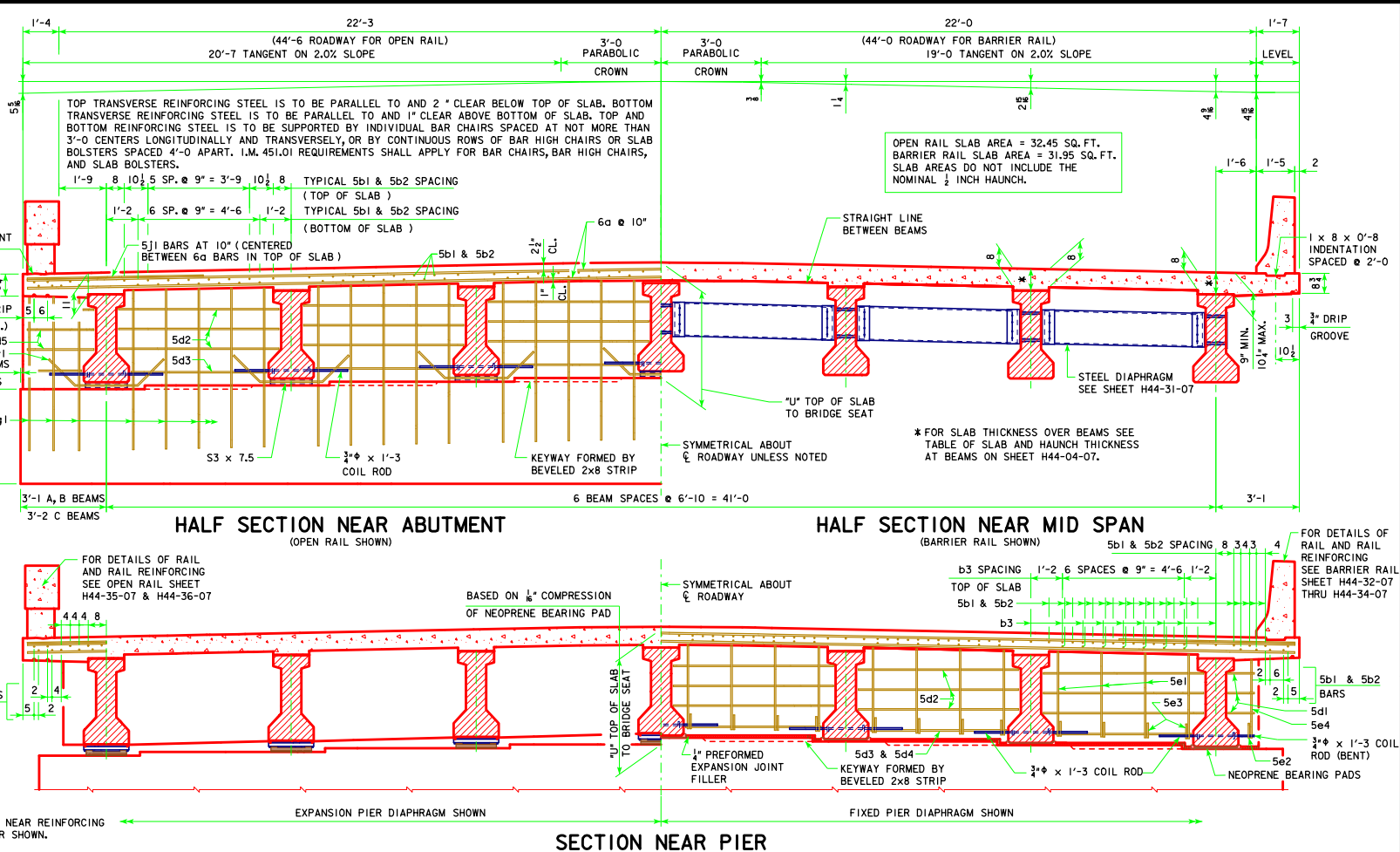
FORMS FOR THE SLAB AND RAILS ARE TO BE SUPPORTED BY THE PRESTRESSED CONCRETE BEAMS.

WEIGHT OF DRAINS IS INCLUDED IN THE STRUCTURAL STEEL QUANTITY.

THE PIER AND ABUTMENT DIAPHRAGM CONCRETE IS TO BE PLACED MONOLITHICALLY WITH THE FLOOR SLAB.

ALL REINFORCING STEEL IS TO BE GRADE 60.

COST OF ALL PREFORMED EXPANSION JOINT FILLER MATERIAL IS TO BE INCLUDED IN THE PRICE BID FOR "STRUCTURAL CONCRETE (BRIDGE)".



LENGTH OF S3 x 7.5 (ABUTMENT BEAM SEAT)

BEAM BOTTOM FLANGE WIDTH	LENGTH OF S3 x 7.5
1'-5	1'-3 $\frac{1}{2}$
1'-8	1'-6 $\frac{1}{2}$

LATEST REVISION DATE

06-12

APPROVED BY BRIDGE ENGINEER

Thomas E. McQuinn

Iowa Department of Transportation

Highway Division

STANDARD DESIGN - 44' ROADWAY, THREE SPAN BRIDGE

PRETENSIONED PRESTRESSED CONCRETE BEAM BRIDGES

MARCH, 2007

H44-03-07