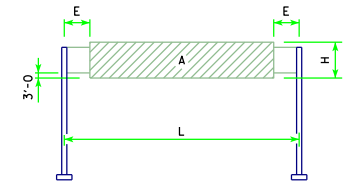


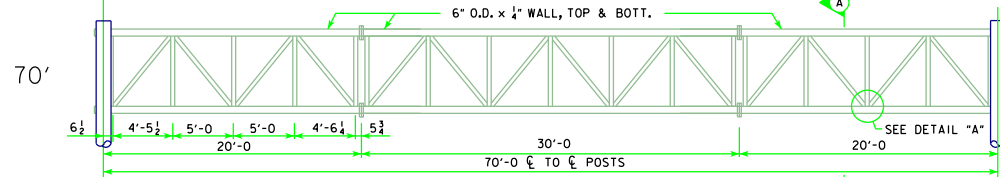
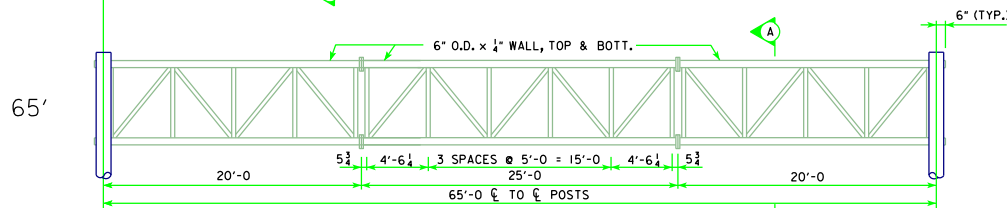
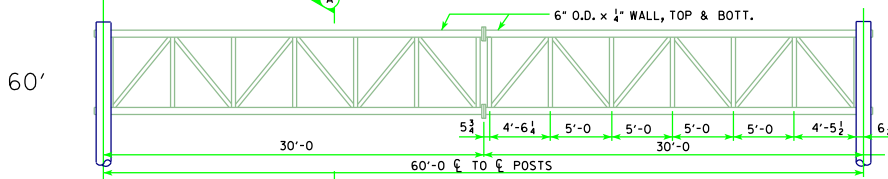
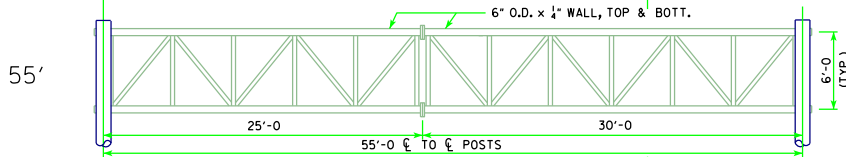
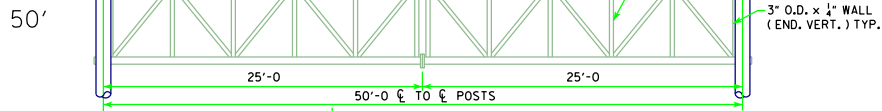
CAMBER DIAGRAM

SPAN L	CAMBER H
50'	$\frac{11}{16}$
55'	$\frac{7}{8}$
60'	1"
65'	$1\frac{1}{16}$
70'	$1\frac{3}{8}$

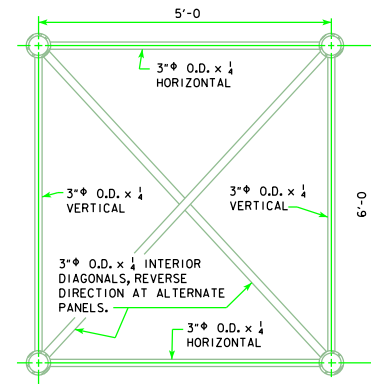
ALLOWABLE SIGN AREA			
L	H <sub>1</sub> MAX.	E <sub>1</sub> MIN.	A <sub>1</sub> MAX.
70'	14'-9"	7'-0"	826 S.F.
65'	14'-9"	4'-6"	826 S.F.
60'	14'-9"	2'-6"	811 S.F.
55'	14'-9"	2'-6"	737 S.F.
50'	14'-9"	2'-6"	663 S.F.



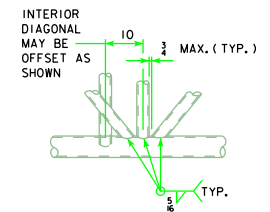
SIGN AREA FOR SIGN TRUSS DESIGN




PART ELEVATION



SECTION A-A



DETAIL "A"

09-07 LATEST REVISION DATE	APPROVED BY BRIDGE ENGINEER		
		STANDARD DESIGN <b>ALUMINUM OVERHEAD SIGN TRUSS</b> WITH GALVANIZED STEEL SUPPORTS FEBRUARY, 2006	
ELEVATION VIEWS		STOH-02-06	
50' TO 70' SPANS			