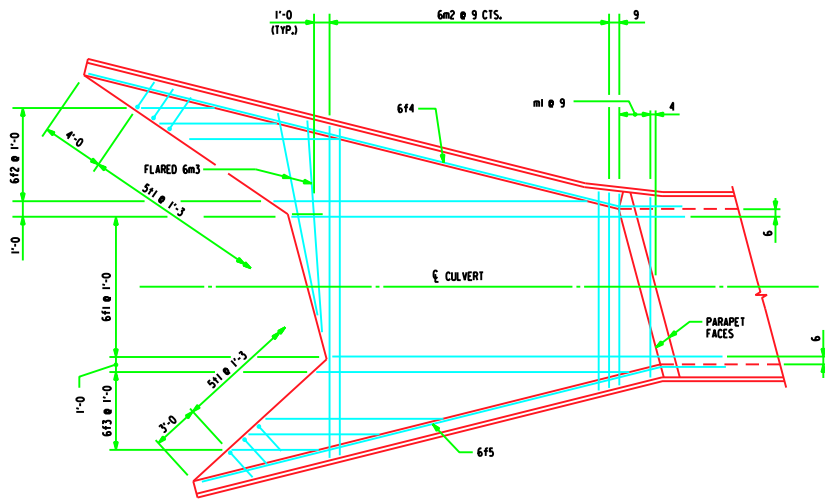
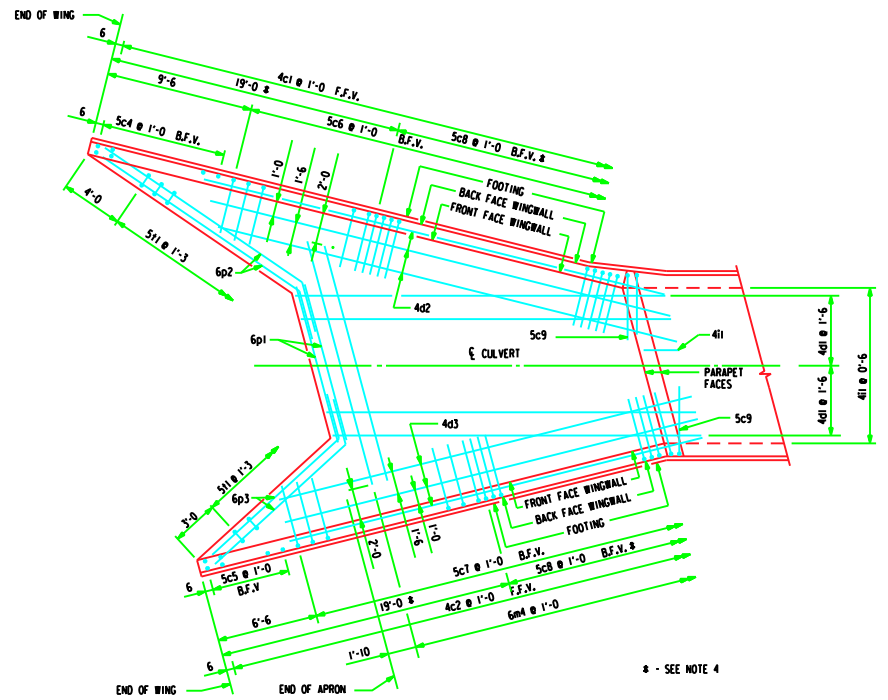


REVISION - 04-07 - ADDED PERMISSIBLE CONSTRUCTION JOINT IN CURTAIN WALL.  
FHW 15-5-87



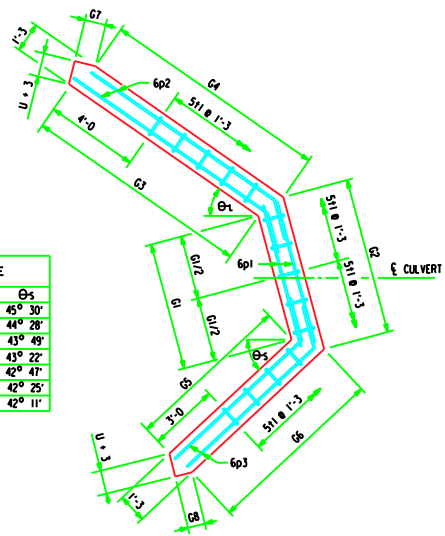
PLAN VIEW - TOP OF APRON REINFORCING BARS



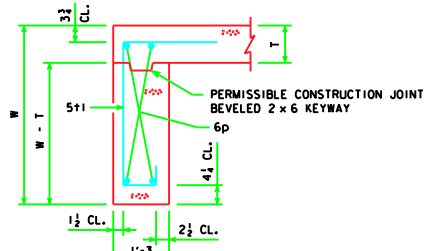
PLAN VIEW - BOTTOM OF APRON REINFORCING BARS

\* - SEE NOTE 4

CULVERT HEIGHT (H)	ANGLE	
	Θ <sub>L</sub>	Θ <sub>S</sub>
3'	35° 57'	45° 30'
4'	35° 25'	44° 28'
5'	35° 03'	43° 49'
6'	34° 49'	43° 22'
8'	34° 30'	42° 47'
10'	34° 18'	42° 25'
12'	34° 11'	42° 11'



PLAN



SECTION

CURTAIN WALL DETAILS

- NOTES :
1. BAR SPACINGS AND POSITIONS SHOWN ARE SIMILAR FOR ALL SIZES OF HEADWALLS IN THIS STANDARD.
  2. WINGWALL BARS CONSISTENTLY REFERENCED FROM END OF WING FOR ALL HEADWALLS.
  3. TOP TRANSVERSE FLOOR BARS ARE REFERENCED APPROXIMATELY 4" FROM THE BACK OF THE PARAPET FOR ALL HEADWALLS.
  4. THERE ARE NO 5c8 BARS IN THE 3', 4', 5', AND 6' HEIGHT HEADWALL.
  5. FOR REINFORCING IN CURTAIN WALL SEE CURTAIN WALL DETAILS ON THIS DWG.
  6. FOR DIMENSION TABLE SEE DWG. FHW 15-4-87.

LATEST REVISION DATE : 04-07	APPROVED BY : 	STANDARD DESIGN <b>FLARED WING HEADWALLS</b> FOR REINFORCED CONCRETE BOX CULVERTS  IOWA DEPARTMENT OF TRANSPORTATION - HIGHWAY DIVISION MAY, 1987
		FHW 15-5-87