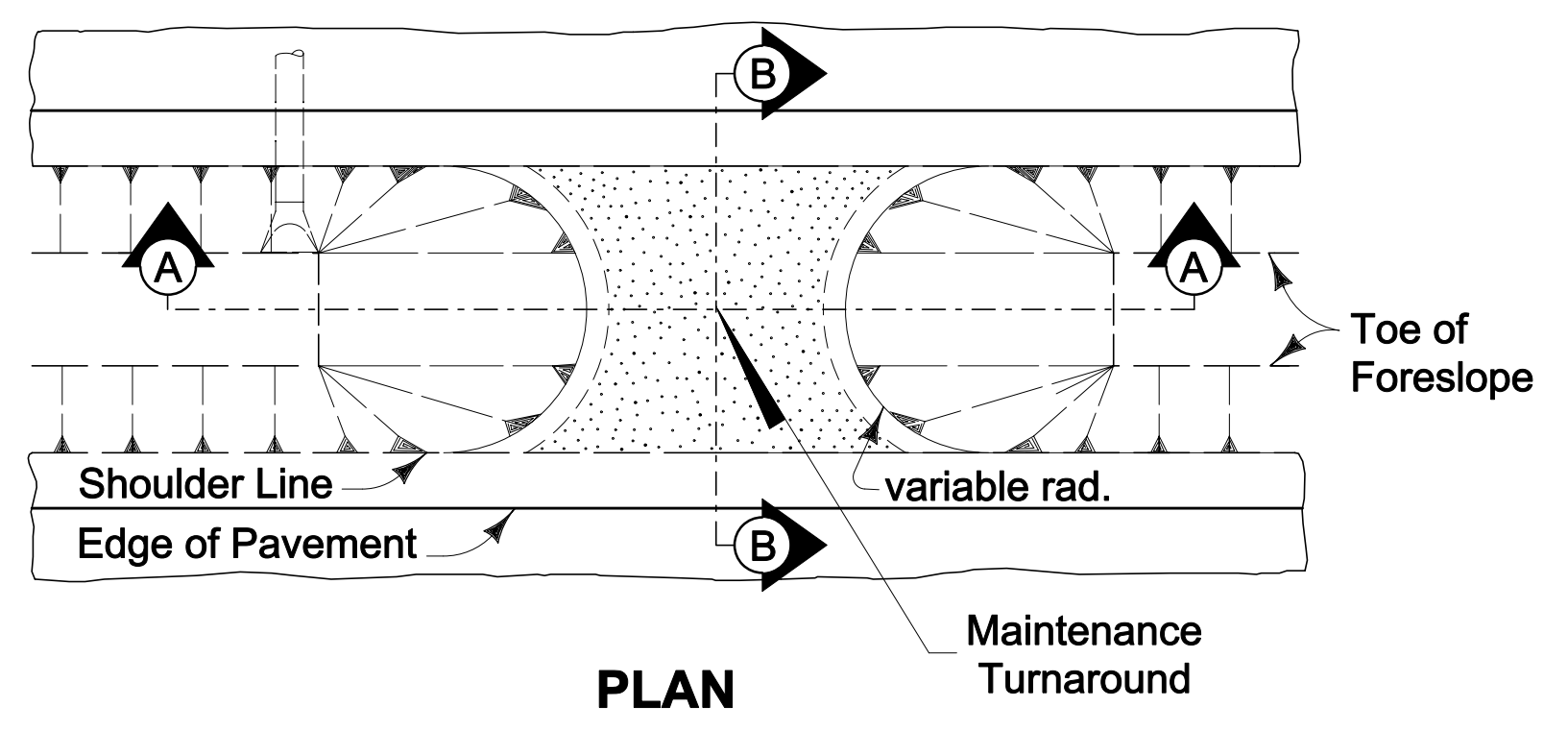
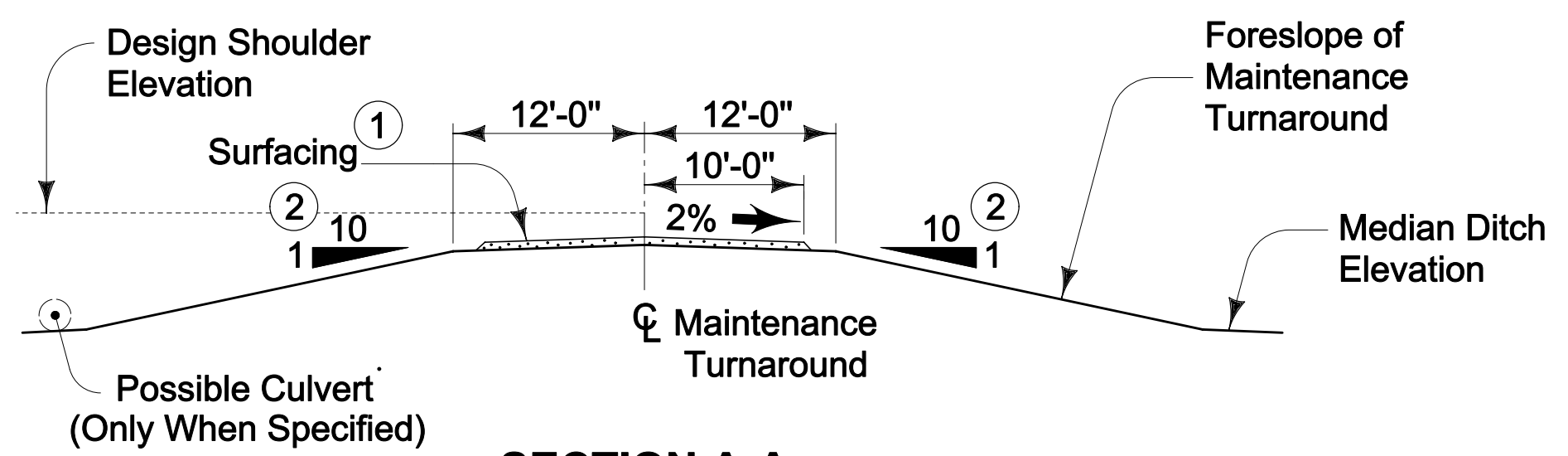


8101
04-20-10

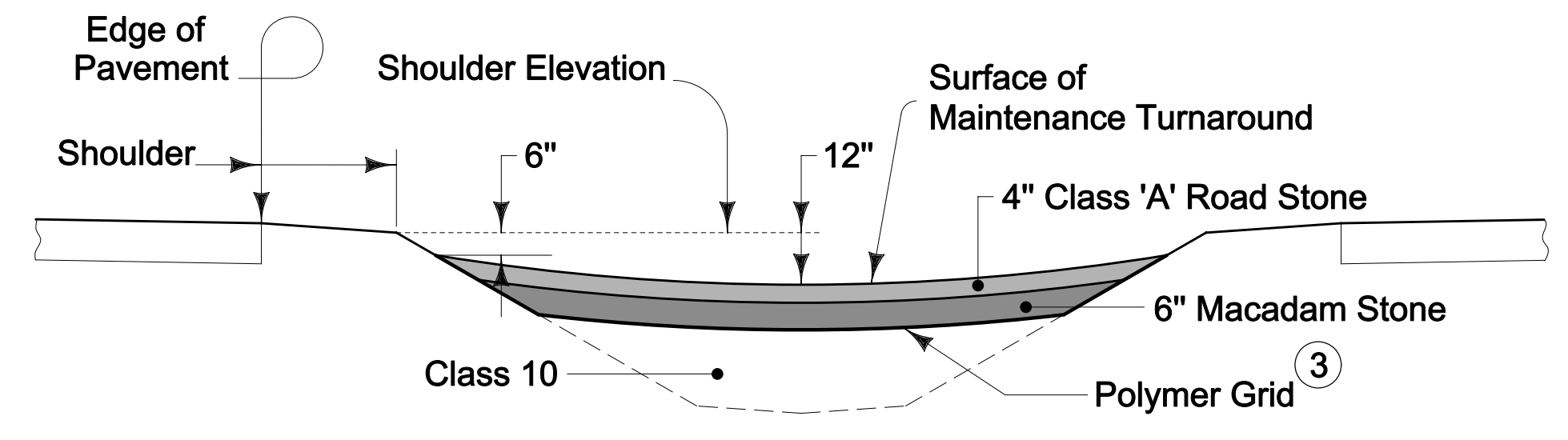


- ① Surfacing quantities based on a 6 inch layer of Macadam Stone base and a 4 inch layer of Class 'A' Road Stone. Apply surfacing as directed by the Engineer.
- ② Construct 8:1 foreslope when drainage pipe is incorporated into the maintenance turnaround.
- ③ Install Polymer Grid between earth fill and stone material.

PLAN



SECTION A-A



SECTION B-B

Location		Macadam Stone Tons	Class 'A' Road Stone Tons	Polymer Grid SY	Class 10 CY
Road Identification	Station				

MAINTENANCE TURNAROUND