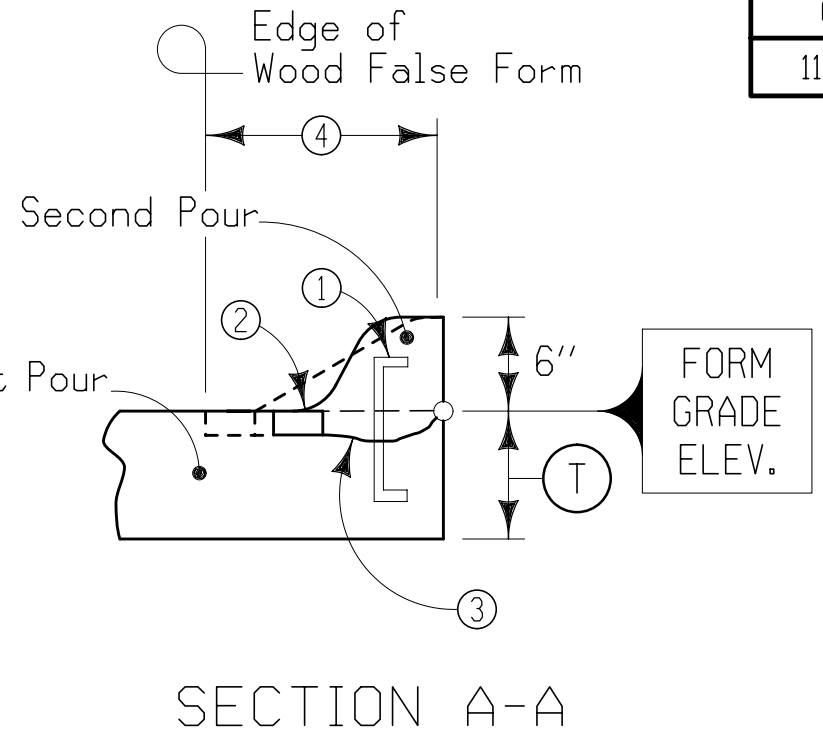


NO. 3
HOOK BAR



SECTION A-A

Notes:

- ① Install hook bar at 12" intervals with top projecting so as to clear the paving equipment and as near the false form board as possible to maintain 2" surface clearance.
- ② 2" x 4" False Form.
- ③ Excavate a slight cavity in concrete around each bar.
- ④ 12" maximum for Standard 6" Curb.
16" maximum for Sloped 6" Curb.

CONSTRUCTION WHERE CURB IS
OMITTED AT END OF DAY'S RUN