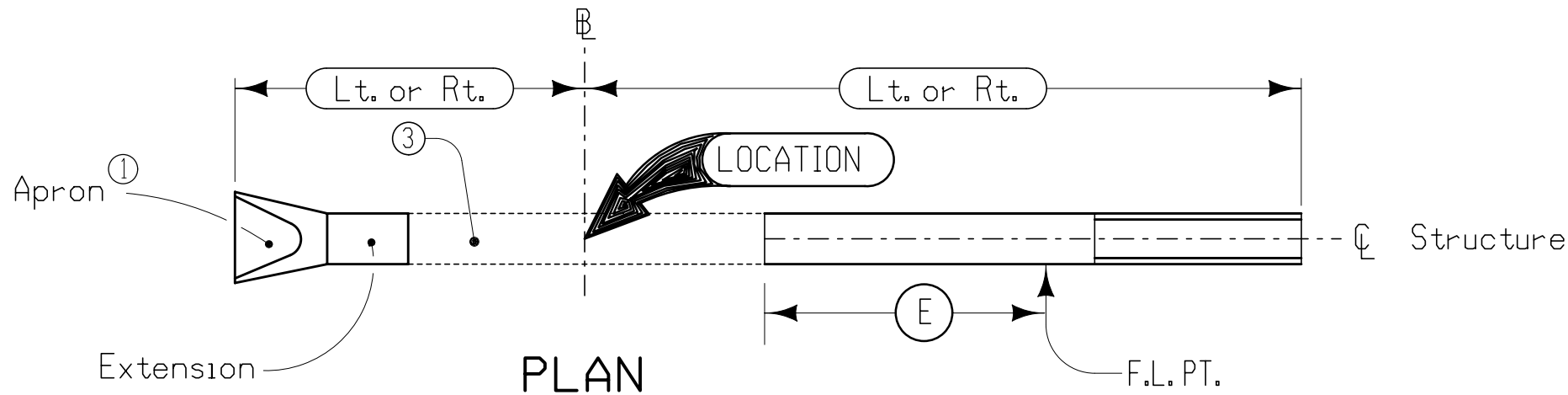


A+C= Length
B= Half Pipe Length



Notes:

B shall be C of roadway, dike survey, or other; as detailed on plans.

Extension shall be on line of existing structure to Lt., Rt. or both as specified. Adaptors may be required, see Standard Road Plan RF-2.

Refer to tabular listing and other plans for additional information.

- ① See Standard Road Plan RF-3 for Concrete or RF-5 for Metal.
- ② Optional Type "D" Section only when specified in Tabulation.
- ③ Existing Structure
- ④ See Standard Road Plan RF-13
- ⑤ See Standard Road Plan RF-14 for pipe connections.

PIPE EXTENSION WITH FLUME