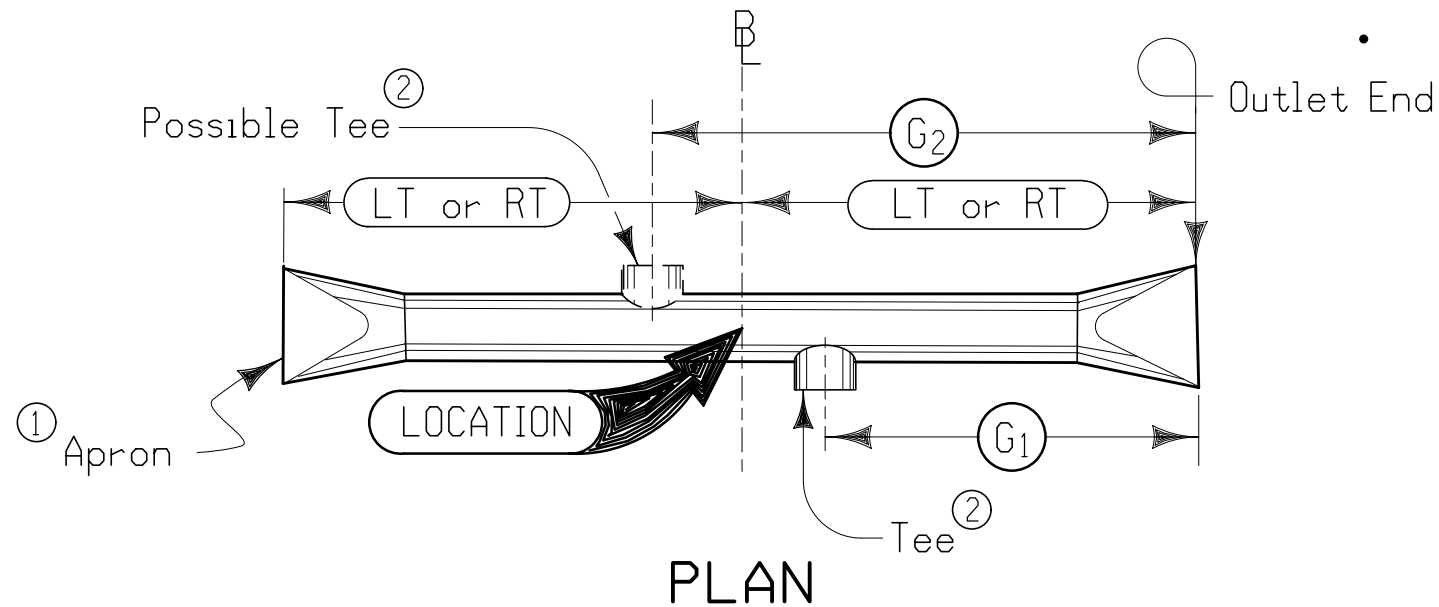


SECTION



PLAN

Notes:

CL shall be CL of roadway, dike, survey, or other; as detailed on the plans.

Skew angle is the angle which one end of the pipe is ahead (by stationing) of a line perpendicular to the CL (example: skew Rt. ahead 30°).

"G" is the dimension to CL of Tee from outlet end of pipe. Either one or two Tees are required as specified.

Refer to Tabular listing and other plans for additional information.

- ① See Standard Road Plan RF-3 for concrete or RF-5 for metal.
- ② See Standard Road Plan RF-21.

PIPE CULVERT WITH TEES