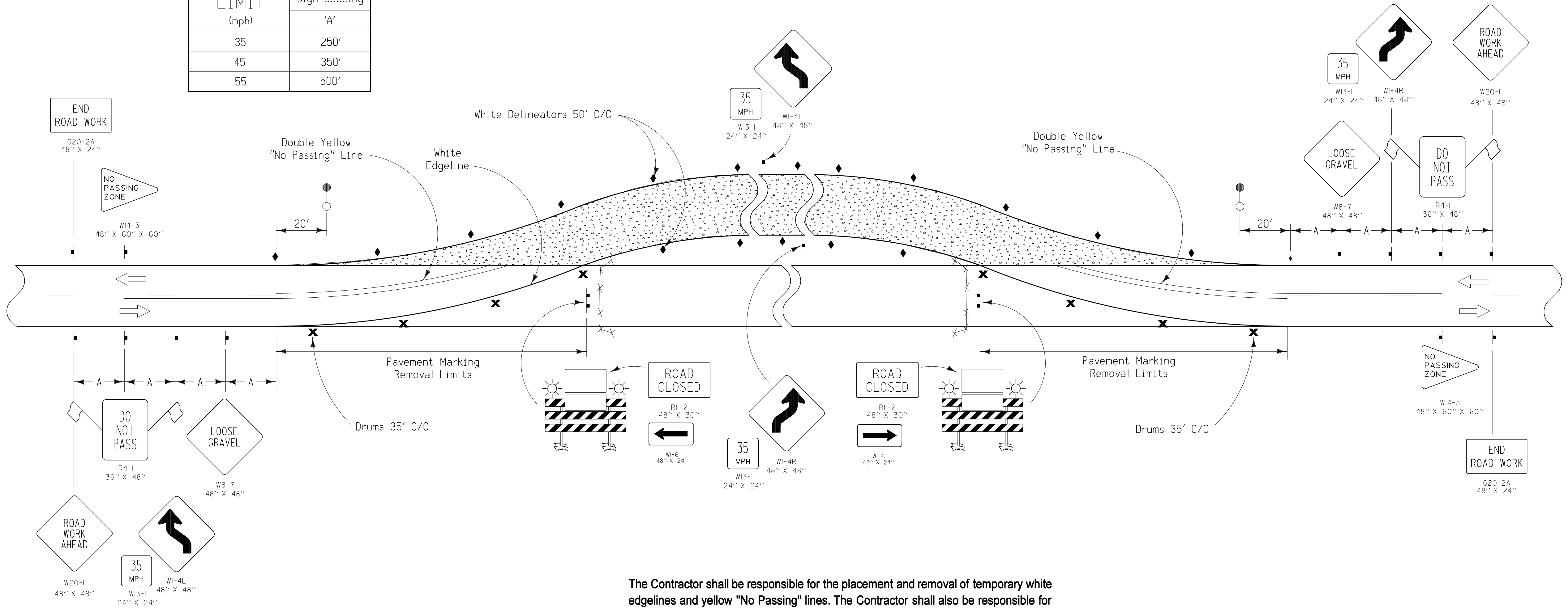


**TWO-LANE ROADWAY**

SPEED LIMIT (mph)	Approximate Sign Spacing
	'A'
35	250'
45	350'
55	500'



The Contractor shall be responsible for the placement and removal of temporary white edgelines and yellow "No Passing" lines. The Contractor shall also be responsible for the removal and replacement of the existing dashed yellow centerline and white edgelines as required by the Traffic Control Layout.

The Engineer may change the advisory speed if deemed appropriate. If reduced below 35 mph, the Reverse Curve signs shall be changed to Reverse Turn signs (W1-3LA or W1-3RA).

**LEGEND**

- ▬ Traffic Sign
- ✕ Drum
- ▬ Type III Barricade
- ⚡ Orange Plastic Safety Fence
- ⬅ Traffic Signal
- ◆ Single White Delineators (mount back to back)
- ⊙ Temporary Floodlighting
- ☀ Type 'A' Low-Intensity Flashing Warning Light
- ☀ Type 'B' High-Intensity Flashing Warning Light

<b>DETAIL SHEET 520-55</b>		
REVISION: Replaced RS-9, as it is rarely used.	REVISION NO. NEW	REVISION DATE 10-17-06

TRAFFIC CONTROL LAYOUT  
FOR UNPAVED ON SITE DETOUR  
WITH TWO-WAY TRAFFIC