

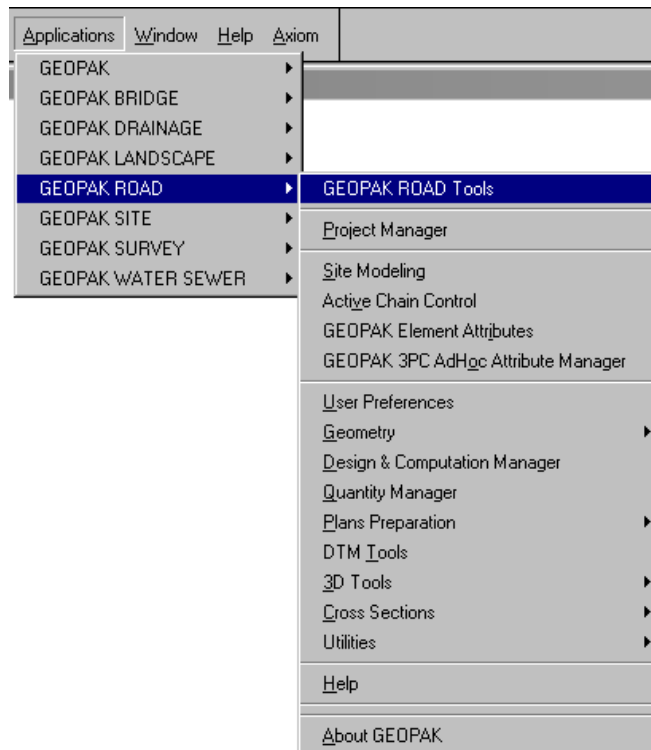
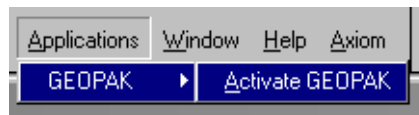
GEOPAK[®] Road User Preferences (Using Project Manager)

Design Manual
Chapter 1
Project Automation

Originally Issued As Section 12B-4: 12-20-99

Revised: 05-23-07

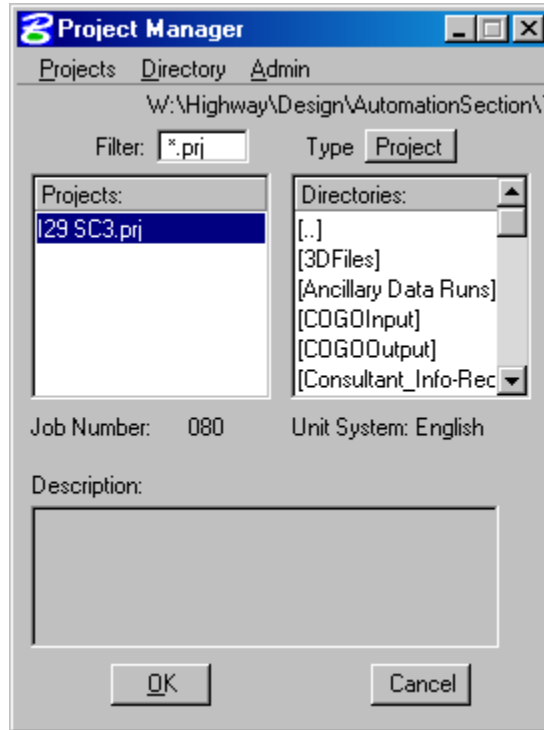
1. To access the **GEOPAK ROAD** toolbox, first activate GEOPAK by clicking **Applications > GEOPAK > Activate GEOPAK** from the MicroStation pull-down menu, then select **Applications > GEOPAK ROAD > GEOPAK ROAD Tools**.



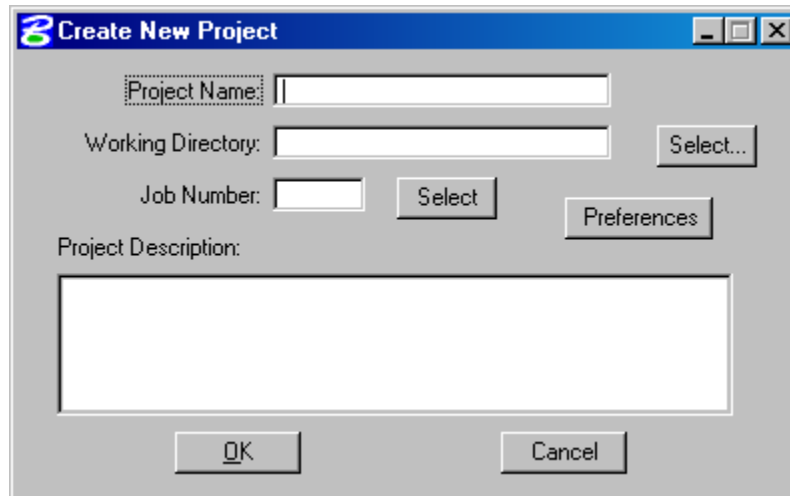
2. From the **GEOPAK ROAD Tools** pallet, select the upper left-hand **Project Manager** button.



3. The Project Manager dialog appears, similar to that shown below.



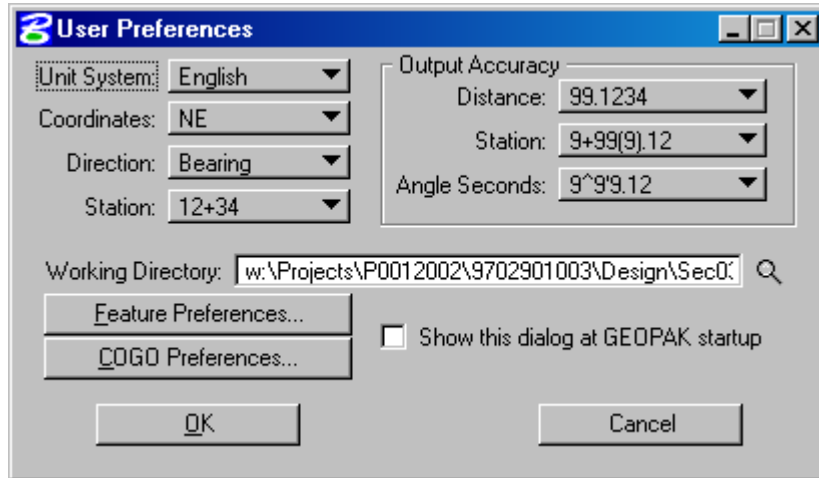
4. Select **Projects > New**, from the dialog above, which opens the **Create New Project** dialog, shown below.



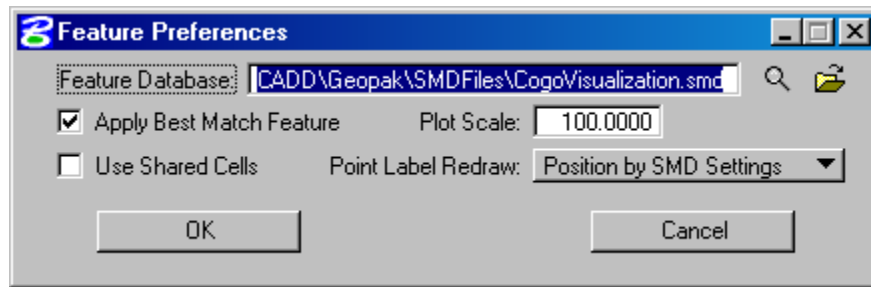
Complete the required information, as described below.

- a. **Project Name:** enter a descriptive project name (such as: 77235430, [ccrrppp format]).
- b. **Working Directory:** the project directory name
- c. **Job Number:** the three-digit route number (034, 520, etc.). If a *.gpk* file has already been created, the **Select** button can be used to select the file. If this is a new project, just enter the route number.
- d. **Project Description:** a short description of the project.

5. Click on the **Preferences** button, shown above, to display the **User Preferences** dialog.



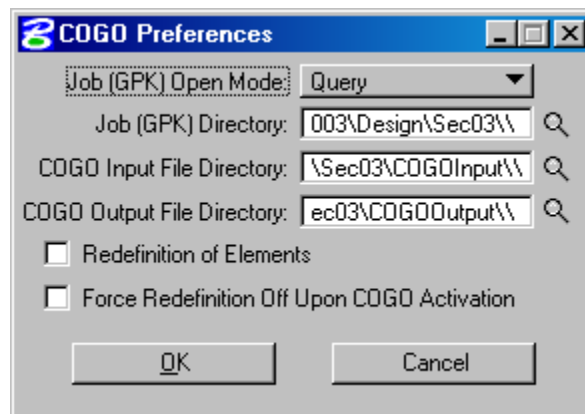
6. The **Feature Preferences** button, shown above in the **User Preferences** dialog, displays the following **Feature Preferences** dialog:



The **Feature Database** field contains the “.smd” settings file to Visualize GOGO Alignments through GOGO Visualization, and is located as follows:

W:\Highway\Design\Cadd\Geopak\SMDFiles\CogoVisualization.smd

7. The **COGO Preferences** button, also shown above in the **User Preferences** dialog, accesses the **COGO Preferences** dialog, shown below.



8. Select the appropriate settings, files, and directories in the above dialogs and the GEOPAK Road project set-up should be complete. For the COGO File directories create a CogoInput and CogoOutput file in the working directory.