

Road Design Details

This section contains information related to modifications and revisions of road design details. Road design details are developed to aid the designer in the development of detailed design plans. The Road Design Details Manual contains current approved road design details. This information may also be accessed through the World Wide Web on the Office of Design’s homepage.

There are four types of road design details: design and tabulation forms, standard notations, design detail sheets, and typicals.

Design and Tabulation Forms

These are numbered between 100 and 199. Many of these forms are used for listing and tabulating quantities of materials required for a project. Others are tables used for listing design or quantity information relevant to a project such as circular curve data or tabulation of utilities. These forms are usually placed on the “C” sheets of a plan. The exception is 107-20, Tabulation of Template Quantities and Adjustments, which is placed in the “T” sheets. Figure 1 demonstrates sample design and tabulation forms.

CIRCULAR CURVE AND SUPERELEVATION DATA										101-10B 10-29-02
NO.	△	D	T	L	E	R	e	L	m	x

sample design form

TABULATION OF EXISTING PAVEMENT									102-5 10-29-02
No.	Location	Existing Pavement (Type)	Coarse Aggregate			Durability Class	Pavement Thickness (Inches)	Reinforcement (Type)	Detail Typical
			Gravel	Crushed Stone	Source				

sample tabulation form

Figure 1: Sample design and tabulation forms.

Standard Notations

These are numbered between 200 and 299. They provide information pertaining to the construction of the project itself and are placed on the “C” sheets of a plan. Figure 2 shows a sample standard notation.

10-27-98 213-4

The contractor shall apply necessary moisture to the construction area and haul roads to prevent the spread of dust. Refer to Article 1107.07 of the current Standard Specifications for additional details.

Figure 2: Sample standard notation.

Design Detail Sheets

These are numbered between 500 and 599. Design detail sheets provide construction details for a specific design situation. Detail sheets are similar to standard road plans, but feature design situations that are less frequently encountered and are more specialized. They are usually placed on the “U” sheets of a plan. Figure 3 demonstrates a design detail sheet.

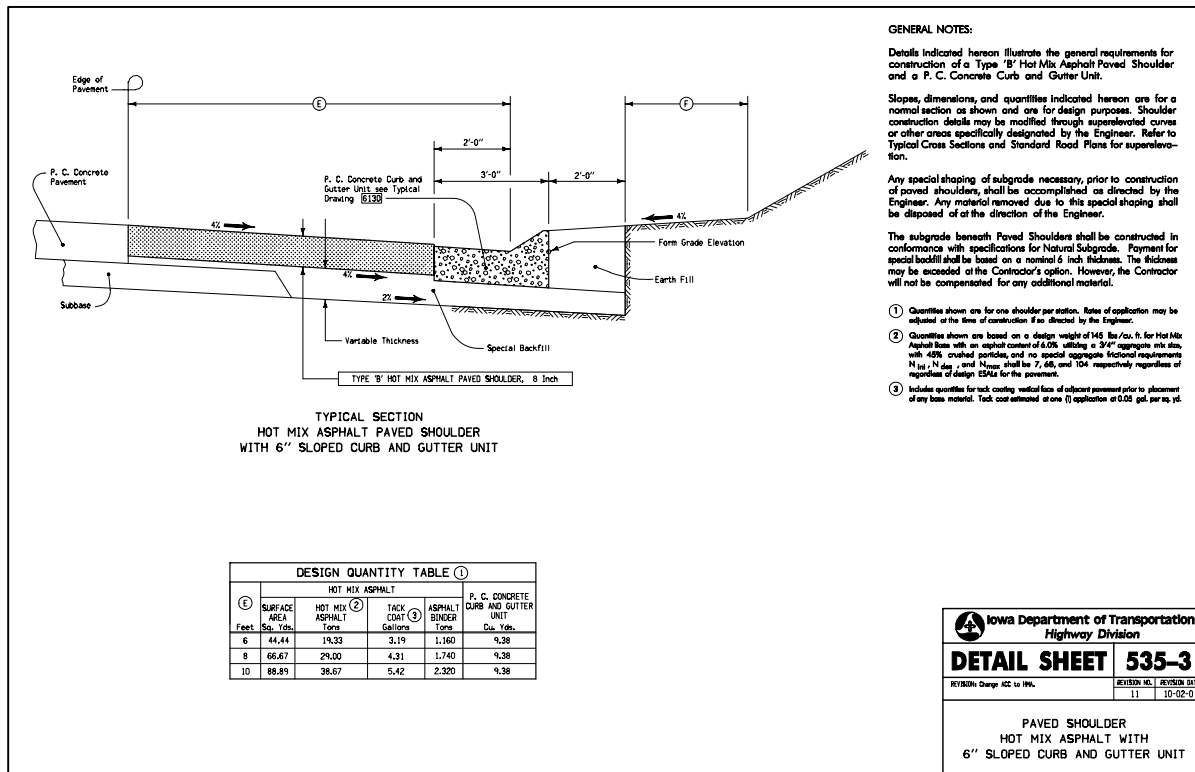


Figure 3: Sample detail sheet.

Typicals

These are numbered between 1000 and 9999. Typical are similar to design detail sheets, but are more focused on a particular design feature. They are placed on the “B” sheets of a plan. Figure 4 shows a sample road design detail typical.

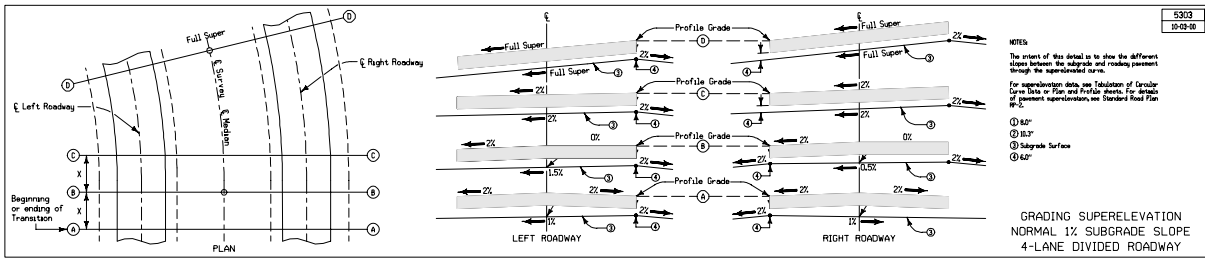


Figure 4: Sample road design detail typical.

Modifications of Road Design Details

Occasionally it is necessary to modify a road design detail. The process is slightly different for each type.

Design and Tabulation Forms

When a design or tabulation form is modified, the date shall be removed and replaced with the word MODIFIED. The box should then appear similar to Figure 5.

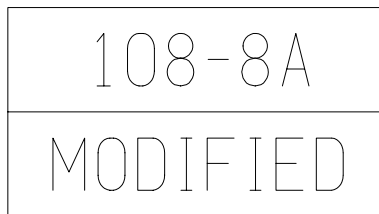


Figure 5: The box in upper right hand corner of modified design or tabulation form should appear similar to above.

Standard Notations

When a standard notation is modified, the number in upper left of the notation and the date in the upper right shall be removed. The note should be renamed allowing reference to the note in the plans.

Design Details

When a design detail is modified, everything in the title block (lower right hand corner of the sheet) is removed except for a description of the detail. The borders should also be removed. The box should then appear similar to Figure 6.

MODIFIED DETAIL SHEET 535-3
PAVED SHOULDER
HOT MIX ASPHALT WITH
6'' SLOPED CURB AND GUTTER UNIT

Figure 6: Box in lower right hand corner of modified design detail should appear similar to above.

Typicals

When a typical is modified, the date shall be removed and replaced with the word MODIFIED. The box should then appear similar to Figure 7.

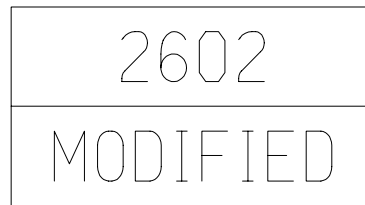


Figure 7: Box in upper right hand corner of modified typical should appear similar to above.

Road Design Detail Revisions

Occasionally it is necessary to revise road design details to incorporate changes in technology, procedures, or specifications. **The changes will be made only by the Methods Section.**