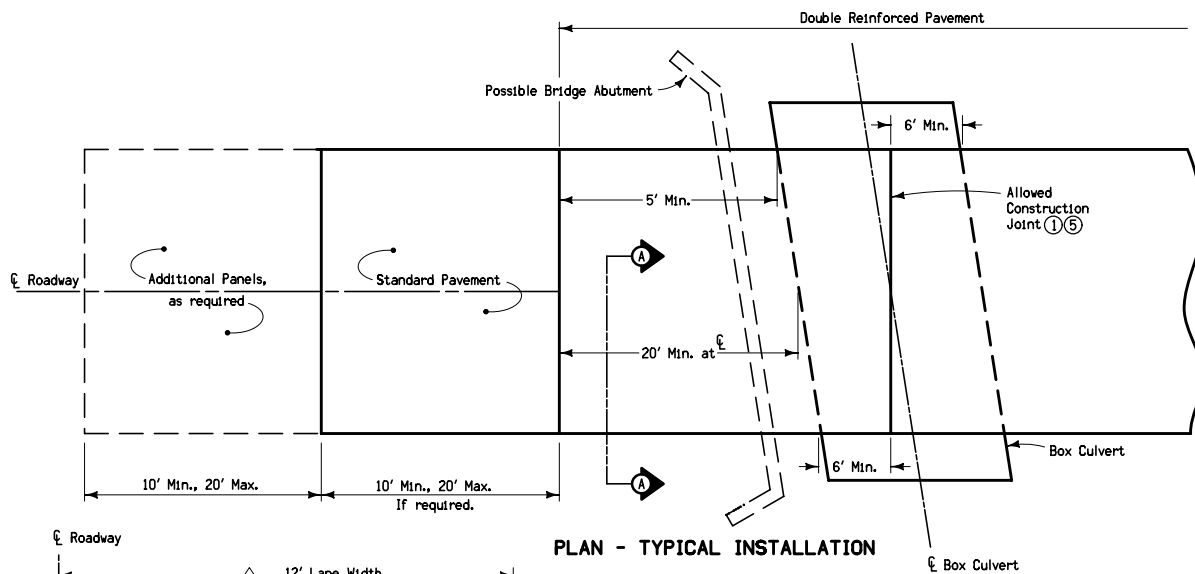
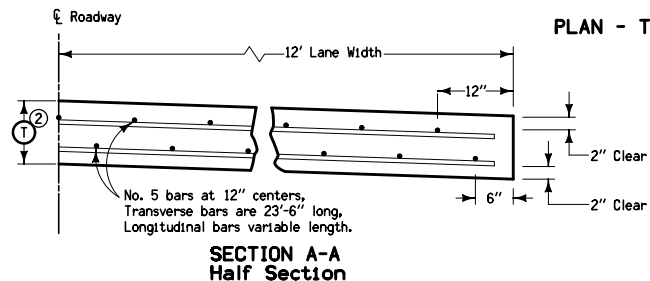


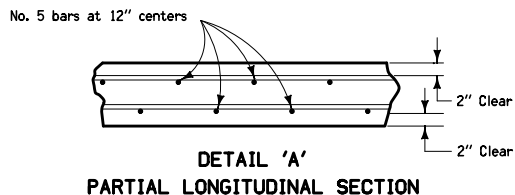
SECTION - TYPICAL INSTALLATION AT CL



PLAN - TYPICAL INSTALLATION



SECTION A-A  
Half Section



DETAIL A'  
PARTIAL LONGITUDINAL SECTION

Price bid for standard pavement of the specified thickness shall be considered full compensation for constructing the pavement as detailed hereon and elsewhere in the plans, including all necessary reinforcement and expansion joints as required on this sheet.

See PV-1 for joint details.

- ① Construction Joints will be allowed if:
  - A. Joint is located at center of culvert.
  - B. Joint is a minimum of 6 feet from edge of culvert.
  - C. Two joints may be used if condition B is met and center panel is a minimum of 15 feet in length.
- ② Refer to typical sections elsewhere in plans for pavement thickness, T. Minimum T=8 inches.
- ③ Existing Pavement Joints:
  - A. When joints are 'C'; use 'B' joint.
  - B. When joints are 'CD'; use 'RD' joint.
  - C. If existing pavement is HMA or Composite (HMA over PCC); use 'B' joint.
- ④ New Pavement Joints:
  - A. When joints are 'C'; use 'B' joint.
  - B. When joints are 'CD'; use 'CD' joint.
- ⑤ Lap all bars 15 inches.
- ⑥ Limits of excavation and type of backfill shall be as shown elsewhere on the plan.

 Iowa Department of Transportation	REVISION
	2 04-20-10
<b>STANDARD ROAD PLAN</b>	<b>RR-23</b>
REVISIONS: Updated references to renamed standards.	SHEET 1 of 1
 APPROVED BY DESIGN METHODS ENGINEER	
<b>DOUBLE REINFORCED PAVEMENT OVER BOX CULVERTS</b>	