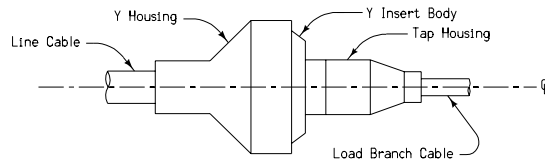
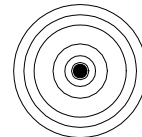


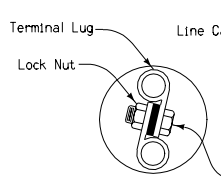
END VIEW
LINE SIDE



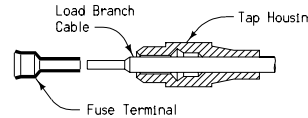
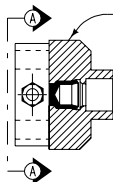
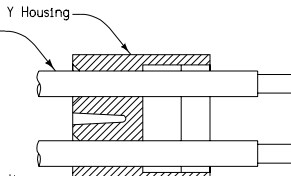
TYPE Y-1 OR Y-2 CONNECTOR ①
ASSEMBLED CONNECTOR



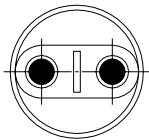
END VIEW
LOAD SIDE



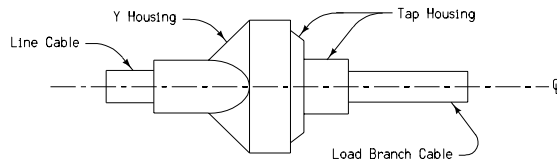
SECTION A-A



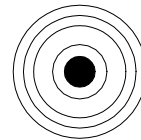
DETAILS OF TYPE Y-1 CONNECTOR
DISASSEMBLED CONNECTOR



END VIEW
LINE SIDE



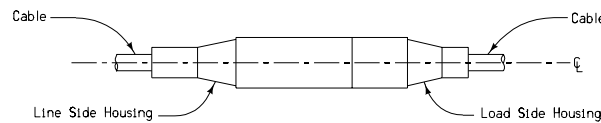
TYPE Y-3 CONNECTOR ①
ASSEMBLED CONNECTOR



END VIEW
TAP SIDE



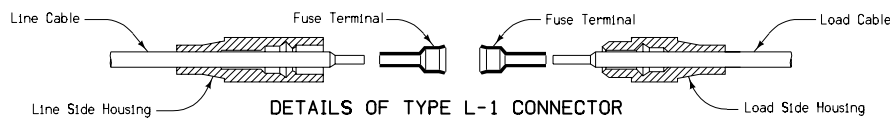
END VIEW
LINE SIDE



TYPE L-1 OR L-2 CONNECTOR ②
ASSEMBLED CONNECTOR



END VIEW
LOAD SIDE



DETAILS OF TYPE L-1 CONNECTOR
DISASSEMBLED CONNECTOR

GENERAL NOTES:

The details indicated hereon are typical for cable splices and connectors. Alternate designs may be submitted to the Engineer for approval.

Materials and methods of construction shall be in accordance with Standard and Supplemental Specifications.

Refer to appropriate Standard Road Plans and project plans for additional details.

All connector assemblies shall be of waterproof construction, designed for both direct burial in the earth and exposure to sunlight, and shall be capable of repeated disconnections without damage to the watertight seals and terminals or reducing the conductivity below specifications. It shall be the responsibility of the Contractor to furnish connectors recommended for the required cable sizes.

Types L-1 and L-2 connectors shall be of the friction type, and shall disconnect without stressing the cable or its attachment beyond recommended limits when axial tension is applied to the cable or housing.

The top housings of Y-1 and Y-2 connectors shall be friction connected to Y insert bodies, and shall meet the disconnecting requirements of L-1 and L-2 connectors.

Lineside terminals of type Y-1 and Y-2 connectors, and all terminals for type Y-3 connectors shall be of the semi-permanent type, and shall be designed not to disconnect under tension.

Where the cable size exceeds the capacity of the L-2 and Y-3 connectors the contractor shall use set screw type splice and tap units with waterproof heat-shrink covering.

Method of measurement and basis of Payment shall be in accordance with Section 2523 of the Standard and Supplemental Specifications.

① Y-1 connectors are fused. Y-2 and Y-3 connectors are unfused.

② L-1 connectors are fused. L-2 connectors are unfused.

Iowa Department of Transportation
Project Development Division

STANDARD ROAD PLAN RM-40

REVISION: Add note.	REVISION NO. 1
APPROVED BY: <i>Jay L. Christy</i> DESIGN METHODS ENGINEER	REVISION DATE 05-24-99
	09-21-99

CABLE SPLICES
AND CONNECTORS